

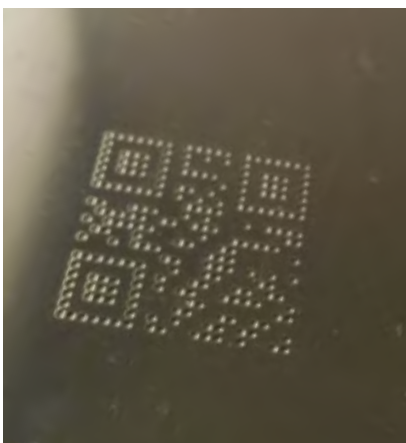
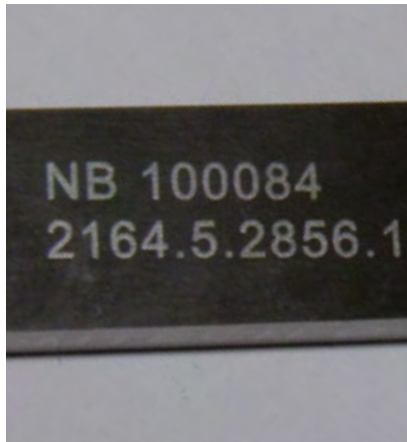
[www.automator.com](http://www.automator.com)

## GENERAL CATALOGUE



Your Global Marking Partner since 1940













# WHY CHOOSE AUTOMATOR?

Since its founding in 1940, AUTOMATOR has been focused exclusively on Industrial Marking Products and Solutions making us the largest manufacturer of marking equipment in the world.

No matter how you want to permanently Identify your product, AUTOMATOR has a solution that will exceed your expectation making a mark that will enhance your part and limit your liabilities.

Our GLOBAL network of partners (not just distributors!) are available in 102 countries serving 100+ business sectors. No matter where you are in this world, we are there to support you and our marking products, birth to death.

**We are your global marking partner since 1940!**



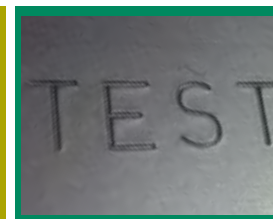
**LASER**



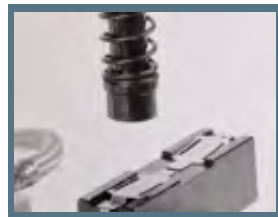
**DOT PEEN**



**ROLL STAMPING**



**IMPACT**



**PRESSES**



**SCRIBE**



**ACCESSORIES**



**CHEM-ETCH**



# LASER

- aWave™ laser marking products
- Get results comparable to much more expensive units
- A wide variety of materials, such as Plastics, Metals, Anodized, Ceramics and much more.



aWave™

**nanoVIS**



**VIS**

Power range 10 - 20 - 30- 40 W

- The most versatile, easy to use and plug-and-play
- In Mark-alone™ mode, no pc is needed
- A COMPLETE SOLUTION IN A SINGLE BOX, NO SEPARATE CONTROLLER!



**GreenVIS**

Power range 3 - 5 - 10 W

**Ask us how to SAVE US\$6300 with the VIS!**



# LASER

## FYBRA™



- In the MarkAlone™ mode, no pc is needed
- Always the right focus with our Automatic FocusFinder™
- Get deeper marking in a variety of environments
- Power range 22 - 33 - 54W



## FocusFinder™

Automatically set focal height between lens and your part



# LASER

MAKE ANY AUTOMATOR LASER A CLASS 1 MARKING STATION

Automator enclosures are elegant in form and function:

**Available for all Automator lasers**

- Automated door and electric Z axis
- Large inspection window, large marking area, small footprint
- T-Slot base for easily mounting fixtures

Options: Rotary Axis, Programmable Z Axis and Automatic FocusFinder™  
A wide range of loading area sizes

## REGINA



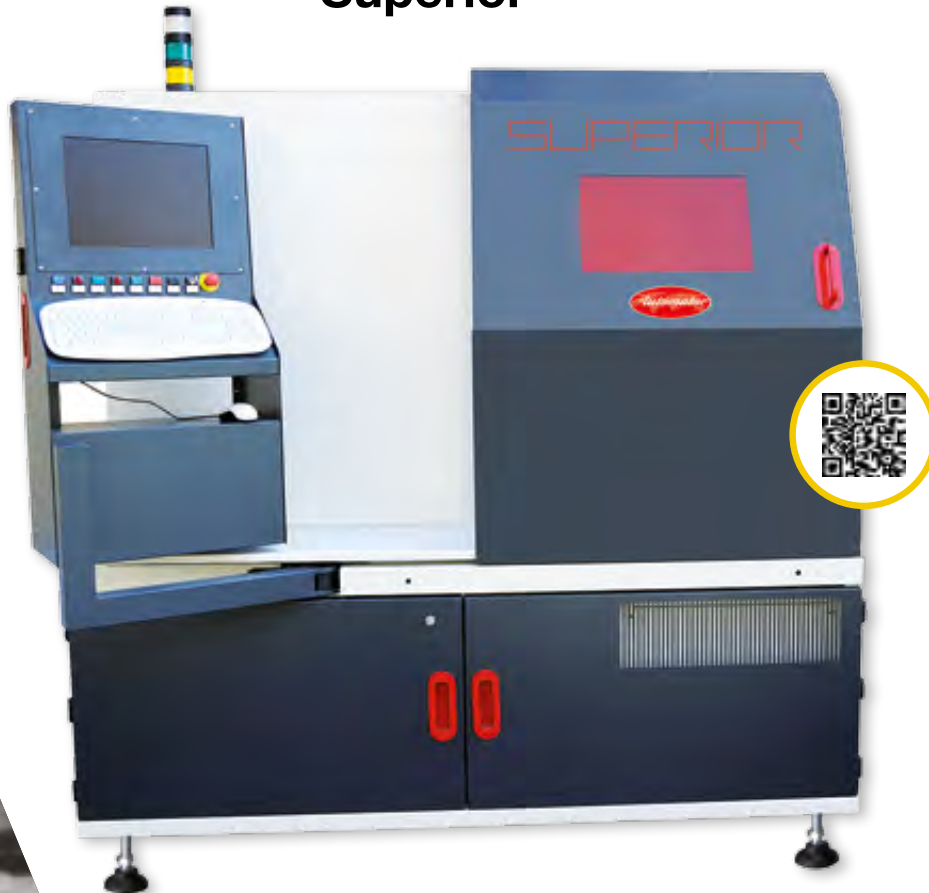
## ARENA



ARENA Workstation

# LASER

## Superior



## Laser Snorkel™

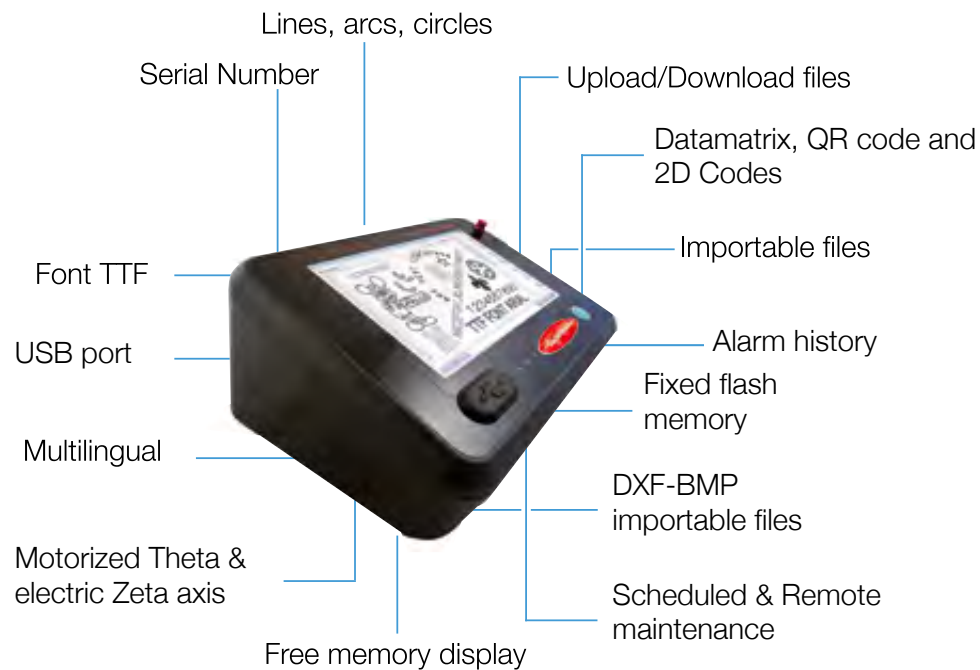


The smallest portable laser in the world

**...and also customized models!**

# AC500

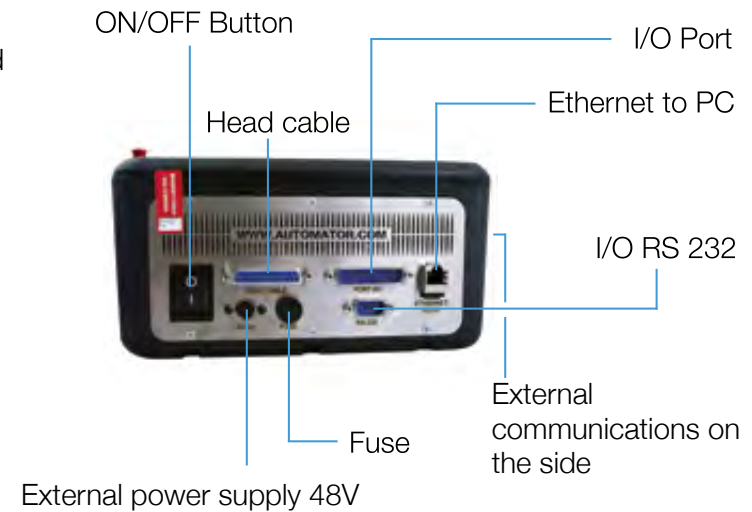
For all models



A 7" touch screen user interface makes the extensive features of the software easy to access. For the first time, marking technology has reached the ultimate in capabilities and intuitive simplicity.



## NEW UNIVERSAL AND FULL OPTIONAL



### External optional communications



(\*) All listed brands are registered and property of thier company



# AC250

For all models



## UNIVERSAL AND AFFORDABLE



USB port

Power supply 48V

Fuse

RS232

Head cable



Ethernet I/O

IEC  
60950-1

CSA C22.2  
60950-1

The AC250 controller can operate as a slave to a local PC or you can download up to eight patterns to the controller's on-board memory and processor to operate without a PC in our proprietary MarkAlone™ method.



## DOT PEEN



WATCH VIDEO NOW!



**ADP120160**

ADP120160DEEP

120 x 160 mm – 4.7 x 6.2 in



**ADP5090**

50 x 90 mm – 1.9 x 3.5 in



**ADP5090P**

ADP120160P

ADP300400P



**ADP300400**

300 x 400 mm - 11.8 x 15.7 in

Marking flexibility:  
logos, drawings, serial numbers, text, arc text, marking preview and  
much more than that.



## DOT PEEN

### ADP Convertible Kit

Use Automator dot peen marker easily in both toolstand and portable mode

**ADP25120P**  
25 x 120 mm

Portable



Portable

**ADP2560P**  
25 x 60 mm



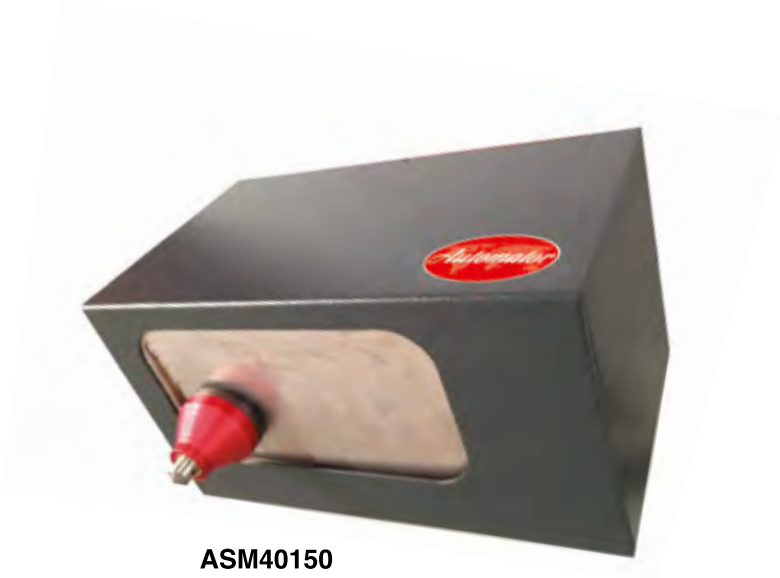
**ADP5090**  
Toolstand mode

**ADP300400**





# SCRIBE



**ASM40150**  
40 x 150 mm – 1.5 x 5.9 in

WATCH VIDEO NOW!



**ASM6090**  
60 x 90 mm - 0.9 x 3.5 in

New small, compact and silent scribe machine  
The best balance quality/price!



# DOT PEEN

## Pins



3 - 6 mm dot



12 mm dot



18 mm dot



3 - 6 mm XL dot



4 mm vibro



3 mm vibro



16 mm scribe



3 mm electric







## ROLL STAMPING

### MB71 UE

Electric unit for integration.

A wide choice of models to mark on the circumferences, without crash, logos, signs and numbers.



### MB41



### MB71 E

Manual, electric and electro-pneumatic versions for marking medium diameters up to 110 mm.



## ROLL STAMPING

Continuous marking on Hexagonal Bars.  
A wide choice of models to mark on circumferences  
with 100 % uptime, ease of use for marking logos or  
numbers



MB71 CE



MB76 EP



Marking diameters up to 600 mm.  
Models available in electric and electric-pneumatic versions.

**...the best solution for round!**



# IMPACT

MB35VP



MB21VP



MB19VPN



Pneumatic impact units with power up to 7500 Kg, ideal for integration.

MB32



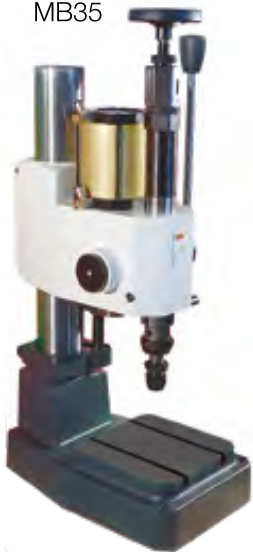
MB20



MB15



MB35



MB21



MB19



Manual impact marking bench machines, with power up to 6500 Kg.

Pneumatic impact bench marking machines, with power up to 7500 Kg.



# PRESSES

MB32S



MB20S



MB15S



MANUAL

Manual and pneumatic presses for pressing, rivetting, bending or stacking.

MB19P



MB21P



MB35P



MB125P



PNEUMATIC

**Easy marking in ONE MOTION!**

## ACCESSORIES



**MB5**  
Numbering head for manual applications.



**MB14**  
Special dies and logos.



**PC**  
Typeholders with 1, 2, 3 lines  
for Automator types.  
Manual and automatic numbering  
heads in different heights and wheels number.



High quality steel types,  
in different heights, available as  
single units or in boxes.



# TRACEABILITY



QR code



Data matrix



Barcode

## MARK, READ, TRACK



Automator is certified CISQ, the consortium for IT Software Quality



Automator Group believes in rational energy use as input in the design of its marking systems



Automator Group believes in rational energy use as input in the design of its marking systems



Automator Group believes that all its machinery must be designed and produced according to the concept of "green philosophy"



Automator is certified ISO 9001 IQ Net

# THE BIGGEST MARKING FAMILY IN THE WORLD

  
**Automator America Inc** - Chillicothe, Ohio, USA  
(740) 983 0157

info.us@automator.com - automator.com/am

  
**Automator Iberomark SI** - La Garriga, Spain  
(+34) 938 717 095

ventas@automator.com - automator.com/es

  
翹慕 **Automator Trading (Shanghai) co. Ltd** - Shanghai, P.R. China  
(+86) 158 0174 3707

info.cn@automator.com - automator.com/cn

  
**Automator India** - Faridabad, India  
(+91) 129 414 2297

info.in@automator.com - automator.com/in

  
**OOO Automator** - Moscow, Russian Federation  
(+7) 495 921 03 09

mail.ru@automator.com - automator.com/ru

  
**Automator Turkey** -  
Istanbul, Turkey

info.tr@automator.com - automator.com/tr

  
**Automator Thailand** - 117/51-52 Moo 18, Klongnueng,  
Klonglung Pathumthani 12120 Thailand  
Jantima Channara -Kae- (+662) 529 5641-2

  
**Automator Mexico** - Santa María Insurgentes, México  
(+55) 6726 3343

info.mx@automator.com - automator.com/es

  
**Traçamatrix** - Graveson, France  
(+33) 490 950 897

info@tracamatrix.com - tracamatrix.com

  
**Stadlers Corp FZC** - Al Qusais, Dubai, UAE 1F, No.7, Alley 23, Lane  
85, Sec. 3, Muzha Rd., Wenshan District, 116, +971 (4) 238 2844  
fax +9714 2382855 info@stadlerscorp.com www.stadlerscorp.com



**Traceability Solutions**, Automator Div.  
Johannesburg, South Africa - (+27) 78 27 382  
info.za@automator.com - automator.com/za

  
**Automator International Srl** - Corsico, Italia  
(+39) 02 48 601 445

marketing@automator.com - automator.com/it

  
**Automator Asia Pacific** - Nunawading Vic., Australia  
(+61) 03 9894 8916

salesap@automator.com - automator.com/aus

  
**Automator CEE s.r.o.** - Prague, Czech Republic  
(+42) 0273132590

info.cz@automator.com - automator.com/cz

  
**Automator Poland** - Swidnica, Poland  
(+48) 695 663 457

info.pl@automator.com - automator.com/pl

  
**Automator d.o.o.** - Lesce, Slovenia  
(+386) 5 90 33 782

info.si@automator.com - automator.com/si

  
**Automator Andina S.A.S** - Medellín-Antioquia, Colombia  
+57 (4) 2359012

info.andina@automator.com - automator.com/an

  
**OOO Automator** - Poltava, Ukraine  
(+38) 0532 59 80 68

info.ua@automator.com - automator.com/ua

  
**Mach Ftd** - Bucharest, Romania  
(+40) 214 609 840

mach@mach.ro - mach.ro

  
**Oy Suomen EDM Ab** - Porvoo, Finland  
(+358) 19 5211400

info.sf@automator.com - automator.com/sf

  
**Toyo Corporation** - Aichi Ken, Japan  
(+81) 566 232 030  
ity1002@toyo-tos.com - toyo-tos.co.jp

  
**Automator Brandone** - Watford, Great Britain  
(+44) 208 863 7141

info.uk@automator.com - automator.com/uk

  
**Automator OOD** - Pazardzhik, Bulgaria  
(+359) 893 558 655

info.bg@automator.com - automator.com/bg

  
**Torvala Maskinkomponenter** - Handen C Sweden  
Tel. (+46) 08 52294600  
info@torvallamaskin.se

  
**Automator s.r.o.** - Stara Tura, Slovakia  
(+421) 915 708 066

info.sk@automator.com - automator.com/sk

  
**Automator Suisse** - Stabio, Switzerland  
(+41) 091 647 15 90

info.ch@automator.com - automator.com/ch

  
**Automator Korea**  
Gyeonggi-do, South Korea  
info.kr@automator.com - automator.com

  
**Automator Iran** - Tehran, Iran  
(+98) 212 2571258  
info.ir@automator.com

  
**Arnold Trading Co. Ltd.** - Industrial Area Holon 58810, Israel  
(+972) 355 813 13  
info@arnold.co.il - arnold.co/il

  
**MF Flues Ind. Com. Ltda** - Sao Paulo, Brazil  
(+55)-11 55 147 400  
flues@flues.com.br - flues.com/br

  
**Smartec Gaging Instruments Co. Ltd** - Wenshan District, taipei 116 Taiwan  
Tel: (+886) 2 2234 4396  
Info.th@automator.com

  
**Novograv** - Weilerbach, Germany  
(+49) 06374 4027  
info.de@automator.com - automator.com



[www.automator.com](http://www.automator.com)