

## Product group – horizontal clamps

### Application areas

Clamping during the assembling, drilling, testing, gluing and locking of covers, and much more. The horizontal clamp is distinguished by the horizontal position of the clamping and retaining arm in the clamping position. Due to its minimum overall height, the horizontal clamp is especially suitable for installation in confined spaces.

### The essential product features

- In the clamping position, the handle is horizontal (minimum overall height)
- Horizontal clamps open in angles ranging from 90° to 105°
- Horizontal clamps are offered with U-shaped clamping arms
- Horizontal clamps have a straight or angular foot

Model 205-U in a drilling fixture



Holding force max. [N]	Length [mm]	Height [mm]	Model no.	Category	Page
250	69,5	17	205-S	Standard	3.3
250	69,5	17	205-S-LS	Standard	3.3
250	68	17	205-U	Standard	3.3
250	68	25	205-UB	Standard	3.4
250	68	25	205-UB-LS	Standard	3.4
250	68	17	205-U-LS	Standard	3.3
650	56,5	35,5	305-U	Compact	3.9
650	56,5	35,5	305-U-LS	Compact	3.9
650	57	37	305-UR	<b>NEW!</b> Compact	3.10

Holding force max. [N]	Length [mm]	Height [mm]	Model no.	Category	Page
700	105	35,5	213-U	Standard	3.5
700	105	44	213-UB	Standard	3.6
700	105	44	213-UB-LS	Standard	3.6
700	105	35,5	213-U-LS	Standard	3.5
900	140,5	37,5	215-U	Standard	3.3
900	140,5	49,5	215-UB	Standard	3.6
900	140,5	49,5	215-UB-LS	Standard	3.4
900	140,5	37,5	215-U-LS	Standard	3.3
900	163	49,5	217-U	Standard	3.5
900	163	62,5	217-UB	Standard	3.6
900	163	62,5	217-UB-LS	Standard	3.6
900	163	49,5	217-U-LS	Standard	3.5
1.500	92	60,5	307-U	Compact	3.9
1.500	92	60,5	307-U-LS	Compact	3.9
1.500	92	62	307-UR	NEW! Compact	3.10
2.200	170	47	225-U	Standard	3.3
2.200	170	59,5	225-UB	Standard	3.4
2.200	170	59,5	225-UB-LS	Standard	3.4
2.200	170	47	225-U-LS	Standard	3.3
2.200	180,5	47	225-UR	Standard	3.7
2.200	180,5	47	225-UR-LS	Standard	3.7
2.200	189	61	227-U	Standard	3.5
2.200	189	75,5	227-UB	Standard	3.6
2.200	189	75,5	227-UB-LS	Standard	3.6
2.200	189	61	227-U-LS	Standard	3.5
3.200	267	65	235-U	Standard	3.3
3.200	267	83	235-UB	Standard	3.4
3.200	267	83	235-UB-LS	Standard	3.4
3.200	267	65	235-U-LS	Standard	3.3
3.400	267,5	63,5	235-UR	Standard	3.7
3.400	267,5	63,5	235-UR-LS	Standard	3.7
3.400	273	81	237-U	Standard	3.5
3.400	273	99	237-UB	Standard	3.6
3.400	273	99	237-UB-LS	Standard	3.6
3.400	273	81	237-U-LS	Standard	3.5
3.400	131,5	90,5	309-U	Compact	3.9
3.400	131,5	90,5	309-U-LS	Compact	3.9
3.400	131,5	91,5	309-UR	NEW! Compact	3.10
4.500	307	108	245-U	Standard	3.5
4.500	307	108	245-U-LS	Standard	3.5
10.700	308,5	98,5	2371-U	NEW! Heavy-duty	3.8
10.700	308,5	98,5	2371-U-LS	NEW! Heavy-duty	3.8

## Standard horizontal clamps

- Clamping arm U-shaped
- Base angular or straight

### Application areas

In all sectors in which clamping work is performed with holding forces of up to 3.200 N.

For example, assembling, drilling, testing, gluing, and other processing operations. Suitable for use in welding fixtures, in gauge manufacture, as well as in all sectors of the timber industry.

### Product features

- Rivets made of stainless steel
- Galvanised and passivated
- Oil-resistant, ergonomically shaped DE-STA-CO plastic handle

### Accessories

Horizontal clamps with a U-shaped clamping arm can be ordered in two variants:

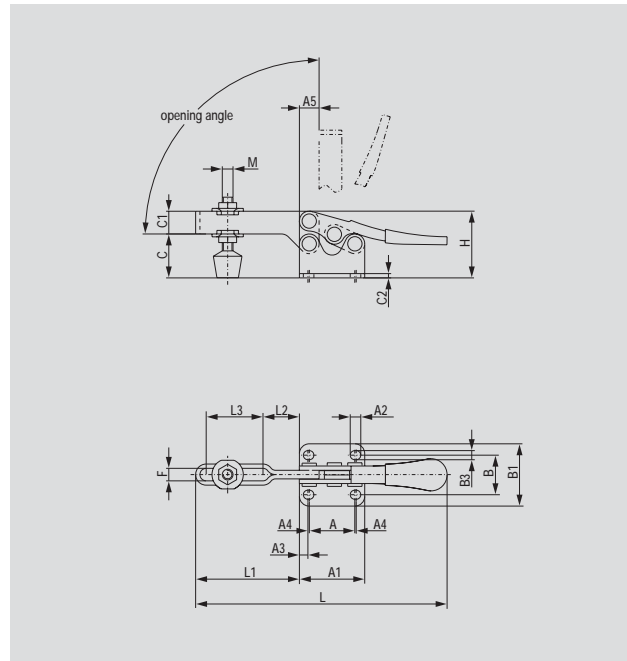
- Standard model number: The matching standard adjustment spindle is included in the scope of delivery
- Model number contains the addition "-LS": The model is delivered with two flange washers without an adjustment spindle.

## Models 205-S, 205-U, 215-U, 225-U, 235-U

Model no.	↓ [N]	Opening- ↙ +10°	⚖️ [kg]	🔩 Standard equipment
205-S	250	90°	0,03	205208-M
205-S-LS				without spindle
205-U	250	90°	0,03	205208-M
205-U-LS				without spindle
215-U	900	90°	0,11	202208-M
215-U-LS				without spindle
225-U	2.200	90°	0,26	225208-M
225-U-LS				without spindle
235-U	3.200	90°	0,66	240208-M
235-U-LS				without spindle

Additional adjustment spindles are listed from page 10.1 onwards

Versions in stainless steel on page 8.5



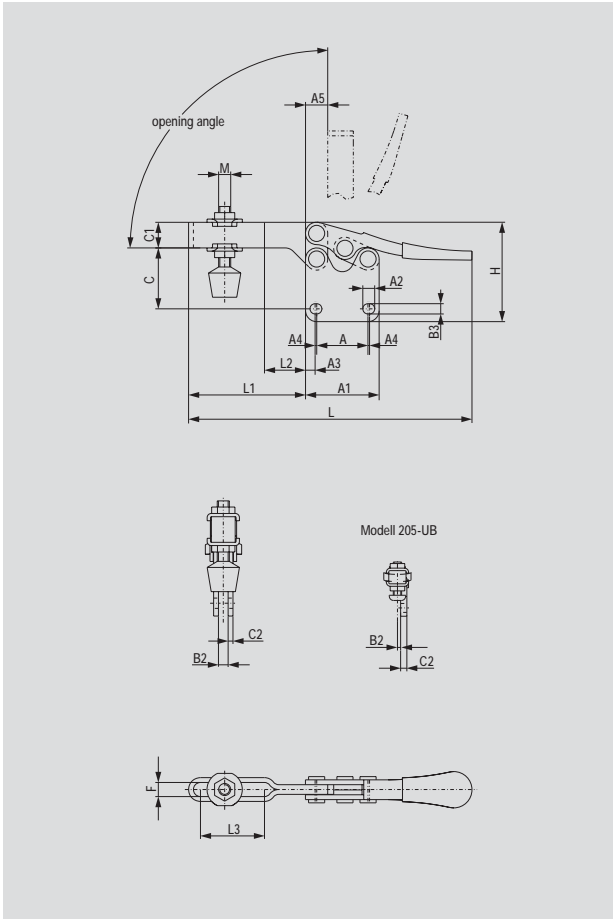
Model 205-U – 235-U



Model 205-S

Model no.	A	A1	A2	A3	A4	A5	B	B1	B3	C	C1	C2	F	H	L	L1	L2	L3	M
205-S	11,2	24	-	4	2,4	7,5	16	23,5	4,3	9,5	3	1,5	4,2	17	69,5	21,5	16,5	-	M4
205-U	11,2	24	-	4	2,4	5,5	16	23,5	4,3	8	6,5	1,5	5	17	68	20	6,5	9,5	M4
215-U	25,4	36,4	-	4,7	0,8	11	22	35	5,2	25	12,5	2,5	7	37,5	140,5	58	20,5	31,5	M6
225-U	25,4	38	6,7	6,3	-	12,5	23,1	35	7,6	34	12,5	3	8	47	170	69,5	27,5	35	M8
235-U	41,2	60	-	9,4	-	17,5	41,2	57	8,7	44,5	19	4	11	65	267	105,5	41	55,5	M10

# Models 205-UB, 215-UB, 225-UB, 235-UB



Model no.	↓ [N]	Opening- ↗ +10°	⚖️ [kg]	🔩 Standard equipment
205-UB	250	90°	0,03	205208-M
205-UB-LS				without spindle
215-UB	900	90°	0,11	202208-M
215-UB-LS				without spindle
225-UB	2.200	90°	0,26	225208-M
225-UB-LS				without spindle
235-UB	3.200	90°	0,66	240208-M
235-UB-LS				without spindle

Additional adjustment spindles are listed from page 10.1 onwards



Model no.	A	A1	A3	A4	A5	B2	B3	C	C1	C2	F	H	L	L1	L2	L3	M				
205-UB	11,2	24	4	2,4	5,5	1,5	4,3	13	6,5	3	5	25	68	20	6,5	9,5	M4				
215-UB	25,4	36,4	4,7	0,8	11	5	5,2	31	12,5	2,5	7	49,5	140,5	58	20,5	32	M6				
225-UB	25,4	38	6,3	-	12,5	-	6,7	40,5	12,5	6	8	59,5	170	69,5	27,5	35	M8				
235-UB	41,2	60	9,4	-	17,5	8	8,7	54,5	19	4	11	83	267	105,5	41	55,5	M10				

## Standard horizontal clamps

- Clamping arm U-shaped
- Foot angular or straight

### Application areas

In all sectors in which clamping work is performed with holding forces of up to 4.500 N.

For example, assembling, drilling, testing, gluing, and other processing operations. Suitable for use in welding fixtures, in gauge manufacture, as well as in all sectors of the timber industry.

### Product features

- Clamping arm adjustable
- Safety clearance between the clamping arm and handle
- Rivets made of stainless steel

- Galvanised and passivated
- Oil-resistant, ergonomically shaped DE-STA-CO plastic handle

### Accessories

Horizontal clamps with a U-shaped clamping arm can be ordered in two variants:

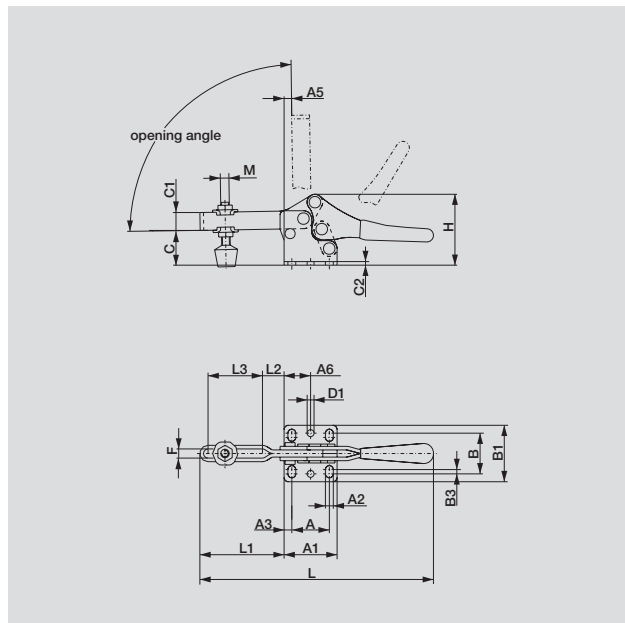
- Standard model number: The matching standard adjustment spindle is included in the scope of delivery
- Model number contains the addition "-LS": The model is delivered with two flange washers without an adjustment spindle.
- Adjusting screw for the clamping arm guide is not included in the scope of delivery

## Models 213-U, 217-U, 227-U, 237-U, 245-U

Model no.	↓ [N]	Opening- +10°	⚖️ [kg]	🔩 Standard equipment
213-U	700	90°	0,07	213208-M
213-U-LS				without spindle
217-U	900	90°	0,18	202208-M
217-U-LS				without spindle
227-U	2.200	90°	0,3	225208-M
227-U-LS				without spindle
237-U	3.400	90°	0,75	240208-M
237-U-LS				without spindle
245-U	4.500	105°	1,4	247208-M
245-U-LS				without spindle

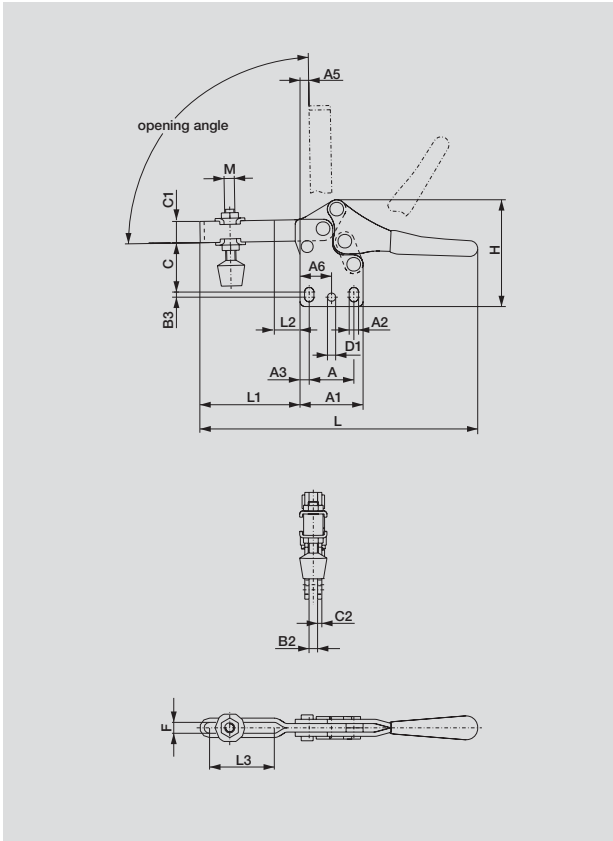
Additional adjustment spindles are listed from page 10.1 onwards

Versions in stainless steel on page 8.5



Model no.	A	A1	A2	A3	A5	A6	B	B1	B3	C	C1	C2	øD1	F	H	L	L1	L2	L3	M
213-U	13,5	25,5	4,3	6	3	-	19	27	1,5	18	9,5	2	-	5,5	35,5	105	36	10	21,5	M5
217-U	26	37	5,5	5,5	5	18,5	28,5	39,5	3	24	12,5	2,5	4,8	6,5	49,5	163	59	15	38	M6
227-U	26	40	6,6	7	0,5	20	31,6	44,5	2,5	33,2	14,3	3	4,8	8,4	61	189	67,5	20	40	M8
237-U	41,2	57	8,8	8	7,5	28,5	43	57	2	45	19	4	5,8	10,5	81	273	104	24,5	70	M10
245-U	41,4	67	8,5	13	-	-	41,5	67	-	58	25,5	4,5	-	13,5	108	307	119	34,5	73,5	M12

# Models 213-UB, 217-UB, 227-UB, 237-UB



Model no.	↓ [N]	Opening- ↙ +10°	⚖️ [kg]	🔩 Standard equipment
213-UB	700	90°	0,07	213208-M
213-UB-LS				without spindle
217-UB	900	90°	0,18	202208-M
217-UB-LS				without spindle
227-UB	2.200	90°	0,3	225208-M
227-UB-LS				without spindle
237-UB	3.400	90°	0,75	240208-M
237-UB-LS				without spindle

Additional adjustment spindles are listed from page 10.1 onwards



Model no.	A	A1	A2	A3	A5	A6	B2	B3	C	C1	C2	øD1	F	H	L	L1	L2	L3	M		
213-UB	13,5	25,5	4,3	6	3	-	4	1	29	9,5	2	-	5,5	44	105	36	10	21,5	M5		
217-UB	26,2	37	5,5	5,5	5	18,5	5	3	34	12,5	2,5	4,8	6,5	62,5	163	59	15	38	M6		
227-UB	26	40	6,6	7	0,5	20	6	2,5	38,6	14,3	3	4,8	8,4	75,5	189	67,5	20	40	M8		
237-UB	41,2	57	8,8	8	7,5	28,5	8	2	55	19	4	5,8	10,5	99	273	104	24,5	70	M10		

## Horizontal clamps with release lever

- Clamping arm U-shaped
- Foot angular or straight

### Application areas

The additional stop holds the clamp in the closed position.

This clamp is preferred for more difficult clamping conditions, e.g. vibrating conditions, transporting of sensitive parts, and where the clamp arm is set at an angle to the base.

### Product features

- Additional locking device for secure clamping
- Rivets made of stainless steel
- Galvanised and passivated
- Oil-resistant, ergonomically shaped DE-STA-CO plastic handle

### Accessories

Horizontal clamps with a U-shaped clamping arm can be ordered in two variants:

- Standard model number: The matching standard adjustment spindle is included in the scope of delivery
- Model number contains the addition "-LS": The model is delivered with two flange washers without an adjustment spindle.

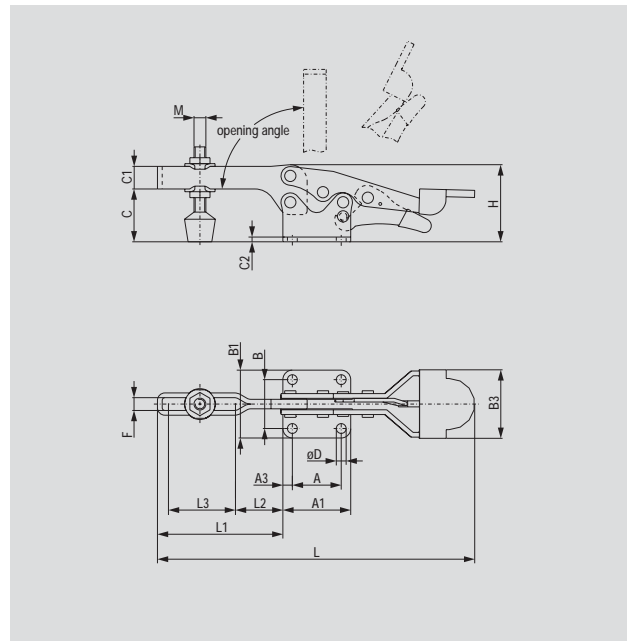
### Safety instructions

In order to guarantee a secure locking, the clamp must be moved to the over-centre position.

## Models 225-UR, 235-UR

Model no.	↓ [N]	Opening- +10°	⚖️ [kg]	🔩 Standard equipment
225-UR	2.200	90°	0,28	225208-M
225-UR-LS				without spindle
235-UR	3.400	90°	0,71	240208-M
235-UR-LS				without spindle

Additional adjustment spindles are listed from page 10.1 onwards



Model no.	A	A1	A3	B	B1	B3	C	C1	C2	øD	F	H	L	L1	L2	L3	M				
225-UR	25,4	38	6,5	22,2	35	40	34	12,5	5,5	6,7	8	47	180,5	69,5	27,5	35	M8				
235-UR	41,2	57	8	41,2	57	57,5	44,5	19	4	8,5	11	65	267,5	105,5	40	56,5	M10				

**NEW**

## Heavy duty horizontal clamps

- Open clamping arm
- Base angular

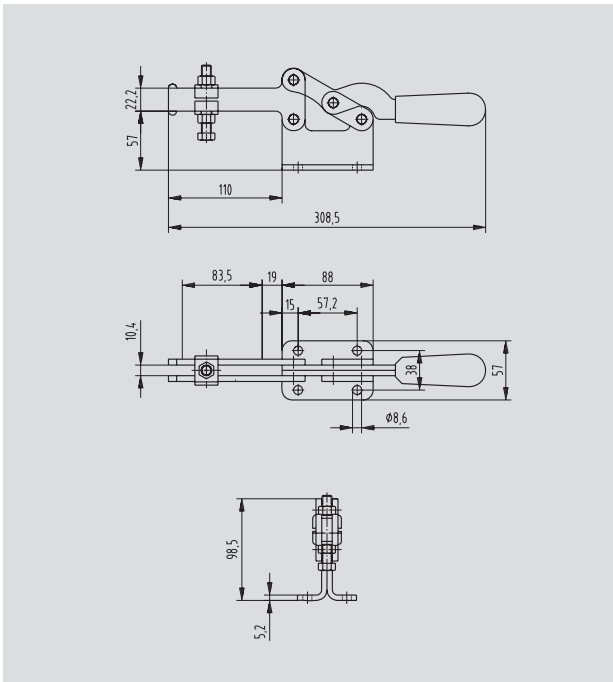
### Application areas

DE-STA-CO's newest hold-down action clamp, Model 2371-U is similar in size and operation to Model 245, but offers 6.200 N more holding capacity. This heavy-duty, open "U" bar clamp comes equipped with ergonomic handles and is furnished with a swivel foot spindle. High holding capacity and high flexibility makes this clamp unique. Suitable especially in welding fixtures and all heavy duty applications.

### Product features

- Zinc plated and passivated
- Rivets made of stainless steel
- Oil-resistant, ergonomically shaped DE-STA-CO plastic handle

## Model 2371-U



Model no.	↓ [N]	Opening- ↗ +10°	⚖️ [kg]	🔧 Standard equipment
2371-U	10.700	90°	1,36	210206-M
2371-U-LS	10.700	90°	1,35	without spindle





## Compact clamps

- Clamping arm U-shaped
- Base angular

### Application areas

This clamp range is distinguished by its very compact design. It is therefore especially suitable for use in very confined space areas.

Application areas include all sectors in which clamping work is performed with holding forces of up to 3,400 N. For example, gluing, soldering, clamping of materials, assembling, drilling, testing, positioning and other processing operations.

### Product features

- Rivets made of stainless steel
- Galvanised and passivated
- Oil-resistant, ergonomically shaped DE-STA-CO plastic handle

### Accessories

Horizontal clamps with a U-shaped clamping arm can be ordered in two variants:

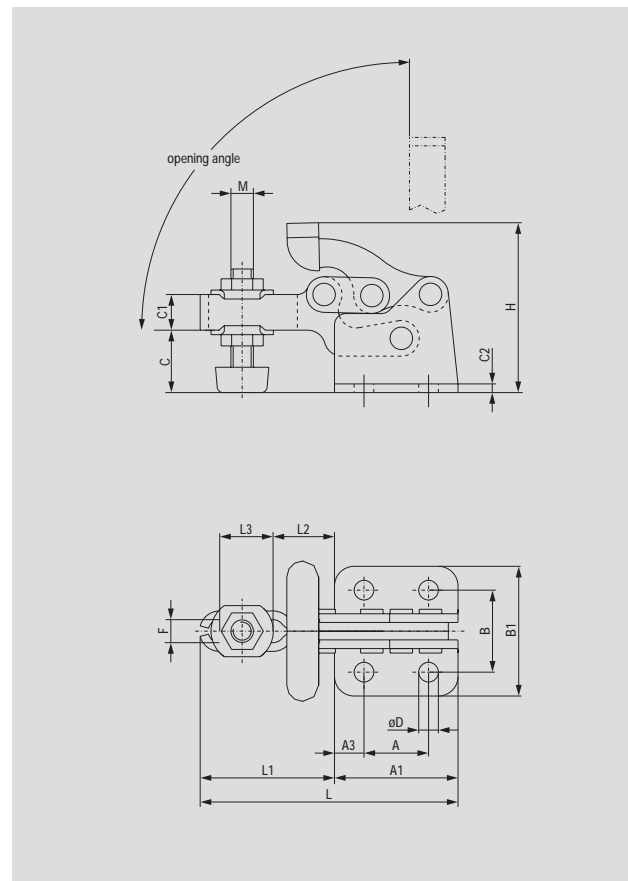
- Standard model number: The matching standard adjustment spindle is included in the scope of delivery
- Model number contains the addition "-LS": The model is delivered with two flange washers without an adjustment spindle.

## Models 305-U, 307-U, 309-U

Model no.	↓ [N]	Opening- +10°	⚖️ [kg]	🔩 Standard equipment
305-U	650	90°	0,06	305208-M
305-U-LS				without spindle
307-U	1.500	90°	0,22	307208-M
307-U-LS				without spindle
309-U	3.400	90°	0,63	3/8"-16
309-U-LS				without spindle

Additional adjustment spindles are listed from page 10.1 onwards

Versions in stainless steel on page 8.6



Model no.	A	A1	A3	B	B1	C	C1	C2	øD	F	H	L	L1	L2	L3	M			
305-U	13,5	26	6,5	16	25,5	12,5	8	2	4,5	5,5	35,5	56,5	30,5	13,5	12,5	M5			
307-U	23	44	10,5	29,4	46	22	12,5	3	7	8	60,5	92	48	22	19	M8			
309-U	35	64	14,5	38	63	33,5	19	3	8,5	10,5	90,5	131,5	67,5	31,5	27	M3/8-16			

**NEW**

## Compact clamps with release lever

- Clamping arm U-shaped
- Base angular

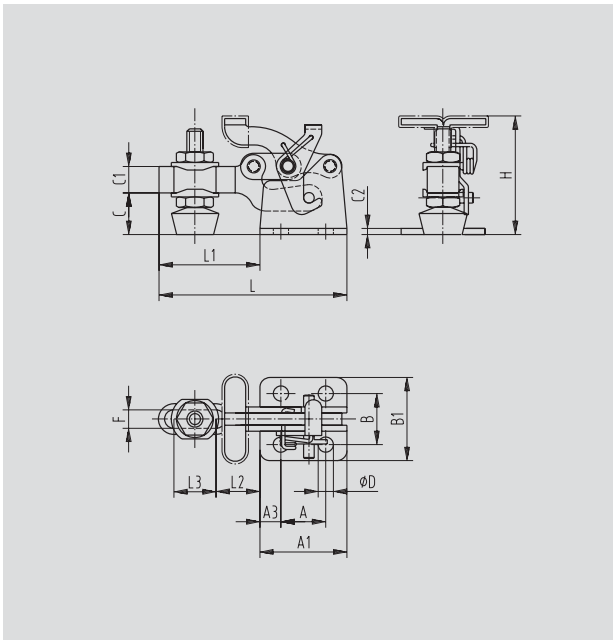
### Application areas

DE-STA-CO introduces our newest family of Toggle-Lock Plus clamps. Featuring a compact locking release lever, which locks in the clamped position only. All models provided with red vinyl handle grip and flanged washers. Models 305-UR, 307-UR and 309-UR are supplied with neoprene-tipped spindle assemblies.

### Product features

- Rivets made of stainless steel
- Zinc plated and passivated
- Oil-resistant, ergonomically shaped DE-STA-CO plastic handle

## Models 305-UR, 307-UR, 309-UR



Model no.	↓ [N]	Opening- ↗ +10°	⚖️ [kg]	🔩 Standard equipment
305-UR	650	92°	0,06	305208-M
307-UR	1.500	92°	0,25	307208-M
309-UR	3.400	88°	0,6	3/8"-16

Additional adjustment spindles are listed from page 10.1 onwards



Model no.	A	A1	A3	B	B1	C	C1	C2	øD	F	H	L	L1	L2	L3					
305-UR	13,5	26	6,5	16	25,5	12,7	8	2	4,3	5,5	37	57	31	13,5	12,5					
307-UR	23,1	44	10,5	29,5	46	22,5	12,5	3	7	8	62	92	48	22	19					
309-UR	35	64	14,5	38,1	63	33	19	3	8,3	10,5	91,5	131,5	67,5	31,5	27					