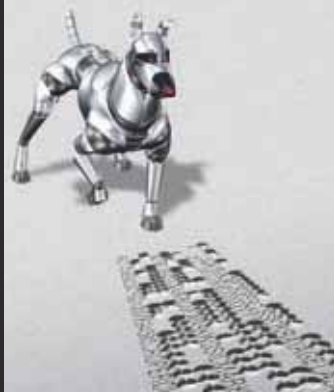




Integrated systems

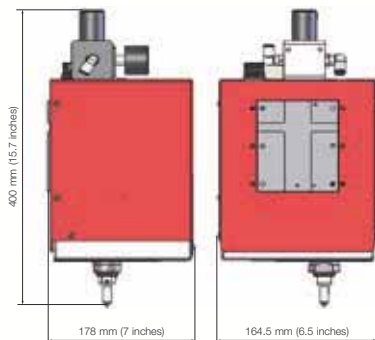
Scribing marking heads



e8 RANGE
e8-i61s
e8-i111s



e8-i61s



e8-i111s



Low cost of ownership:

- No consumables
- No maintenance required

Robust and reliable:

- Fully enclosed system
- Protection bellows
- Designed for heavy use in industrial environments

Wide range of options

High performance:

- High marking quality (carbide or diamond stylus)
- Marking depth
- High speed
- Powerful integrated software

Simple and user-friendly:

- Extremely quiet
- Straightforward integration
- Removable robotic cable
- Simple programming

MECHANICAL TECHNICAL FEATURES

| | i61s | i111s |
|----------------|---|--------------------------------|
| Marking window | 60 x 30 mm / 2.4 x 1.7 inches | 110 x 60 mm / 4.3 x 2.4 inches |
| Weight | 11.8 Kg / 26 lb | 17 Kg / 37.5 lb |
| Robotic cable | 5 m / 196.8 inches (option 10 m / 393.7 inches and 15 m / 590.5 inches) | |
| Stylus | Carbide or diamond tip 60 mm / 2.36 inches | |
| Air supply | 6 bars | 6 bars |

OPTIONS



Column



Rotary axis (for light marking)



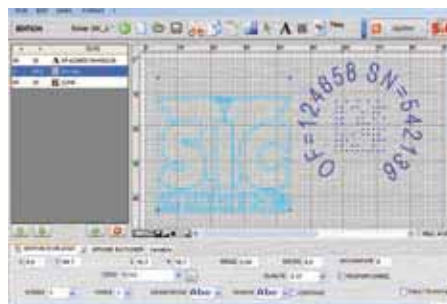
Deep marking



Stylus and guides



Maintenance kit



PC-based software



e8



e8c

- Fully programmable
- Angular and circular marking
- Historical and auto diagnostic functions (maintenance help, configuration and statistics)
- Standalone operation (no PC required)
- Industrial membrane keyboard
- Fully enclosed controller (IP40)
- Large graphical screen

ELECTRONIC TECHNICAL FEATURES

| | e8 | e8c |
|---------------------------|--|---|
| Dimensions (d x l x h) | 322 x 413 x 112 mm / 12.7 x 16.2 x 4.4 inches | 223 x 413 x 112 mm / 8.8 x 16.2 x 4.4 inches |
| Weight | 5.4 Kg / 11.9 lb | 4.9 Kg / 10.8 lb |
| LCD screen | 115 x 65 mm / 4.5 x 2.5 inches | - |
| Keyboard | Qwerty integrated, membrane overlay | - |
| Power | | 300 Watt |
| Power supply | Single phase, 85 to 260 VAC, 50 to 60 Hz | |
| Number of controlled axis | 2 (3rd and 4th axis optional) | |
| Operating temperature | From 5 to 40°C / 40 to 105°F | |

Software

| | |
|-------------------------|---|
| Marking files | Up to 2000 |
| Memory | 512 Ko |
| Alphanumeric characters | Serial number, date coding |
| Logos | Download from PC |
| Fonts | Arial, Courier, OCR, OCRA (custom fonts optional) |
| Style | Angular, radial, inverse, mirror |
| Speed | Up to 5 characters/sec. |
| Character size | From 0.1 mm / 0.004 inches to 99 mm / 4 inches (restricted by marking window size) |
| Impact force | 9 adjustable levels |
| Depth | Up to 0.5 mm / 0.02 inches on metals (depending on material marked) |
| Resolution between dots | 0.05 mm / 0.002 inches |
| Maximum stylus stroke | Up to 8 mm / 0.32 inches |
| Work shift management | 10 shifts |
| Password protection | 3 security levels |
| Historical function | Available by password |
| Maintenance assistance | Auto diagnostic component |
| Software | 15 languages |

Communications

| | |
|-------------------------|--|
| Ports | RS232, RS422, USB (RS485 and TCP/IP Ethernet optional) |
| Inputs/Outputs | 16 |
| External keyboard input | MINI DIN |
| External output | 5 V - 0.5 A and 24 V - 0.5 A |
| Logos | Logo creation and transfer software |
| File backup on PC | Controller/PC transfer software |
| Database link | Optional |

SIC Marking® ACTIVITIES

PERMANENT MARKING



CONVENTIONAL MARKING



DOT PEEN



SCRIBING



LASER

INDUSTRIAL VISION



INDUSTRIAL VISION

TURNKEY SOLUTIONS



TURNKEY SOLUTIONS



SIC Marking® equipment is available worldwide. Contact us to be directed towards a distributor serving your area.



SIC Marking®

13, route de Limonest
Zac de la Braille
69380 Lissieu - France
Tel.: +33 (0)4 72 54 80 00
Fax: +33 (0)4 78 47 39 40
www.sic-marking.com
info@sic-marking.com

