

The VEI logo consists of the letters 'VEI' in a white, serif font, positioned above a thick white horizontal line. The entire logo is set against a solid blue square background.

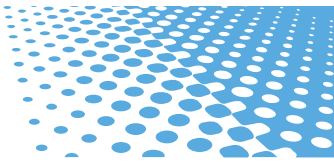
# VEI

The helperXE logo features the word 'helper' in a grey, lowercase sans-serif font, followed by 'XE' in a blue, stylized font where the 'X' and 'E' are connected.

helperXE



**EXCAVATOR ONBOARD WEIGHING  
TECHNOLOGY CONCEIVED FOR YOU**



# A NEW GENERATION OF POWERFUL YET SIMPLE TO USE ONBOARD WEIGHING SOLUTION

THE INSTALLATION OF ACCURATE AND EASY-TO-VIEW ONBOARD WEIGHING SOLUTIONS AND PAYLOAD MONITORING ENABLE FLEET OPERATORS TO CONTROL LOADS MOVED, DRIVING DOWN HAULAGE COSTS AND IMPROVING PRODUCTIVITY

The excavator machine works in remote areas where truck scales are far away and therefore the accuracy of the loads into the trucks has a prime importance, together with the data management sent for invoicing or production assessments directly from the Excavator machines.

With **helperXE** installed onboard you are sure that each bucket is weighed, the load is within the allowed limits, the production is under control, the moved quantity is transmitted remotely for mining haulage analysis and stock inventory.

**helperXE** has been created following VEI twenty years experience on excavator application, the first in 1998. The arms, the bucket and the excavator inclination are controlled by inclination sensors without mechanical moving parts between the arms which can be easily damaged and have a certain wear and tear.

With **VEI** sensors the installation and setup are easy and fast because they can be installed in any arm's position without constrictions.

Try to imagine, instead, if you have to install a sensor directly on the arm's pivot pin, making sure it is not axially offset and a lever on the adjacent arm that has to make the sensor rotate accordingly while moving, the whole not built by the excavator manufacturer; the **VEI** sensors advantages are evident.

The Software, heart of the **helperXE**, allows to follow in real time the position of each part and process the weight result in a deterministic and precise way, due to the many settings possibility for controlling different working situations.

**helperXE** manages your load flow for the best production control and sales invoicing.

**helperXE** feature a bright colour display that is unequalled elsewhere in the industry. Visibility in direct sunlight is assured.

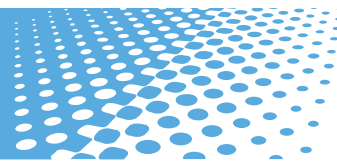
**helperXE** takes into consideration incabin space, ergonomics, visibility, ease of use and connectivity, while reducing the amount of componentry. In-cab space is optimised by the innovative design and applied electronics, which have permitted the building of a unique small Device incorporating the printer, when necessary, continuing **VEI** versatility of the integration as always been in the past.

With a worldwide trained network of companies, **VEI** promises a high level of service and technical backup.

**helperXE** manages your load flow for the best production control and sales invoicing, with a ROI of few months.







## WHY INSTALL HELPERXE?

- High precision
- Minimum components with no junction boxes
- Avoid overload fines by loading right in the first place
- Reduce haulage cost avoiding underload
- Reduce cycle times at the weighing bridge
- Weigh bridges and associated running costs can be eliminated
- Track loading efficiency
- USB data transfer at no extra cost
- Help stock and sales tracking
- End-to-end management of the payload process, with print out of the delivery tickets and data sent to billing system in real time using wireless cellular technology
- Real time, web-based consultation of loading and production data from any work station, tablet or smart phone
- Easy-to-use thanks to the intuitive commands and guided data entry user interface made possible by the VEI innovative Operating System
- High-speed thermal printing
- The production plant can be loaded then suspended temporarily to load trucks. The system can manage simultaneous loading tasks (multitasking)
- Operator ID login with autolocking if not authorized
- Multiple weighing modes: Incremental, Target, Vehicle and Recipe
- Worldwide factory trained support backup
- 3 years warranty, best in the industry

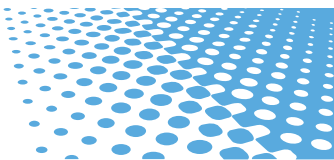


## HARDWARE CHARACTERISTICS

Power supply	9÷36Vdc
Working temperature	-40°C ÷ +80°C
Metrological accreditation working temperature	-25°C +60°C
Measurement error (%)	0 ± 2
Shocks	40G tested
Protection class	Device IP 54. Sensors IP67
Size	140 x 204 x 67mm. (5,5 x 8 x 2,6 inches)
Weight	928 gr (2 lb)
Display	HD color TFT
Light ambient sensor	day/night automatic display brightness
Keyboard	Membrane, lighted
Text editing	Mobile phone type
Modem port	RS232
Printer port	RS232
Canbus port	Canopen
USB port	USB read/write
Remote keys	Open contact

## SOFTWARE FEATURES

Auto-add
Tip off
Diverse tool's calibrations
Unit of mass conversion
Auto-power on
Auto-shutdown
Energy saving
Plant and trucks simultaneous loading
USB files backup/restore
USB software update
USB/wireless data update
Operator ID login
Split weighing



# DELIVERY TICKET PRINTOUTS AND PRODUCTION REPORT






## VPRINT

Thermal high speed printing, indestructible when compared to the needle printer which are very much sensitive to dust and mechanical breakdown. It can be fitted under the **helperXE** to produce a single, integrated unit or installed as a separate unit. The integration makes it the most compact unit in the market, easy to install and operative directly under the Device without having to move away from it.



**vprint**

## PRINTOUTS AVAILABLE:

				
Truck load	Truck load history	Production by favorite elapse dates	Management data	Configuration data

## PRINTED INFORMATION INCLUDES:

- A** Site Owner company with address
- B** Loading site with address
- C** Loading company with address
- D** Date and Time of printout
- E** Loaded Product
- F** Loaded Weight
- G** Vehicle ID with preset target
- H** Number of Weighings
- I** Multiple Products loading
- J** Products overall Total
- K** Recipe Name
- L** Recipe Products loaded
- M** Customer Name with address
- N** Machine code
- O** Destination Name with address
- P** Carrier
- Q** Loading Operator ID
- R** Ticket number
- S** Signature box
- T** Footer

**A**

PORTLAND QUARRY  
13 PEEK ROAD  
ROSKANK CITY  
OR

**B**

LOADING SITE  
CREEK VALLEY QUARRY

**C**

LOADING COMPANY  
SMITH CONTRACTING AND CO.

**D** 04/02/2016 16:04

PRODUCT	WEIGHT (t)
<b>E</b> ROCKS	23,45
<b>G</b> Vehicle AC 455 RTS	23,60
NO. OF WEIGHINGS	5

**H**

PORTLAND QUARRY  
13 PEEK ROAD  
ROSKANK CITY  
OR

LOADING SITE  
CREEK VALLEY QUARRY

LOADING COMPANY  
SMITH CONTRACTING AND CO.

11/02/2016 14:50

PRODUCT	WEIGHT (t)
SAND	21,45
GRAVEL	15,20
ROCKS	45,45
<b>J</b> TOTAL LOADED	82,10 t
NO. OF WEIGHINGS	13

PORTLAND QUARRY  
13 PEEK ROAD  
ROSKANK CITY  
OR

LOADING SITE  
CREEK VALLEY QUARRY

LOADING COMPANY  
SMITH CONTRACTING AND CO.

10/02/2016 11:15

RECIPE  
**K** MAIN CRUSHER

PRODUCT	WEIGHT (t)
GRAVEL	145,00
Target	145,00
ROCKS	110,00
Target	110,00
LIMESTONE	135,00
Target	135,00
<b>L</b> TOTAL LOADED	390,00 t
NO. OF WEIGHINGS	70

CUSTOMER  
**M** PHILLIPS CONSTRUCTIONS

MACHINE CODE  
HITACHI ZAXIS 350LCN

DESTINATION  
**N** WELLINGTON WAREHOUSE

20045 PINETREE  
LIVERPOOL  
OR 50073

CARRIER  
**O** SOUTHEAST EXPRESS INC.

54 WELLINGTON ST.  
STOCKPORT  
SK1 1PD

OPERATOR ID  
**P** DAVID

Ticket number  
**Q** 11

SIGNATURE  
**R**

QUALITY PRODUCTS  
SINCE 1983  
**T**

WEIGHTS LOG FILE  
TOTALS

15/02/2016 11:00

START OF WEIGHING 15/02/2016 09:13  
END OF WEIGHING 15/02/2016 09:20

PRODUCT	WEIGHT (t)
SAND	23,45

NO. OF WEIGHINGS 5  
NO. OF TICKET 1703  
OPERATOR ID DAVID  
CUSTOMER RICHARDSON PLANT LTD  
DESTINATION PALM TREE DRIVE

LOADING SITE  
PORTLAND QUARRY

LOADING COMPANY  
SMITH CONTRACTING AND CO.

MACHINE CODE  
HITACHI ZAXIS 350LCN

Typical truck load history

Paper roll diameter 48 mm  
(1,9 inches)  
Paper width 57mm  
(2,2 inches)

Others printout formats are available.  
Please consult us with your requirements.



### SLIP PRINTER

The **Slip Printer** generates 3 copies of delivery dockets in a pre-printed format.

Ticket size 105 x 224 mm  
(4,1 x 9 inches)



### SLIPPRINTER

**Zenith Aggregates**  
 24, Riverside Road  
 Toledo - OH 43604  
 Ph. 419 1580 - fax 419 1589  
 e-mail: info@zenithaggregates.com  
 www.zenithaggregates.com

**Zenith Quarry Limited**  
 115, Jackson Road  
 Fremont - OH 43420  
 Ph. 3344 9283 - fax 3344 9284  
 e-mail: info@zenithaggregates.com  
 www.zenithaggregates.com

**DATE AND TIME**  
 15-02-2016 10:07

**CUSTOMER**  
 PHILLIPS CONSTRUCTIONS  
 HIGHWAY 61  
 44870 SANDUSKY  
 OHIO

**VEHICLE**  
 ESF 9355 26,50ton

**WEIGHT**  
 26,50ton

**PRODUCT**  
 ROCKS 0,74 26,50ton

**TICKET NR.** 125 **NR. OF WEIGHINGS** 5

**DESTINATION**  
 SANDUSKY PORT  
 19 NORTH GATE  
 44870 SANDUSKY  
 OHIO

**OPERATOR ID** DAVID **MACHINE CODE** HITACHI 350LCR

**SIGNATURE**  
*John J. J. J.*

## USB DATA TRANSFER AT NO EXTRA COST!

AN ADDED VALUE, STANDARD MOUNTED IN THE DEVICE.  
BEST DEAL OF THE INDUSTRY.



With a built-in USB port as standard on **helperXE** you can use a commercial USB memory stick and download the loadings accomplished during the day without extra optional cost: it's all built-in. Read the USB memory stick in your PC and open your loadings by using a basic spreadsheet program like Excell; then import or export data as you like and where you like. The loadings data are saved into your USB by date and time so no overwriting will happen and your imports will be crystal clear to find them out.



Front USB port, compactness is standard

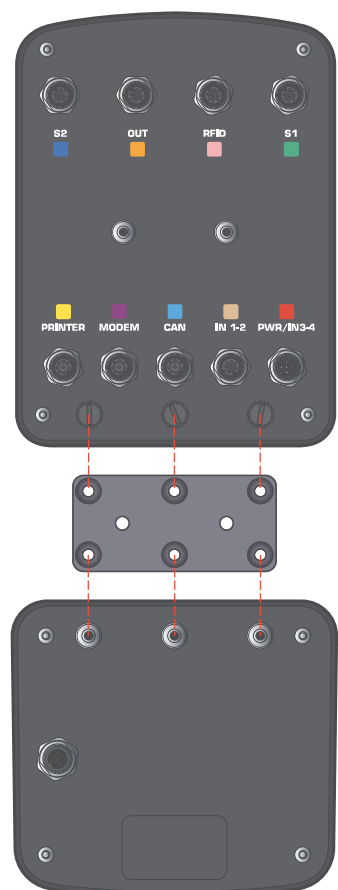
## REMOTE KEYS

### REMOTE YOUR MAIN KEYS

Bring your main 2 keys closer to your hands by using this small size **remote keys** box. It can be screws fixed or velcro attached to where it is more comfortable for your operation, usually the machine's right hand joystick.

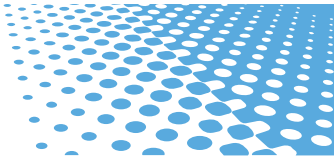


Remote keys



Integration is its plus





## WIRELESS DATA TRANSMISSION



### TRACKWEIGHT MOBILE

Quad-band cellular modem



Stay connected to your loader 24/7, 7 days a week.

**Trackweight** sends you real-time data from

your loader wherever you may be, all you need is an internet connection.

Its compact function gives you:

- Unlimited transmission range
- Real time data transmission
- Production data at a selected email account.
- 100% data security as data is sent in real time and stored on a server provided for you.
- Automatic and direct billing without having to enter delivery tickets manually after they are printed on the loader.
- Easy management of all extraction sites located in and outside the country.
- Upgrade your scale data management remotely.

The use of **Trackweight** modem requires to open an account into **ipotweb.com** because data will be sent to **VEI** servers and from **ipotweb.com** visible to the registered account, only. In alternative data can be sent to a dedicated FTP server other than **VEI**. Please contact **VEI** representative for further info this regarding.



### RFLINK

radio modem.  
Real-time data transmission.  
Limited range

Ideal for short distance data transmission within the same site where the loading machinery is working. **RFLink** is in fact used when delivery tickets need to be printed at the exit of the loading site or inside industrial plants in order to transfer data in real time.

Frequency and power transmission depends upon country of usage. It can be used for real time or delayed data transmission. If you want to take advantage of **VEI** Payload Monitoring software an account must be opened into **ipotweb.com** and an internet connection must be available in the job site. Otherwise your loading .txt files will be placed one by one into your preferred PC folder.



### WiFi



WiFi modem

Ideal in job sites where a WiFi network is existing. Your loader will be part of the WiFi network in matter of minutes and loading data available at your preferred location in the job site and web wide. Transmission range depends from your local access point. It can be used for real time or delayed data transmission.

If you want to take advantage of **VEI** Payload Monitoring software an account must be opened into **ipotweb.com** and an internet connection must be available in the job site. Otherwise your loading .txt files will be placed one by one into your preferred PC folder.



## IPOTWEB.COM MAKES YOUR BUSINESS MORE EFFICIENT

### PAYLOAD MONITORING SOFTWARE

Whether you use the USB or wireless data transfer, the payloads information ends up in a single database from where it can be exported to a billing software. With **ipotweb.com**, you can generate different types of reports, tracking down in real time your inventory, sales analysis and machine productivity. With **ipotweb.com** production and sales are linked to billing, cutting administration filing time drastically.

- REPORTS:**
- Loading movements
  - Customers
  - Vehicle IDS
  - Report sorted by Customer and Product
  - Report sorted by Product
  - Report sorted by Machine



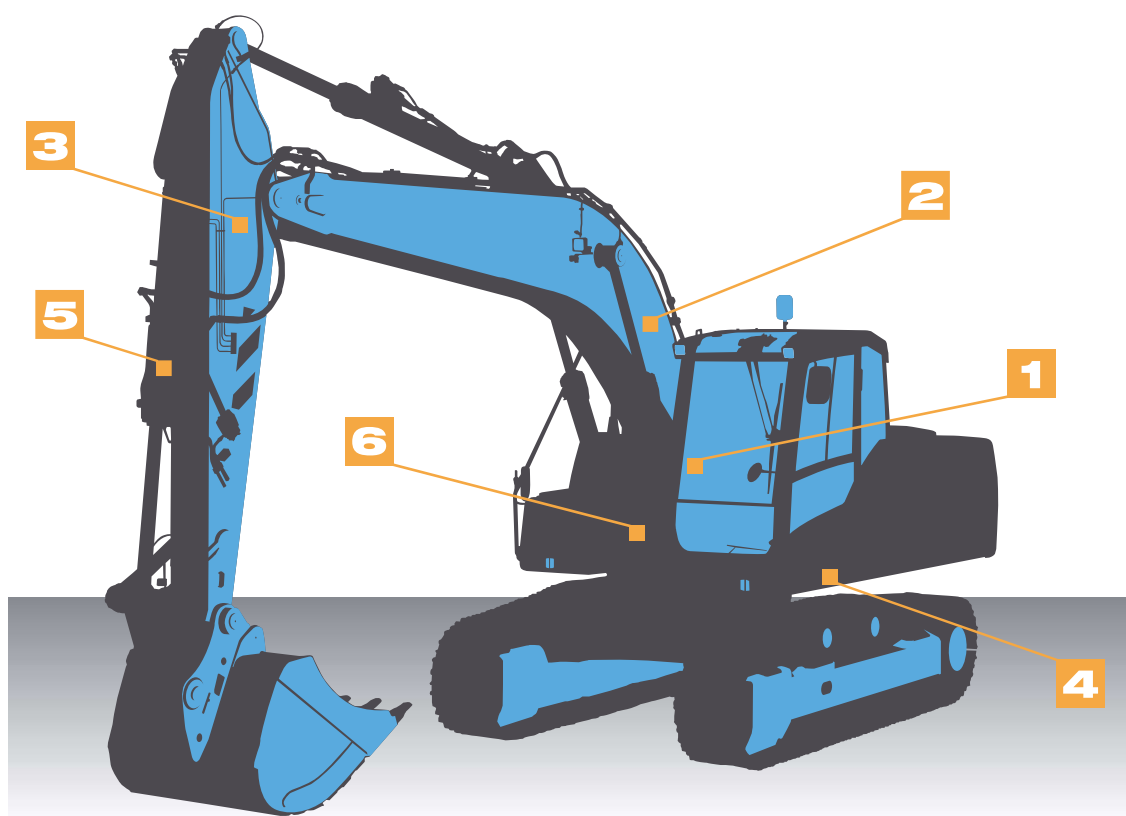
**ipotweb.com**

## THE WEIGHING CONCEPT

The position of the sensors can be chosen and their mounting is easy and fast.

**helperXE** is installed by trained personnel assuring a perfect fit into your machineries and delivering superior accuracy for a better optimization of your loadouts, production processes, sales analysis, inventory updates, trucks load optimization, loading machines productivity.

**VEI** scales are durable and **DESIGNED TO LAST**



**1**  
**helperXE** onboard instrumentation



**2**  
Boom sensor



**3**  
Stick sensor



**4**  
Track sensor



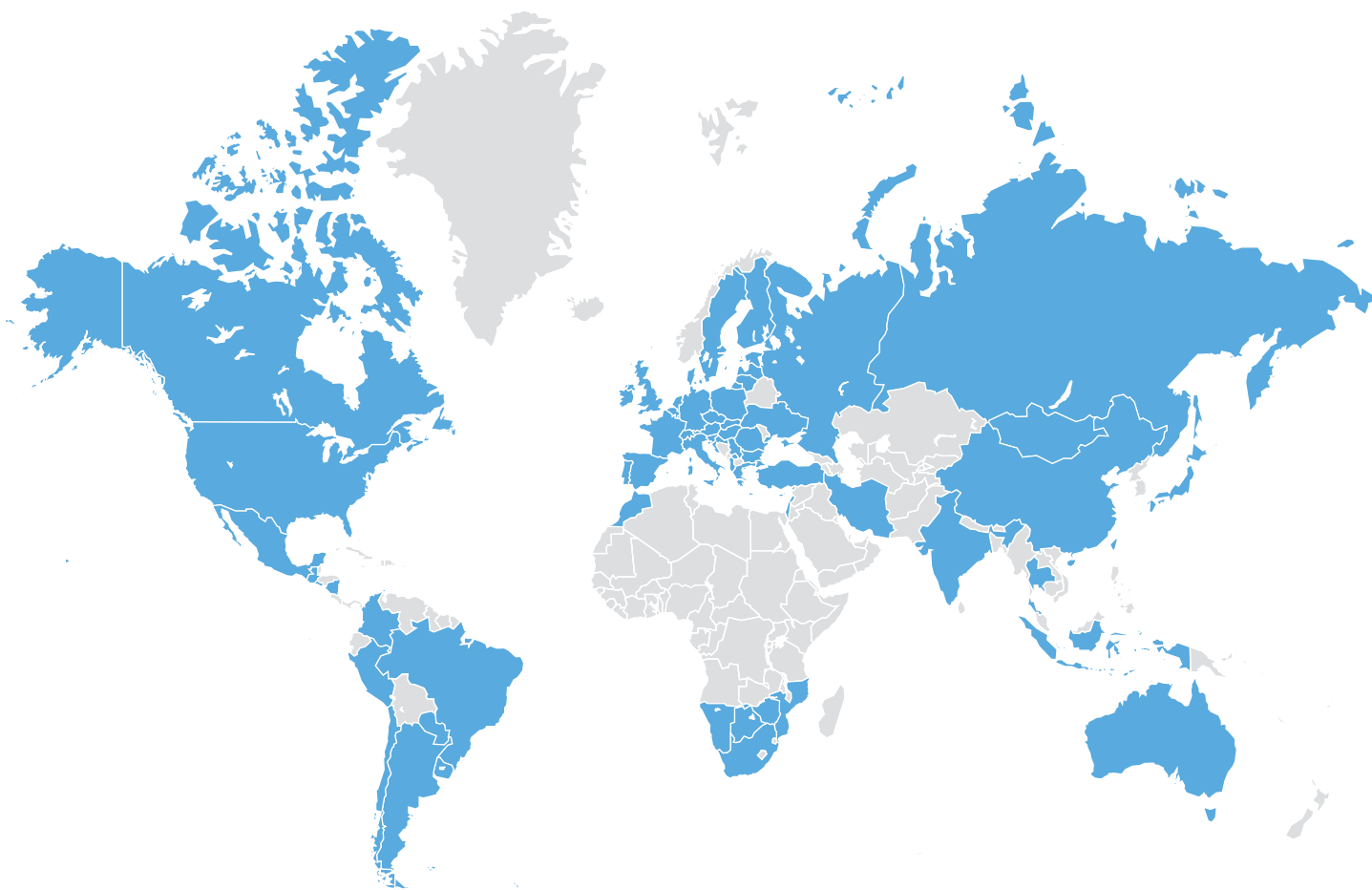
**5**  
Bucket sensor



**6**  
Load sensors to know the lifting pressure

## 53 TRAINED DISTRIBUTORS IN 60 COUNTRIES

PROVIDING CUSTOMER SUPPORT AND ON-SITE TRAINING **SINCE 1986**



www.veigroup.com - info@veigroup.com

