

[www.automator.com](http://www.automator.com)

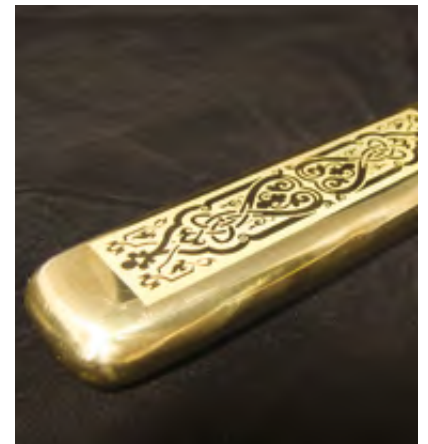
MACHINES AND SYSTEMS FOR INDUSTRIAL MARKING

## LASER CATALOGUE



Your Global Marking Partner since 1940



















## WHY CHOOSE AUTOMATOR?

Since its founding in 1940, AUTOMATOR has been focused exclusively on Industrial Marking Products and Solutions making us the largest manufacturer of marking equipment in the world.

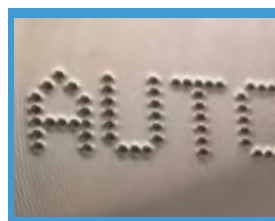
No matter how you want to permanently identify your product, AUTOMATOR has a solution that will exceed your expectation making a mark that will enhance your part and limit your liabilities.

Our GLOBAL network of partners (not just distributors!) are available in 102 countries serving 100+ business sectors. No matter where you are in this world, we are there to support you and our marking products, birth to death.

**We are your Global Marking Partner since 1940!**



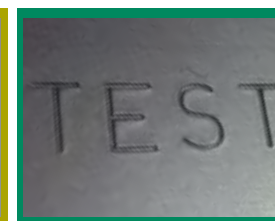
**LASER**



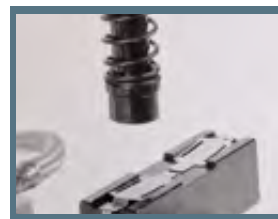
**DOT PEEN**



**ROLL STAMPING**



**IMPACT**



**PRESSES**



**SCRIBE**



**ACCESSORIES**



**CHEM-ETCH**



**ALL THE MATERIALS, ALWAYS THE PERFECT SOLUTION FOR YOUR MARKING NEEDS!**

Power	Source	Class 1 modelli	Class 4 modelli	Materials
2 W	UV @ 355 nm Blue laser	SUPERIOR	ALPHA	Ceramic • Precious Metals • Plastics • Silicon
3-5-10 W	Green @ 532 nm Green laser	SUPERIOR • ARENA REGINA • OMEGA	VIS	Anodized • Burnished • Metals and Alloys • Plastics (not transparent) • Silicon • Painted
10-20-30-40 W	YVO4 @ 1064 nm	SUPERIOR • REGINA ARENA • OMEGA	VIS	Anodized • Burnished • Ceramic • Black Paper • Wood • Metals and Alloys • Leather • Plastics (not transparent) • Polycarbonate • Silicon • Painted
10-20 W	Intra @ 1064 nm	SUPERIOR • ARENA OMEGA	ALPHA	Transparent materials (plastics, glass....)
22-33-54 W	ND:YB @ 1064 nm	ARENA • REGINA SUPERIOR • OMEGA	FYBRA	Anodized • Burnished • Ceramic • Wood • Metals and Alloys • Leather • Plastics (not transparent) • Polycarbonate • Silicon • Painted
10-25-50-100 W	CO2 @ 10640 nm	SUPERIOR • OMEGA	ALPHA	Anodized • Burnished • Paper • Ceramic • Wood • Plastics • Tissues • Painted • Glass
aWave Technology	YVO4@1060 nm	SUPERIOR • ARENA OMEGA REGINA	nanoVIS	Anodized • Burnished • Metals and Alloys • Plastics (not transparent) • Silicon • Painted • Woods • Ceramics





Power 22-33-54 W



# FYBRA™



## ACTIVE FIBER LASER SYSTEM

NB:Yb @1064 nm

### Active fiber marking laser

Designed for a variety of environments, FYBRA generates a high-power laser beam from the source to the head via a flexible fiber optic cable, that allows a considerable increase of the power, without compromising the size of the laser spot. This allows for a better marking result at higher powers and a better efficiency of the system.

#### Materials

- Anodized metal alloys • Burnished • Ceramics
- Ebony • Painted • Plastic • Polycarbonate • Silicon





**Softwares Genius e Nano**  
Page 32 for details



**Optional MOTF**  
Marking on-the-fly



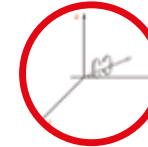
**Readers**  
Fixed or portable reader for QR codes, barcodes and datamatrix



**Connectivity**  
To the PC by Ethernet or USB



**Optional autofocus**  
Focal distance between marking head and piece to be marked detection device



**Optional axis**  
X/Y, Z and rotating Theta



**Red pointer**  
Marking preview

**Signals PLC digital I/O**  
Diagnostics output and check input

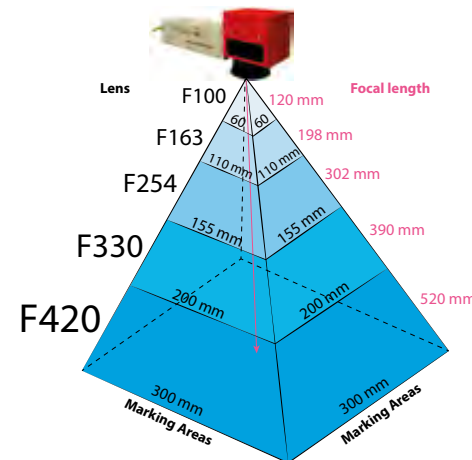
**Source**  
Air cooling

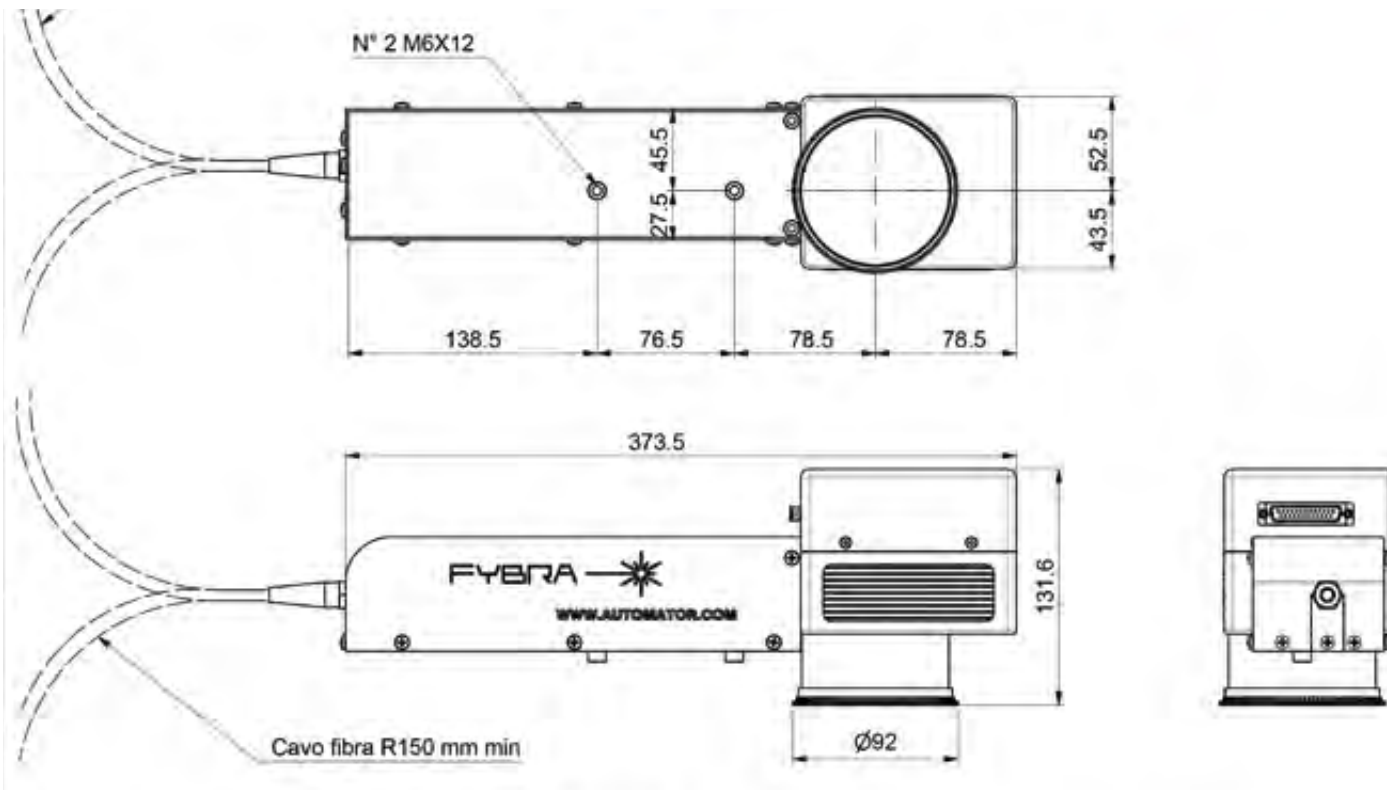


**External Power Supply**  
100/250 V 50/60 Hz



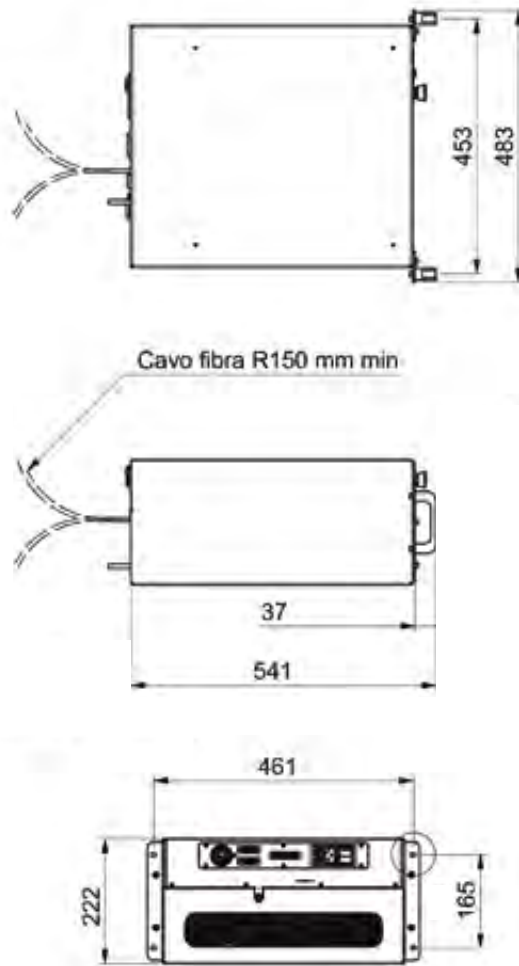
Lenses	F100	F163	F254	F330	F420
Focal lengths	120 mm	198 mm	302 mm	390 mm	520 mm
Marking Areas	60x60 mm	110x110 mm	155x155 mm	200x200 mm	300x300 mm



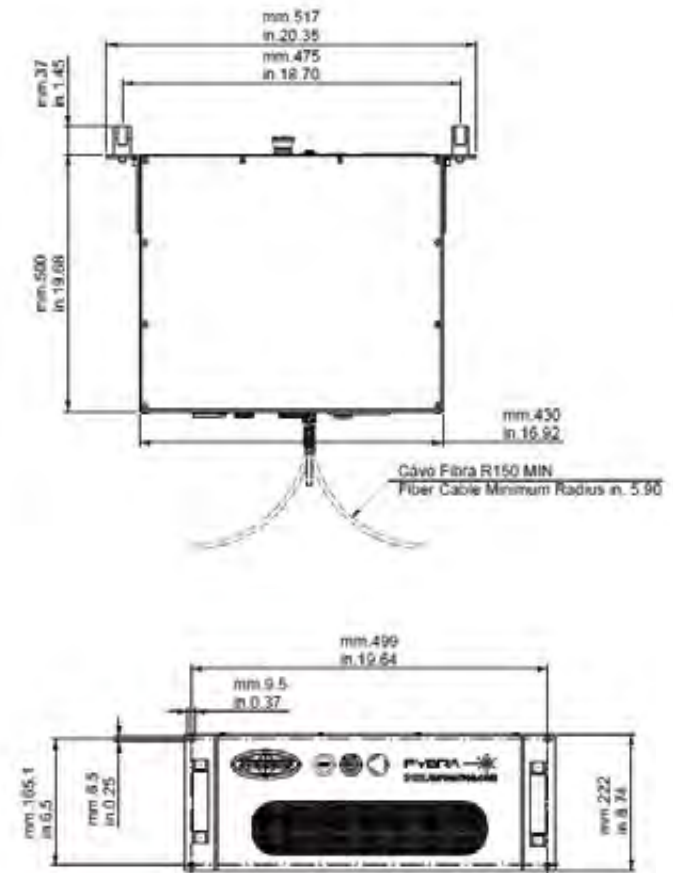




### FYBRA 22-33W



### FYBRA 54W





Your Global Marking Partner since 1940

Revolutionary aWave™ technology



# NANOVIS™



## The smallest laser in the world

Compact laser unit with auto-regulation of the frequency, it can mark with results comparable to larger laser units. A very cost-effective laser solution for a wide range of applications.

### Materials

Metals • Alloys • Anodized • Black paper •  
Burnished • Ceramics • Ebony • Painted Skin •  
Plastic • Polycarbonate • Silicon • Wood





**aWave**  
Revolutionary Automator technology for auto-setting of frequency



**Softwares Nano**  
Page 30 for details



**Connectivity**  
To the PC by USB



**Red pointer**  
Marking preview



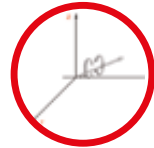
**External Power Supply**  
100/250 V 50/60 Hz



Lenses	F100	F163	F254	F330	F420
Focal lengths	120 mm	190 mm	302 mm	390 mm	520 mm
Marking Areas	60x60 mm	110x110 mm	155x155 mm	200x200 mm	300x300 mm



**Optional FocusFinder**  
Focus height automatic detection device



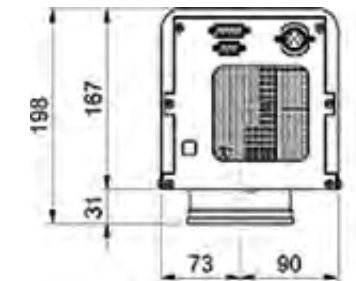
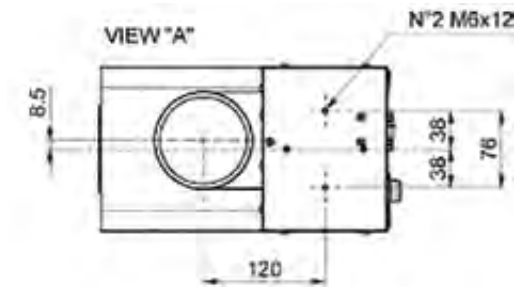
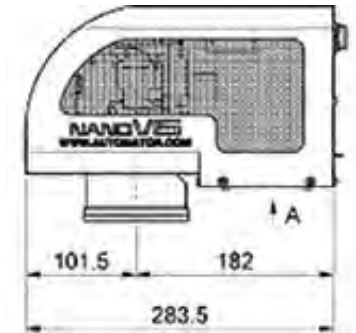
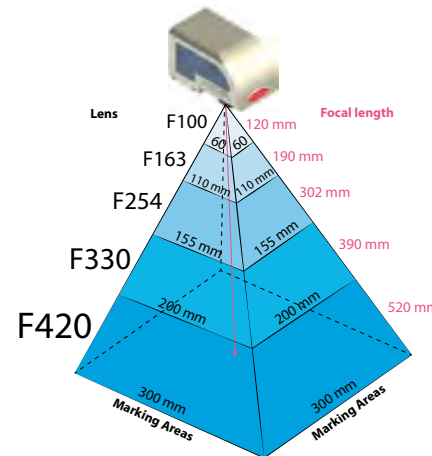
**Optional axis**  
Z and rotating Theta



**Readers**  
Fixed or portable reader for QR codes, barcodes and datamatrix

**Source**  
Air cooling

**Signals PLC digital I/O**  
Diagnostics output and check input





Power 10-20-30-40 W



# VIS™



## ALL IN ONE

YVO<sub>4</sub> @1064nm

**YVO<sub>4</sub> source, all in one**

Class 4 Yag laser system, extremely light and solid unit "all-in-one", which perfectly adapts to integrations in lines.

### Materials

- Anodized Metal
- Alloys
- Burnished
- Ceramics
- Ebony
- Painted
- Plastic
- Polycarbonate
- Silicon





**Softwares Genius**  
Page 32 for details



**Connectivity**  
Ethernet or Serial



**Red pointer**  
Marking preview



**External Power Supply**  
24VDC 100/240 V 50/60 Hz



**Optional FocusFinder**  
Focus height automatic detection device

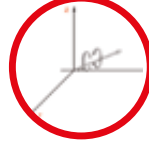


**Lenses**

	F100	F163	F254	F330	F420
Focal lengths	120 mm	198 mm	302 mm	390 mm	520 mm
Marking Areas	60x60 mm	110x110 mm	180x180 mm	220x220 mm	320x320 mm



**Readers**  
Fixed or portable reader for QR codes, barcodes and datamatrix



**Optional axis**  
X/Y, Z and rotating Theta



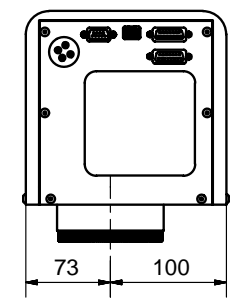
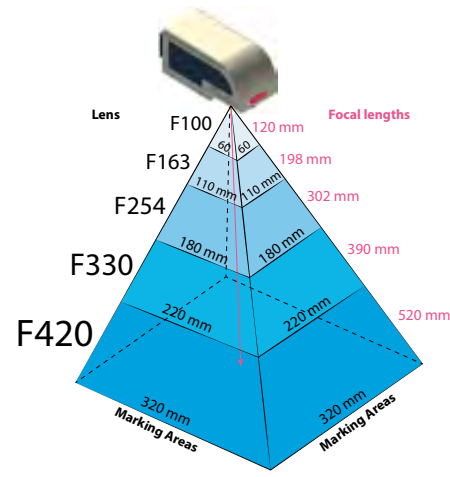
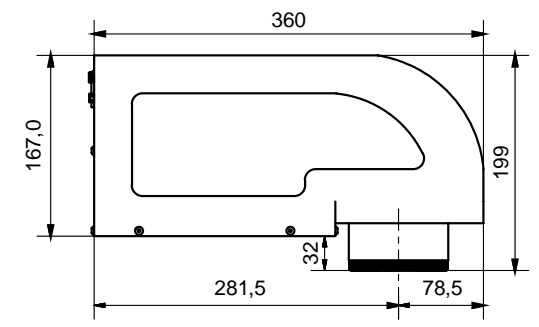
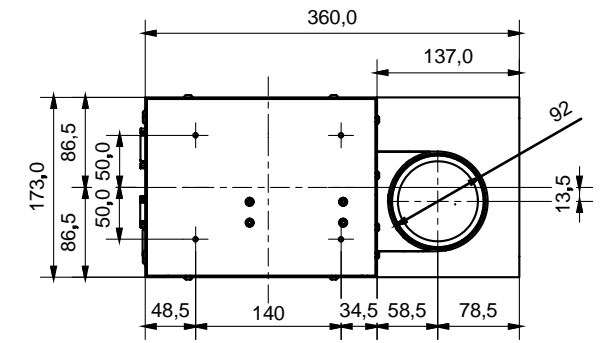
**Optional MOTF**  
Marking on-the-fly



**Stand alone board**  
Marking without PC

**Source**  
Air cooling

**Signals PLC digital I/O**  
Diagnostics output and check input





Power 3-5-10 W



# GREENVIS™



## ALL IN ONE

### YVO4 source, all in one 532 nm

Class 4 Yag laser system, extremely light and solid unit "all-in-one", which perfectly adapts to integrations in lines. Perfect for plastics

#### Materials

Plastics • Anodized Metal • Alloys • Burnished  
Ceramics • Ebony • Painted • Plastic •  
Polycarbonate • Silicon



**Softwares Genius**  
Page 32 for details



**Connectivity**  
Ethernet or Serial



**Red pointer**  
Marking preview



**External Power Supply**  
24VDC 100/240 V 50/60 Hz



**Stand alone board**  
Marking without PC



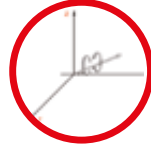
Lenses	F100	F163	F254	F330	F420
Focal lengths	120 mm	198 mm	302 mm	390 mm	520 mm
Marking Areas	60x60 mm	110x110 mm	180x180 mm	220x220 mm	320x320 mm



**Optional FocusFinder**  
Focus height automatic detection device



**Readers**  
Fixed or portable reader for QR codes, barcodes and datamatrix



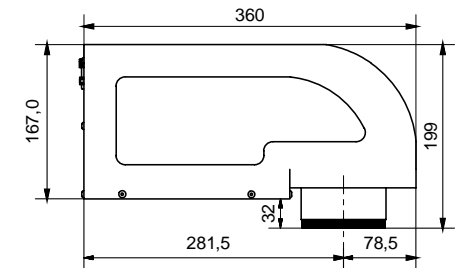
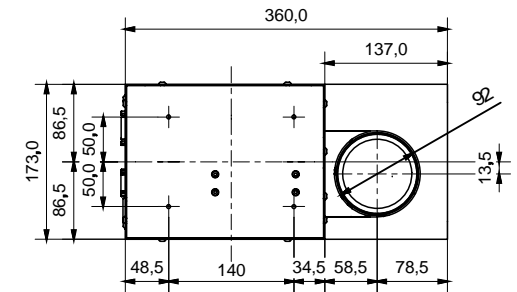
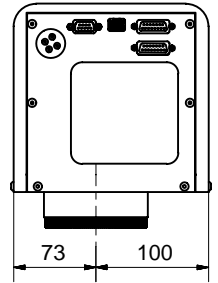
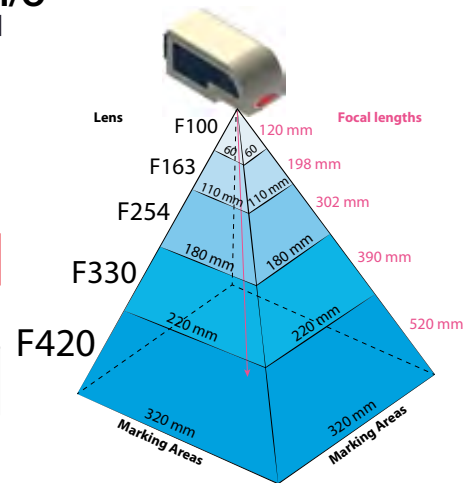
**Optional axis**  
X/Y, Z and rotating Theta



**Optional MOTF**  
Marking on-the-fly

**Signals PLC digital I/O**  
Diagnostics output and check input

**Source**  
Air cooling





Power 3-5-10-20-30-40 W



# VIS-P™



## PORTABLE LASER

YVO4 @1064nm

YVO4 @532nm green

### The smallest portable laser in the world

Class 1 Yag laser system, extremely lightweight and compact unit "all-in-one", which perfectly adapts to portable applications.

#### Materials

- Anodized Metal • Alloys • Burnished
- Ceramics • Painted • Plastic •
- Polycarbonate • Silicon



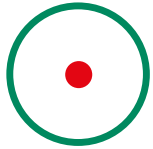
### Software Genius

Page 32 for details



### Connectivity

Ethernet or Serial



### Red pointer

Marking preview



### External Power Supply

24VDC 100/240 V 50/60 Hz



### Signals PLC digital I/O

Diagnostics output and check input



### Lenses

	F100	F163	F330
Focal lengths	120 mm	198 mm	390 mm
Marking Areas	60x60 mm	110x110 mm	220x220 mm



### Readers

Fixed or portable reader for QR codes, barcodes and datamatrix



### Stand alone board

Marking without PC



### Optional FocusFinder

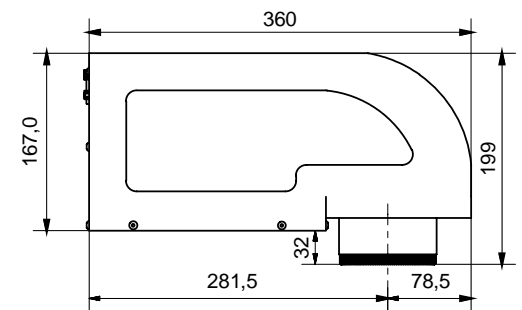
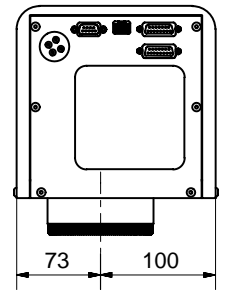
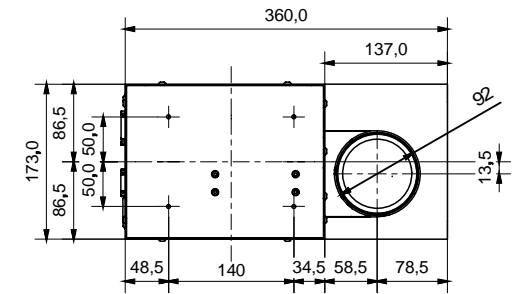
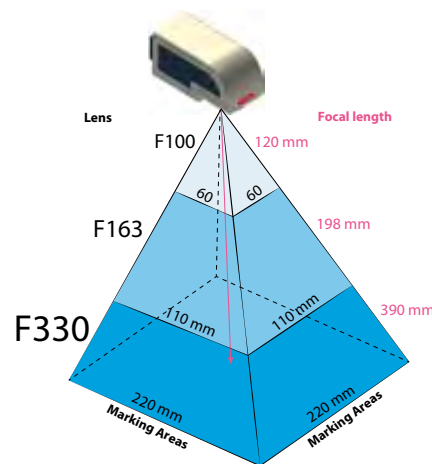
Focus height automatic detection device

### Portable kit

Handheld structure with adjustable telescopic security system and three supports

### Source

Air cooling





# ALPHA™

## LASER CO2

CO2@10640nm

### Powerful and efficient

Class 4 CO2 laser system, extremely light and solid in two units: laser source and galvanometric head with optical path, and 4-unit cabinet with electric circuit and electronics. Perfect to mark on wood and glass.

#### Materials

- Burnished Anodised • Ceramics • Ebony
- Glass • Painted • Paper • Plastic • Polycarbonate • Precious Stones • Rubber • Silicon • Wood







**Softwares Genius**  
Page 32 for details



**Connectivity**  
To the PC by Ethernet or USB



**Red pointer**  
Marking preview



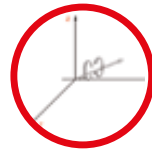
**Optional FocusFinder**  
Focus height automatic detection device



Lenses	F160	F100	F254	F420
Focal lengths	177 mm	107 mm	281 mm	454 mm
Marking Areas	110x110 mm	60x60 mm	180x180 mm	320x320 mm



**Stand alone board**  
Marking without PC



**Optional axis**  
X/Y, Z and rotating Theta



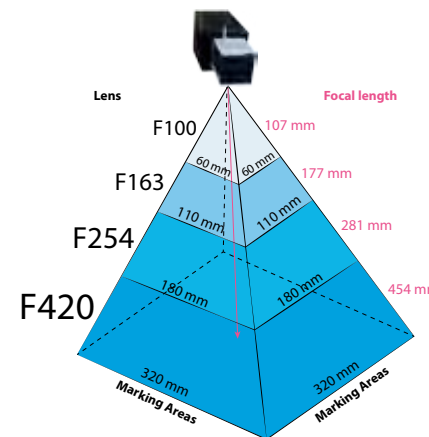
**Optional MOTF**  
Marking on-the-fly



**Readers**  
Fixed or portable reader for QR codes, barcodes and datamatrix

**Source**  
Air cooling

**Signals PLC digital I/O**  
Diagnostics output and check input





Loading Area 21,6x17,3"



# ARENA™

For FYBRA, NanoVIS, VIS and GreenVIS



**ARENA Workstation**  
for FYBRA 22-33-54 W

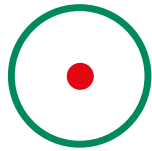
## COMPACT, ROBUST AND AUTOMATIC

### Benchtop laser marking in Safety class 1

Laser enclosure with Electro-pneumatic automatic opening door and software-driven Z axis

#### Materials

- Anodized Metal • Alloys • Burnished Ceramics • Ebony • Painted • Plastic
- Polycarbonate • Silicon



**Red pointer**  
Marking preview



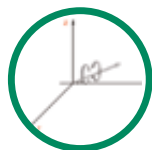
**Stand alone board**  
Marking without PC



**Readers**  
Fixed or portable reader for QR codes, barcodes and datamatrix



**Optional FocusFinder**  
Focus height automatic detection device



**Optional axis**  
Electric Z and rotating Theta



**Theta Axis**  
Electric, software driven rotary axis  
Weight: 11 kg

**Console**

On the front, with system drive commands and safety buttons

**Inspection window**

15.7x10"



**Z axis**  
Electric or software-driven, maximum height 7,9 mm



**Lenses**

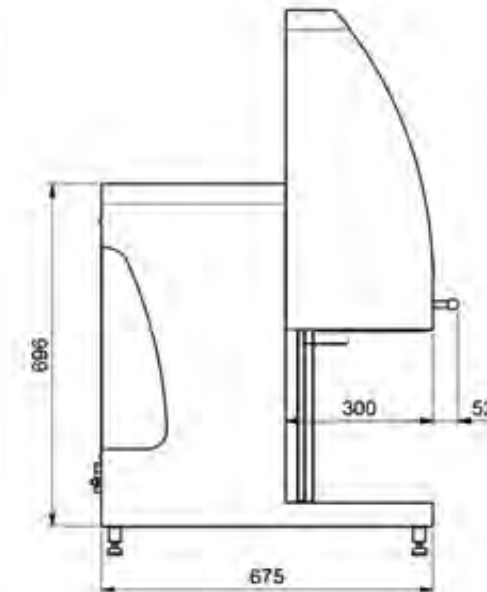
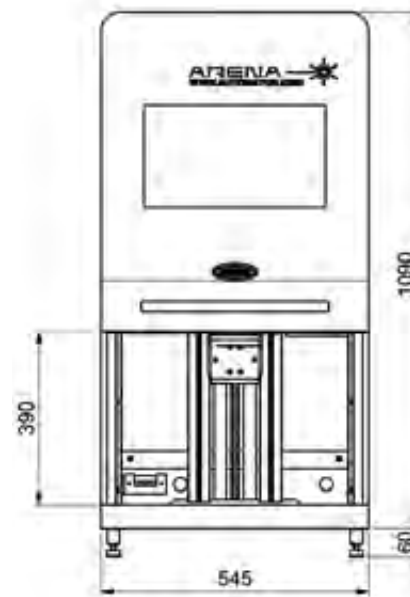
Source	F100	F160	F254
Item maximum height with FYBRA, nanoVIS, VIS and greenVis (mm)	313	243	139
marking area (mm)	60x60	110x110	180x180

**Loading Area**

21,6x17,3"

**Source**

Air cooling





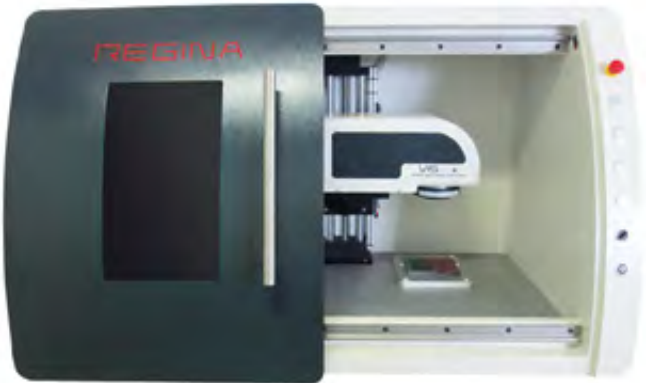


Loading Area 15,7x15,7"



# REGINA™

For FYBRA, nanoVIS, VIS and greenVIS

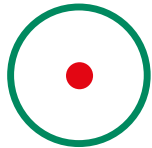


## STYLISH AND PRACTICAL

### Benchtop Laser Marking Class 1 Safety Enclosure

Class 1 laser enclosure with manual opening door  
and electric-automatic Z axis





**Red pointer**  
Marking preview



**Optional axis**  
Electric Z and rotating Theta



**Stand alone board**  
Marking without PC



**Readers**  
Fixed or portable reader for QR codes, barcodes and datamatrix



**Optional FocusFinder**  
Focus height automatic detection device



**Z axis**  
Electric, maximum height 7,9 mm



**Theta Axis**  
Electric, software driven rotary axis  
Weight: 11 kg

**Opening door**  
Sliding manual opening

**Loading Area**  
15,7x15,7"

**Console**  
On the front, with system drive commands and safety buttons

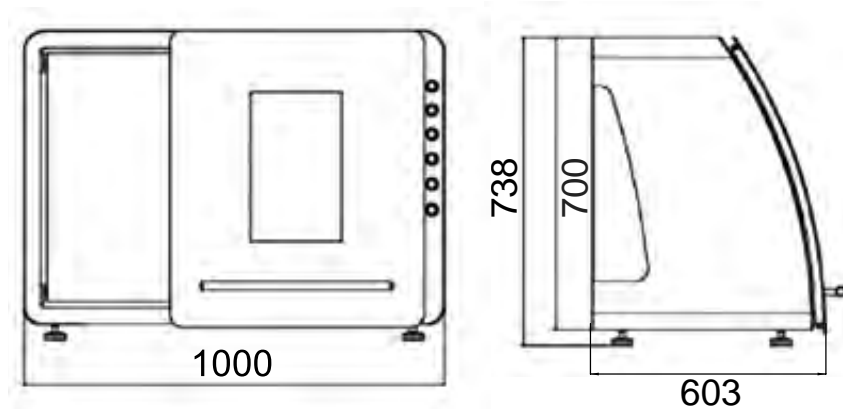
**Inspection window**  
15.7x10"

**Source**  
Air cooling



**Lenses**

Source	F100	F160	F254
Item maximum height with FYBRA, nanoVIS, VIS and greenVis (mm)	300	216	100
REGINA with ALPHA CO2 (mm)	300	190	-
Marking Area (mm)	60x60	110x110	180x180





Loading Area 13,5x13,4"



# OMEGA™

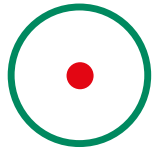
For FYBRA, nanoVIS, VIS and greenVIS



**COMFORTABLE AND RELIABLE**

**Benchtop laser marking in Safety class 1**

Class 1 laser enclosure with manual opening door and large protected inspection window. Efficient and cost-effective



**Red pointer**  
Marking preview



**Readers**  
Fixed or portable reader for QR codes, barcodes and datamatrix



**Optional FocusFinder**  
Focus height automatic detection device



**Lenses**

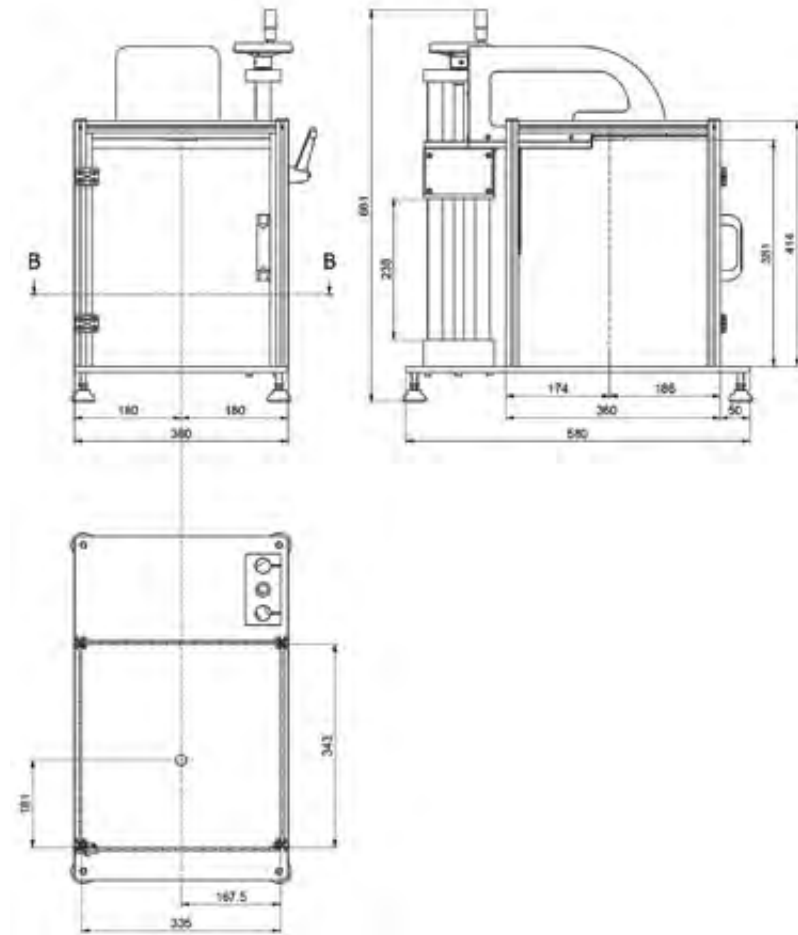
Source	F100	F160	F254
Item maximum height with FYBRA, nanoVIS, VIS and greenVis (mm)	200	110	10
Marking Area (mm)	60x60	110x110	180x180

**Source**  
Air cooling

**Software**  
Depending by the laser source

Panels can be easily removed to mark larger items

Hinged door, large inspection window, manual adjustment of the Z axis, available customizations





Loading Area 31,5"x31,5"



# SUPERIOR™

For FYBRA, nanoVIS, VIS and greenVIS



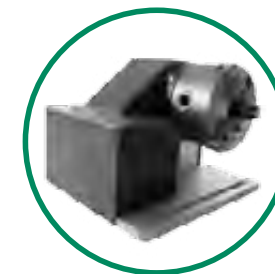
## FOR BIG PRODUCTIONS

**Class 1 laser enclosure for big productions with manual opening door and large protected inspection window.**

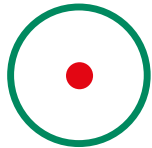
Loading area: 31,5"x31,5", with frontal opening door and protected inspection window



X/Y  
optional axis



Optional Theta  
rotary axis



**Red pointer**  
Marking preview



**Optional axis**  
X/Y, Z and rotating Theta



**Stand alone board**  
Marking without PC



**Readers**  
Fixed or portable reader for QR codes, barcodes and datamatrix



**Optional FocusFinder**  
Focus height automatic detection device



**Z axis**  
Electric, maximum height 7,9 mm



**Theta Axis**  
Electric, software driven rotary axis  
Weight: 11 kg



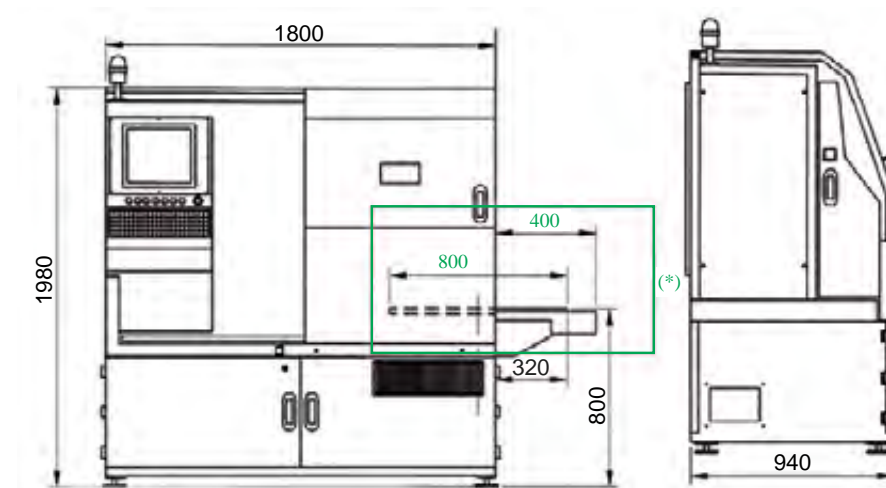
### Lenses

Source	F100	F160	F254
Item maximum height with FYBRA, nanoVIS, VIS and greenVis (mm)	630	546	430
SUPERIOR with ALPHA CO2 (mm)	730	520	-
Marking Area (mm)	60x60	110x110	180x180
with rotary table (mm)	450	370	250

**Loading Area**  
31,5x31,5"

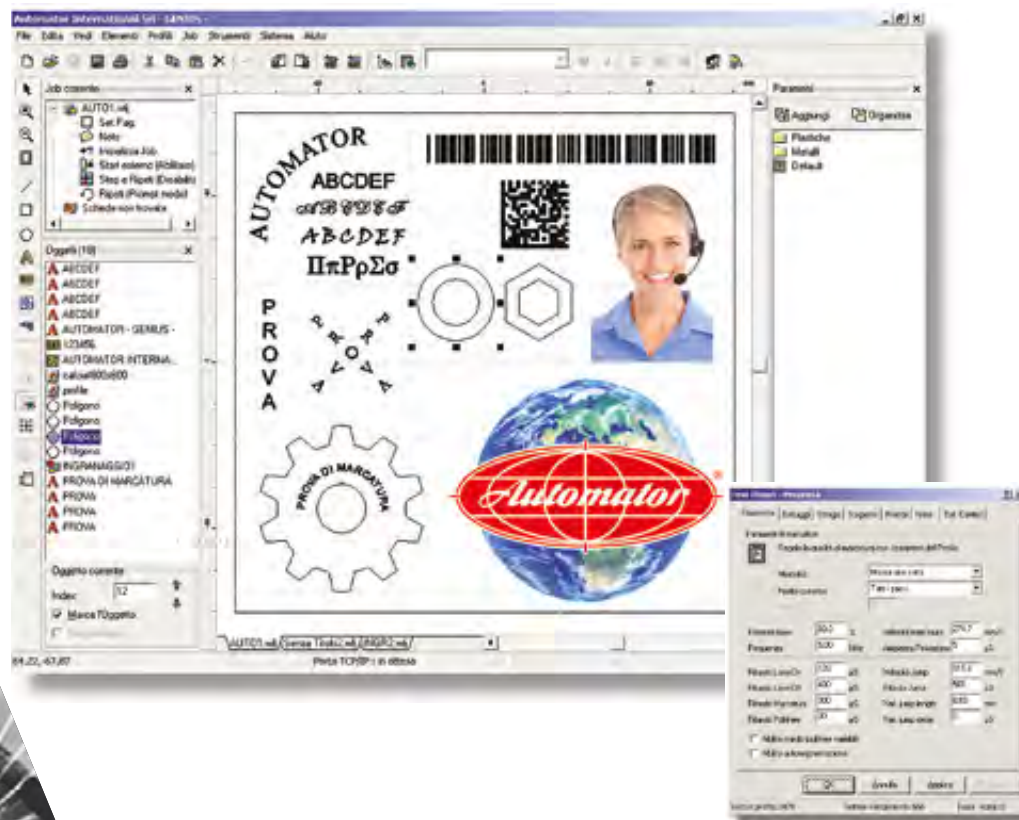
**Lights**  
System status signals

**Source**  
Air cooling



(\*) Optional Rotary table

# SOFTWARE GENIUS



Software versatile in the applications and easy to use, even by operators without CAD knowledge. Three different configurations: BASIC version, STANDARD version and ADVANCED version.

Complete management of the texts and arc texts with TrueType Font full compatibility  
 Direct management of the basic drawing elements (rectangles, circles, polygons, arcs, etc), management of barcodes (Code 39, codebar, code 93, code 12 EAN / UCC128, interleaved 2 or 5 ITF, postnet, tuple, tuples, EAN 8, EAN 13, booklan), DATAMATRIX (ECC 200) and QR codes, UID / UDI 2D Matrix.

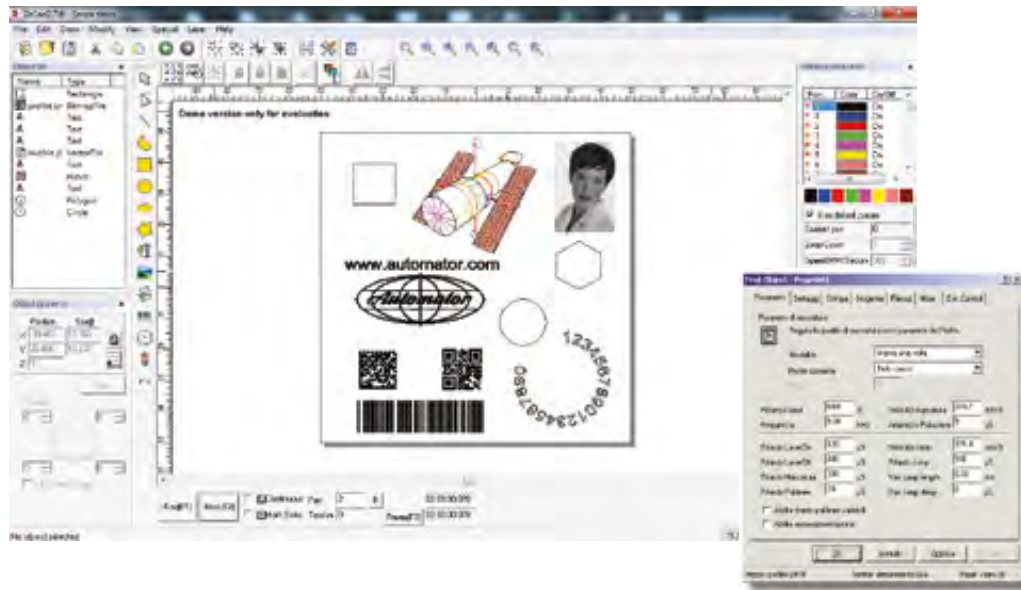
Graphics and photos importable in Raster format (JPG, BMP, PCX, GIF).

Drawings and logos importable in vector format (DXF, DWG, Ai, CDR, WMF, PLT, EMF). View and order management for marking objects, as well as ability to control external automations such as X and Y axes, Z axis Theta axis (rotary), delays and signal exchanges with the external environment.

# SOFTWARE STANDARD

Software versatile in the applications and easy to use, even by operators without CAD knowledge.

- Multi-language menu
  - Management barcode "Datamatrix", 2D code, QR code, PDF Queues, UID / UDI 2D Matrix
  - Easy import of vector drawings
  - Easy import of raster graphics
  - Complete set of laser parameters such as speed or power laser
  - Texts, Text arcs, text on curved lines, rectangles, polygons, circles and arcs
  - File DXF, WMF, AI, SVG, MF, PLT, EMF, BMP, JPG, EPX, PCX, GIF, PNG, TIFF
  - TTF Font ® (windows property)
  - Graphical preview
  - Texts with date, serial numbers, shift codes and year/month/day
  - Markings filled or only profile
  - Templates (object to be marked as background)
  - Proportion scale, move, rotate, group creation of each object on the screen
- No Communication protocols needed

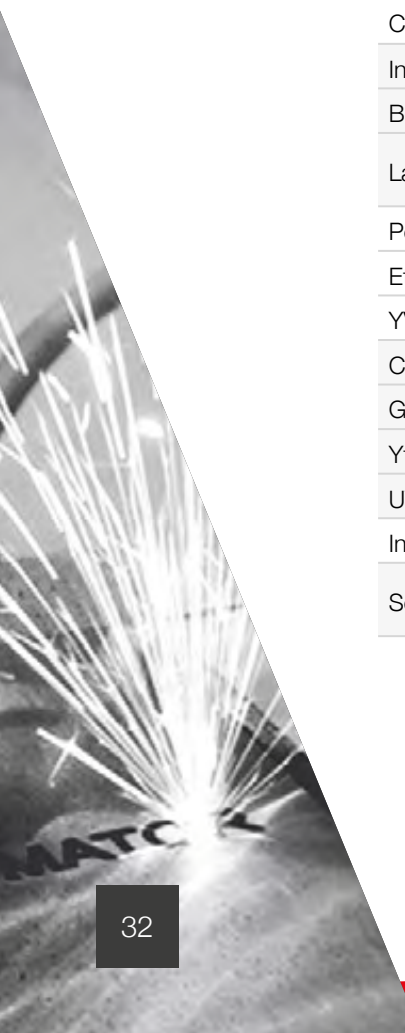






## MARKING LASERS COMPARISON

	Laser sources					Enclosures			
	nanoVIS	VIS	ALPHA	VIS-P	FYBRA	ARENA	REGINA	OMEGA	SUPERIOR
Class	4	4	4	1	4	1	1	1	1
Integration	x	x	x		x				
Benchtop						x	x	x	
Large scale productions									x
Portable				x					
Ethernet		x	x	x	x	x	x	Variable	
YVO4	x	x	x	x		x	x	x	x
CO2			x			x		x	x
Green		x	x			x	x	x	x
Ytterbium					x				
UV			x					x	x
Intra						x		x	x
Software	Nanovis	Genius	Genius	Genius	Genius/ Standard	Genius	Genius	Genius/ Standard	Genius





	nanoVIS	VIS	ALPHA	VIS-P	FYBRA	ARENA	REGINA	OMEGA	SUPERIOR
X/Y	Optional	Optional	Optional		Optional				Optional
Theta	Optional	Optional	Optional		Optional	Optional	Optional	Optional	Optional
Manual Z axis	Optional	Optional	Optional		Optional	Optional	Optional	x	Optional
Programmable Z Axis	Optional	Optional	Optional		Optional	x	x	Optional	x
Stand Alone (without PC)		Optional	Optional		Optional	Optional	Optional		Optional
Marking on the fly (MOTF)		Optional	Optional	Optional	Optional				
Reader	Optional	Optional	Optional	Optional	Optional	Optional	Optional	Optional	Optional
Preview	x	x	x	x	x	x	x	x	x
Anodized	x	x	x	x	x	x	x	x	x
Burnished	x	x	x	x	x	x	x	x	x
Ceramics	x	x	x	x	x	x	x	x	x
Ebony	x	x		x	x	x	x	x	x
Tissues			x			x		x	x
Glass			x			x		x	x
Leather	x					x		x	x
Metals	x	x	x	x	x	x	x	x	x
Painted	x	x	x	x	x	x	x	x	x
Paper	x		x			x		x	x
Plastics	x	x	x	x	x	x	x	x	x
Polycarbonate	x	x	x	x	x	x	x	x	x
Precious			x					x	x
Rubber			x			x		x	x
Silicon	x	x	x	x	x	x	x	x	x
Transparent materials						x		x	x
Wood	x		x			x		x	x



QR code



DataMatrix



Barcode

## FocusFinder™

Get always focused!

**MARK, READ AND TRACK!**





Automator is certified CISQ, the consortium for IT Software Quality



Automator Group believes in rational energy use as input in the design of its marking systems



Automator Group believes in rational energy use as input in the design of its marking systems



Automator Group believes that all its machinery must be designed and produced according to the concept of "green philosophy"



Automator is certified ISO 9001 IQ Net



# THE BIGGEST MARKING FAMILY IN THE WORLD

-   
**Automator America Inc** - Chillicothe, Ohio, USA  
(740) 983 0157  
info.us@automator.com - automator.com/am
-   
**Automator Iberomark SI** - La Garriga, Spain  
(+34) 938 717 095  
ventas@automator.com - automator.com/es
-   
翺慕 **Automator Trading (Shanghai) co. Ltd** - Shanghai, P.R. China  
(+86) 158 0174 3707  
info.cn@automator.com - automator.com/cn
-   
**Automator India** - Faridabad, India  
(+91) 129 414 2297  
info.in@automator.com - automator.com/in
-   
**OOO Automator** - Moscow, Russian Federation  
(+7) 495 921 03 09  
mail.ru@automator.com - automator.com/ru
-   
**Automator Turkey** - Istanbul, Turkey  
info.tr@automator.com - automator.com/tr
-   
**Automator Thailand** - 117/51-52 Moo 18, Klongnueng, Klonglung Pathumthani 12120 Thailand  
Jantima Channara -Kae- (+662) 529 5641-2
-   
**Automator Mexico** - Santa María Insurgentes, México  
(+55) 6726 3343  
info.mx@automator.com - automator.com/es
-   
**Traçamatrix** - Graveson, France  
(+33) 490 950 897  
info@tracamatrix.com - tracamatrix.com
-   
**Stadlers Corp FZC** - Al Qusais, Dubai, UAE 1F, No.7, Alley 23, Lane 85, Sec. 3, Muzha Rd., Wenshan District, 116, +971 (4) 238 2844  
fax +9714 2382855 info@stadlerscorp.com www.stadlerscorp.com
-   
**Traceability Solutions**, Automator Div.  
Johannesburg, South Africa - (+27) 78 27 382  
info.za@automator.com - automator.com/za

-   
**Automator International Srl** - Corsico, Italia  
(+39) 02 48 601 445  
marketing@automator.com - automator.com/it
-   
**Automator Asia Pacific** - Nunawading Vic., Australia  
(+61) 03 9894 8916  
salesap@automator.com - automator.com/aus
-   
**Automator CEE s.r.o.** - Prague, Czech Republic  
(+42) 0273132590  
info.cz@automator.com - automator.com/cz
-   
**Automator Poland** - Swidnica, Poland  
(+48) 695 663 457  
info.pl@automator.com - automator.com/pl
-   
**Automator d.o.o.** - Lesce, Slovenia  
(+386) 5 90 33 782  
info.si@automator.com - automator.com/si
-   
**Automator Andina S.A.S** - Medellín-Antioquia, Colombia  
+57 (4) 2359012  
info.andina@automator.com - automator.com/an
-   
**OOO Automator** - Poltava, Ukraine  
(+38) 0532 59 80 68  
info.ua@automator.com - automator.com/ua
-   
**Mach Ftd** - Bucharest, Romania  
(+40) 214 609 840  
mach@mach.ro - mach.ro
-   
**Oy Suomen EDM Ab** - Porvoo, Finland  
(+358) 19 5211400  
info.sf@automator.com - automator.com/sf
-   
**Toyo Corporation** - Aichi Ken, Japan  
(+81) 566 232 030  
ity1002@toyo-tos.com - toyo-tos.co.jp

-   
**Automator Brandone** - Watford, Great Britain  
(+44) 208 863 7141  
info.uk@automator.com - automator.com/uk
-   
**Automator OOD** - Pazardzhik, Bulgaria  
(+359) 893 558 655  
info.bg@automator.com - automator.com/bg
-   
**Torvala Maskinkomponenter** - Handen C Sweden  
Tel. (+46) 08 52294600  
info@torvallamaskin.se
-   
**Automator s.r.o.** - Stara Tura, Slovakia  
(+421) 915 708 066  
info.sk@automator.com - automator.com/sk
-   
**Automator Suisse** - Stabio, Switzerland  
(+41) 091 647 15 90  
info.ch@automator.com - automator.com/ch
-   
**Automator Korea**  
Gyeonggi-do, South Korea  
info.kr@automator.com - automator.com
-   
**Automator Iran** - Tehran, Iran  
(+98) 212 2571258  
info.ir@automator.com
-   
**Arnold Trading Co. Ltd.** - Industrial Area Holon 58810, Israel  
(+972) 355 813 13  
info@arnold.co.il - arnold.co/il
-   
**MF Flues Ind. Com. Ltda** - Sao Paulo, Brazil  
(+55)-11 55 147 400  
flues@flues.com.br - flues.com/br
-   
**Smartec Gaging Instruments Co. Ltd** - Wenshan District, taipei 116 Taiwan  
Tel: (+886) 2 2234 4396  
Info.th@automator.com
-   
**Novograv** - Weilerbach, Germany  
(+49) 06374 4027  
info.de@automator.com - automator.com



[www.automator.com](http://www.automator.com)