

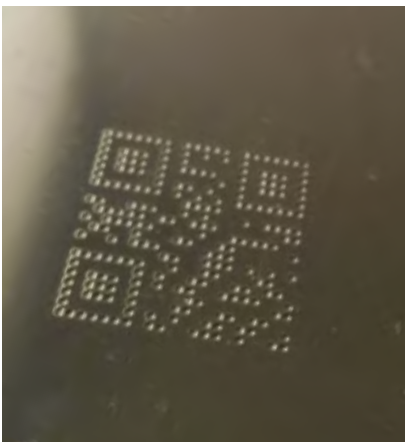
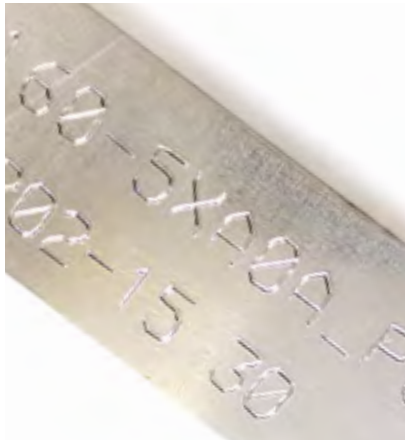
[www.automator.com](http://www.automator.com)

MACHINES AND SYSTEMS FOR INDUSTRIAL MARKING  
DOT PEEN SOLUTIONS  
CATALOGUE

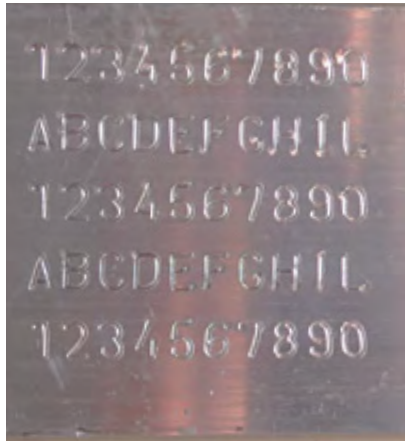


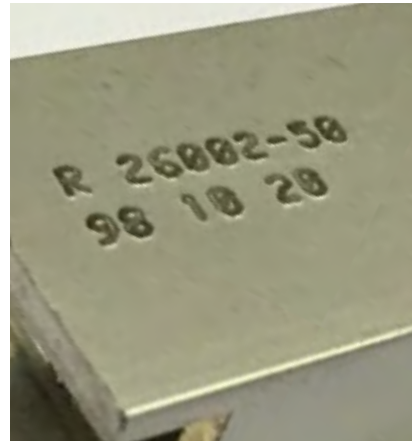
Your Global Marking Partner since 1940













## WHY CHOOSE AUTOMATOR?

Since its founding in 1940, AUTOMATOR has been focused exclusively on Industrial Marking Products and Solutions making AUTOMATOR the largest manufacturer of marking equipment in the world.

No matter how you need to permanently Identify your product, AUTOMATOR has the right solution that will exceed your expectations by making a mark that will not only enhance your part (and) but, will limit your liabilities and improve your traceability.

Our GLOBAL network of partners (not just distributors!) are available in 102 countries serving 100+ business sectors. No matter where you are in this world, AUTOMATOR is there to support you and stand behind our marking products.

**We are your Global Marking Partner since 1940!**



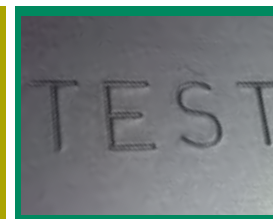
**LASER**



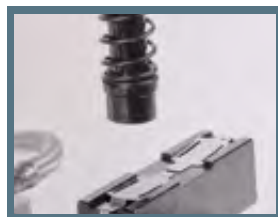
**DOT PEEN**



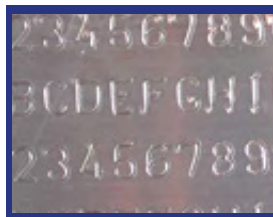
**ROLL STAMPING**



**IMPACT**



**PRESSES**



**SCRIBE**



**ACCESSORIES**



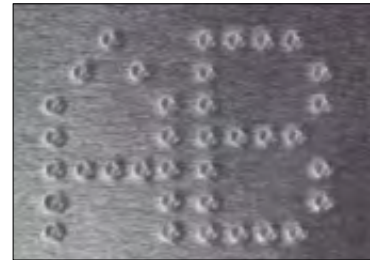
**CHEM-ETCH**

## DOT PEEN TECHNOLOGIES



### Vibrating Dot Peen

Characters are marked with a small pin while vibrating. Highly recommended for fast marking with very high quality needs.



### Electric Dot Peen

The pin is moved electrically by drive and return electric spring solenoid. Air not required. Recommended for high quality needs.



### Pneumatic Dot Peen

The Pin is moved automatically by opening and closing the drive and return air. Recommended for marking on irregular and rough surfaces



### Deep Dot Peen

The Air Solenoid has an increased capacity. Specialized pins are required for deep markings on the most resistant materials



### Controlled Dot Peen

Font characters are created with possibility to specify the density of the dots to be marked from 0 to 80 pixel/cm. Recommended for deep marking



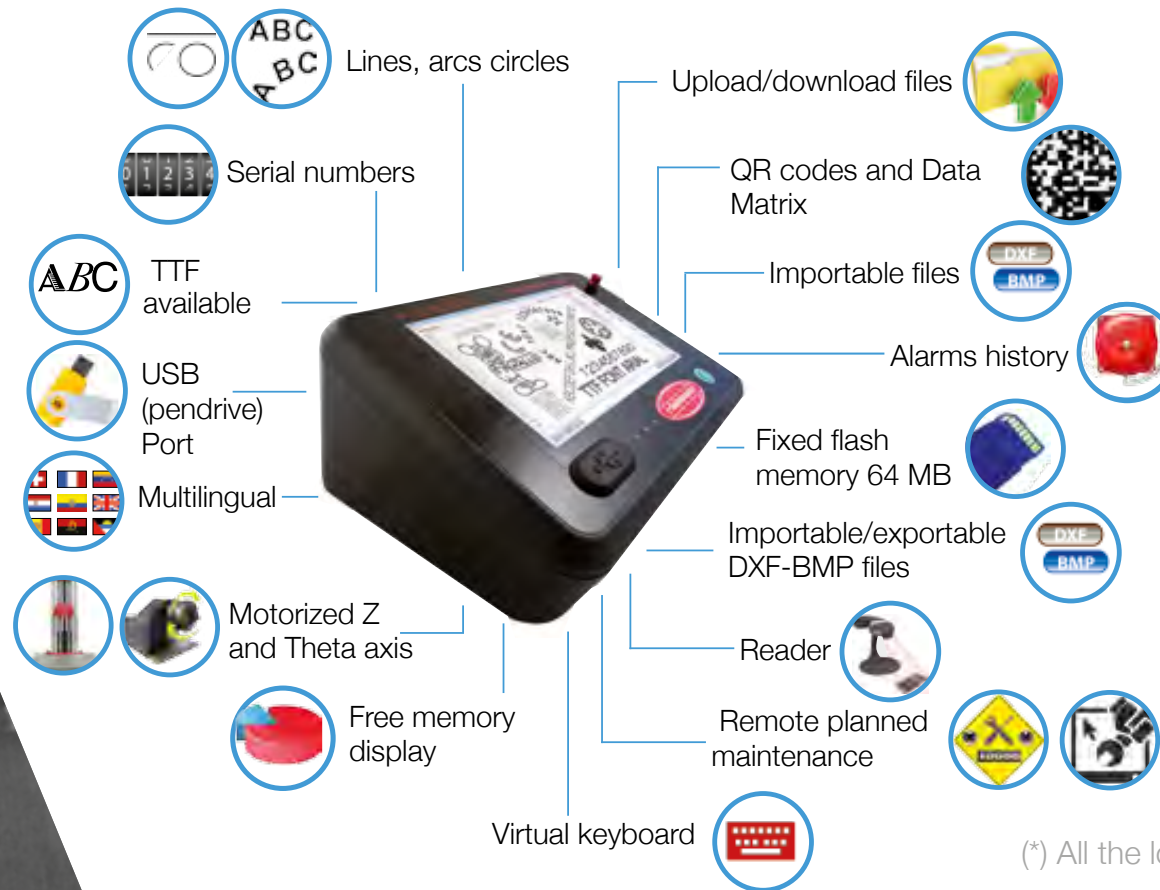
### Scribe Marking

Markings are made by striking the surface and removing the material for deep and silent marking



# AC500 CONTROLLER FOR DOT PEEN AND SCRIBE MACHINES

## UNIVERSAL AND FULL OPTIONALS



The AC500 controller can be used with a PC or alone with the special Automator MarkAlong™ technology.

The 7" touchscreen makes the many software's features easy to manage and use. For the first time, industrial marking reaches the maximum in efficiency and intuitive simplicity.

### Optional external communications protocols

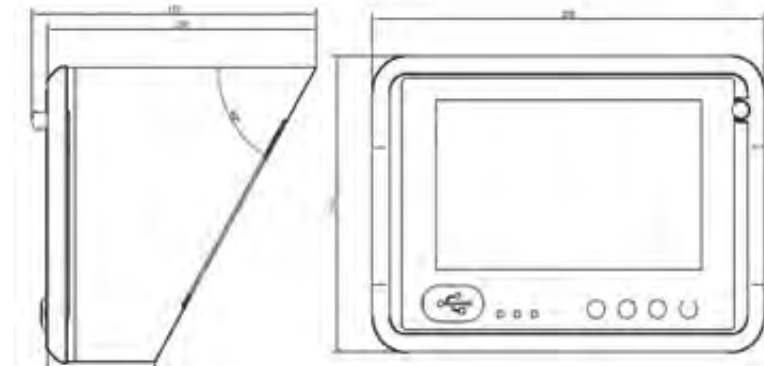
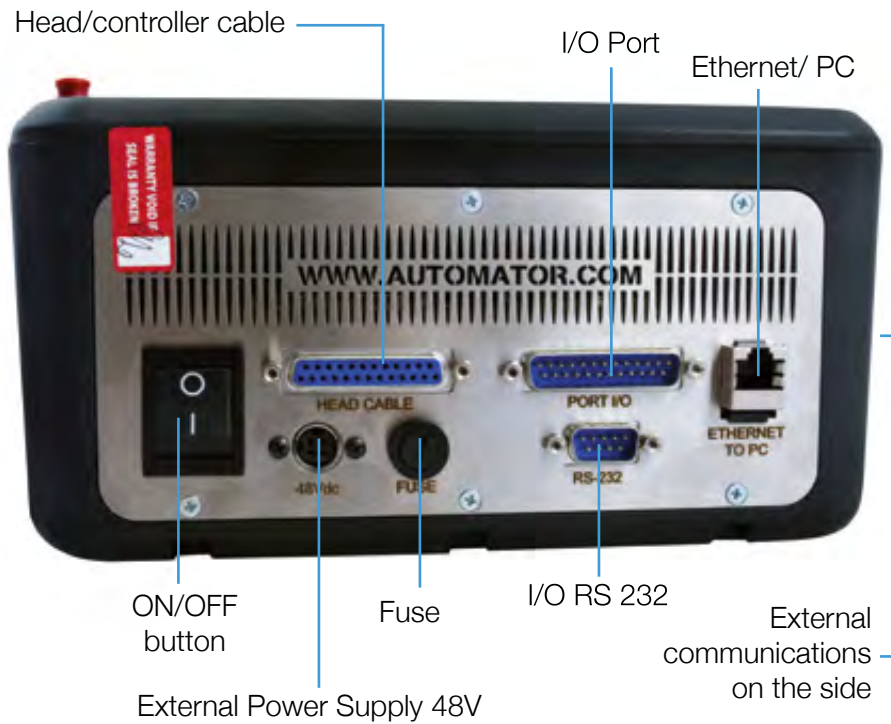


(\* All the logos are property of their own companies)



## NEW CONNECTIONS PLATE

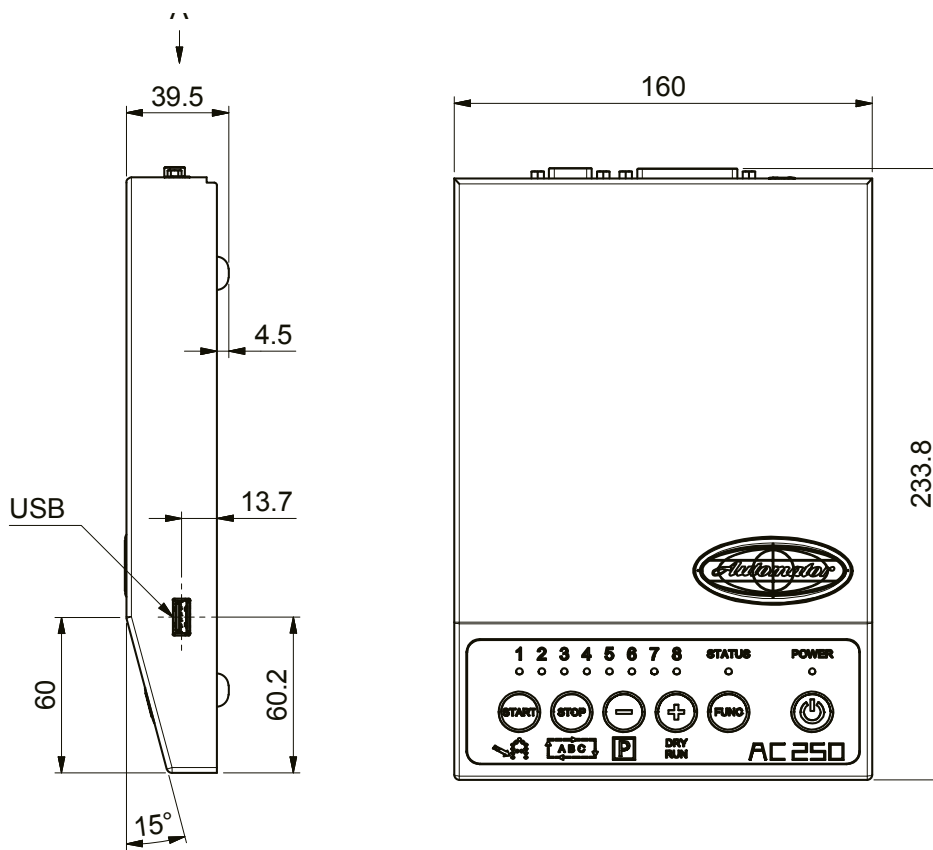
Standard Certifications for USA: (International Technology Equipment Safety part 1: general requirements, 609501) and Canada (International Technology Equipment Safety part 1: general requirements Amendment 1:2011, Amd. 2:2014, CSA C22.2#60950-1)



# AC250 CONTROLLER FOR DOT PEEN

UNIVERSAL AND COST-EFFECTIVE





Standard Certifications for USA: (International Technology Equipment Safety part 1: general requirements, 609501) and Canada (International Technology Equipment Safety part 1: general requirements Amendment 1:2011, Amd. 2:2014, CSA C22.2#60950-1)



The AC250 controller can be used with a PC or alone with the special Automator MarkAlone™  
Up to 8 programs management



Marking area 1x2,3"  
25x60mm



# ADP2560

Portable



**Integration dimensions**  
4,5x6,9x3,1"

Integration



**Integration weight**  
6,6 lbs

Benchtop

Use Automator dot peen marker easily in both toolstand and portable mode





Marking area 1x4,7"  
25x120mm



# ADP25120

Portable



**Integration dimensions**  
7,8x6,9x3,1"

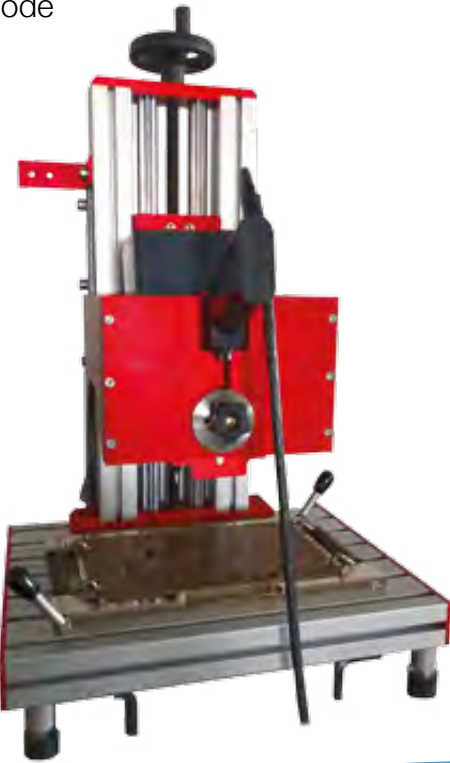
Integration



**Integration weight**  
8,8 lbs

Benchtop

Use Automator dot peen marker easily in both toolstand and portable mode





# ADP5090

Portable



**Integration dimensions**  
7x5,9x4,7"

Integration



**Integration weight**  
11 lbs

Benchtop





Marking area 4,7x6,3"  
120x160mm



# ADP120160

Portable



Integration



Benchtop



**Integration dimensions**  
8,6x10,2x4.9"

**Integration weight**  
18,7 lbs



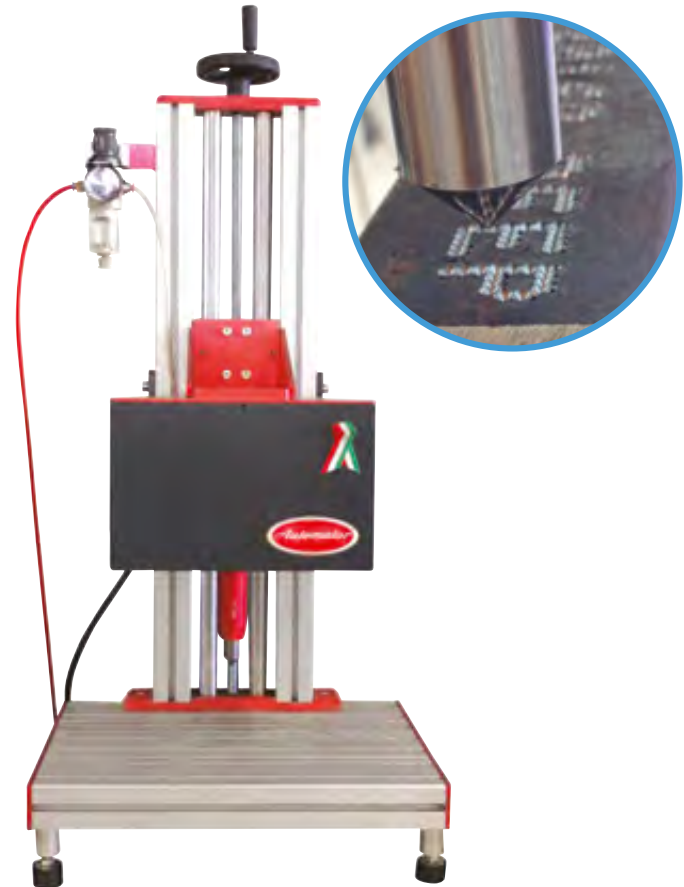
# ADP120160 DEEP FOR DEEPER MARKINGS

Integration



**Integration dimensions**  
8,6x10,2x6,7"

Benchtop



WATCH THE VIDEO!

**Integration weight**  
21,8 lbs





Marking area 11,8x15,7"  
300x400mm



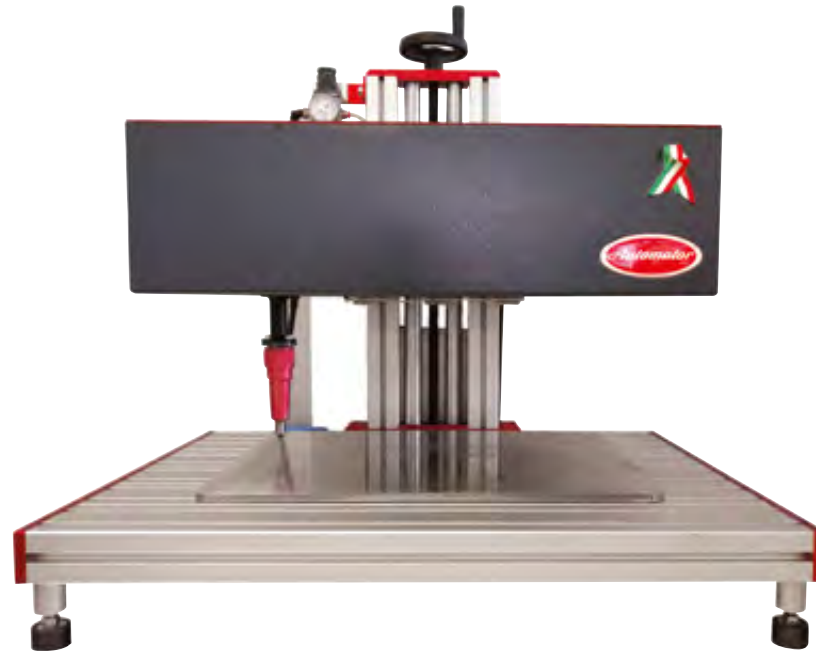
# ADP300400 FOR LARGEST MARKING AREAS

Integration



**Integration dimensions**  
20,2x16,7x5.8"

Benchtop



**Integration weight**  
46,3 lbs



Marking area 2,3x3,5"  
60x90mm



# ASM6090 SCRIBE MARKING

Integration



**Integration dimensions**  
6,7x7,8x7,6"

**Integration weight**  
13,2 lbs

Benchtop



WATCH THE VIDEO!





Marking area 1,5x5,9"  
40x150mm



# ASM40150 SCRIBE MARKING

Integration



**Integration dimensions**  
14,1x7,8x10,6"

Benchtop



**Integration weight**  
41,8 lbs

# MARKING PINS

## Pneumatic - Controlled dot

Drive air - Return spring



3 - 6 mm dot



12 mm dot



18 mm dot



3 - 6 mm XL dot

## Pneumatic - Vibrating dot

Drive air - Return spring



4 mm vibro



3 mm vibro

## Electric

Solenoid driven



3 mm electric

## Scribe pin

Contact marking - Silent marking



16 mm  
for ASM40150



6 mm  
for ASM6090

# SOFTWARE AC500/PC AC250



**Software** with intuitive and flexible interface, it allows a graphic freedom of absolute value.

Thanks to the touch screen graphic display, it is easy to navigate and to create messages to be marked and set its parameters, displaying also the time of the performance.

The preview allows to represent exactly what will be marked and any change in the message will be displayed instantly. The software provides for the creation of messages with the date in various formats, fix or variable texts, codes, serial numbers, Data matrix and logos. Possible the creation of the programs on the PC, which can be easily transferred to the AC500 controller with USB stick or USB connection.

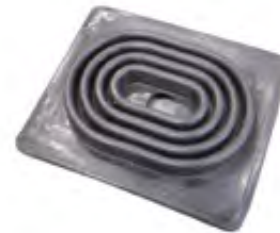
# OPTIONS



**X/Y axis**  
Stroke 11,8x11,8",  
stepper motor, maximum  
weight 88 lbs



**Extension**  
For 1,5"  
cartridge



**Rubber Boot protection  
for ADPs**  
To protect the marker from  
dusts and infiltrations



**Portable standoff**  
Handheld for ADP  
markers



**Rotating Axis to mark on  
circumferences**  
For diameters up to 3,7", stepper motor,  
maximum weight 16,5 lbs



**Command box**  
With start/stop buttons  
and cable



**Start marking pedal**  
With cable and adapter



For all the models



**Plate holder**

Plate fastening system with double spring anchoring for dot peen markers



**Radial extension kit**

3,3" and 5,2"



**Portable kit**

Two-handed handheld

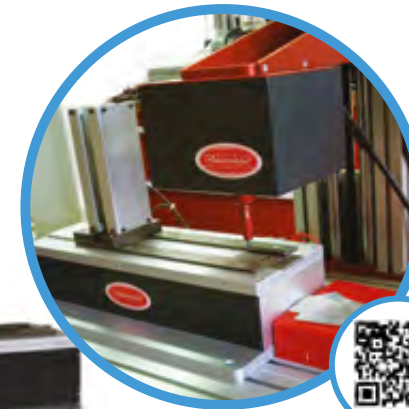


**Manual or motorized Z axis**

Available in height standard or up to 47"

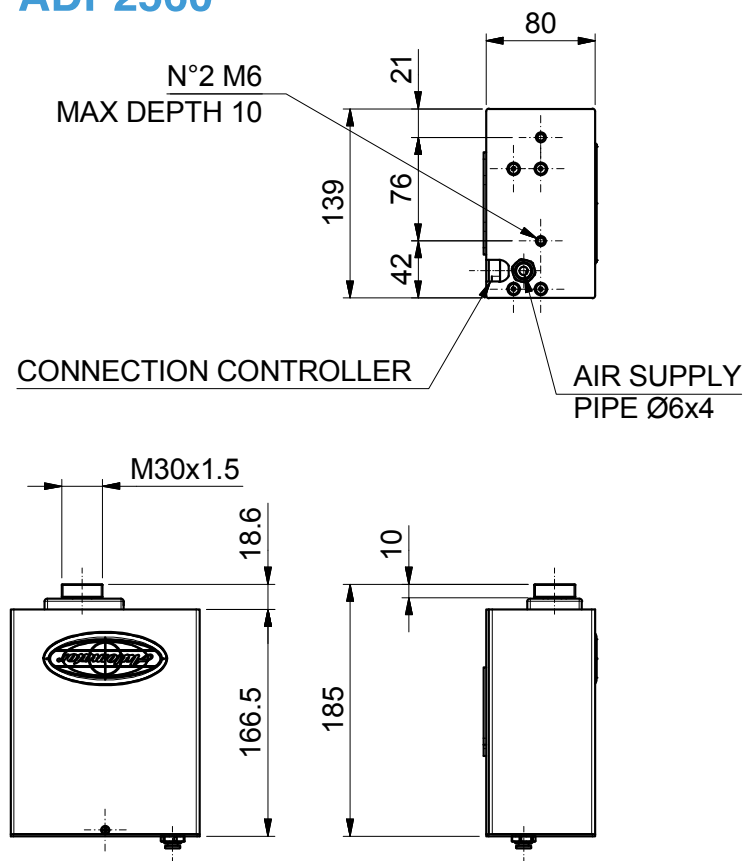
**Tag Feeder**

Automatic dual guide tag feeder with electro-pneumatic pushing system that the registration of the height of the marking head.

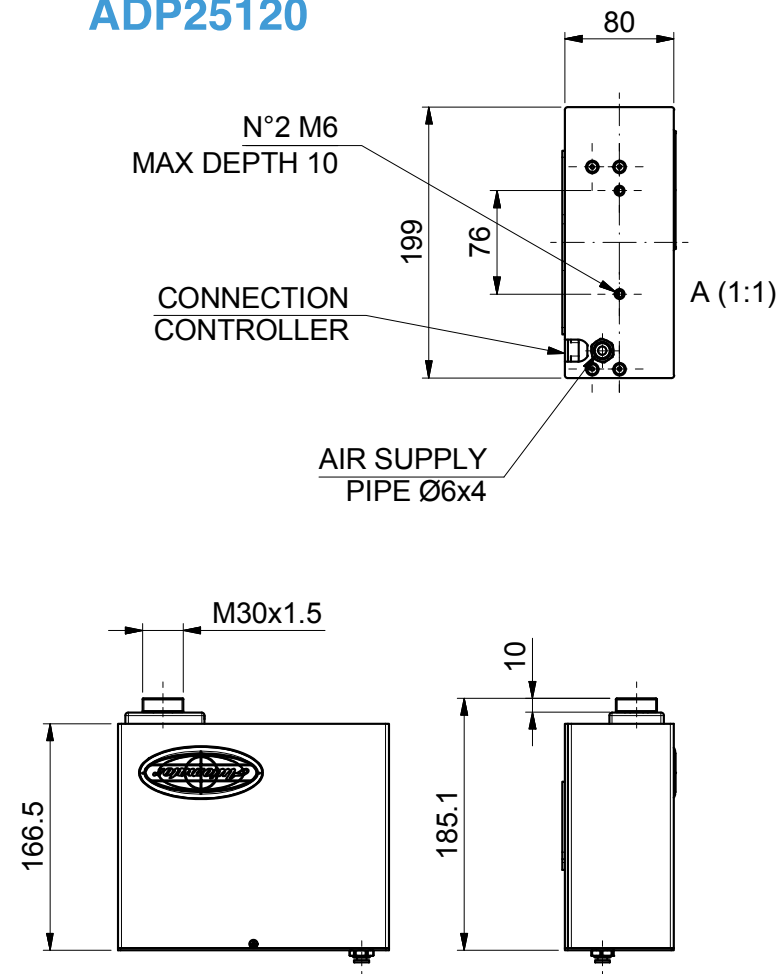


Watch the video!

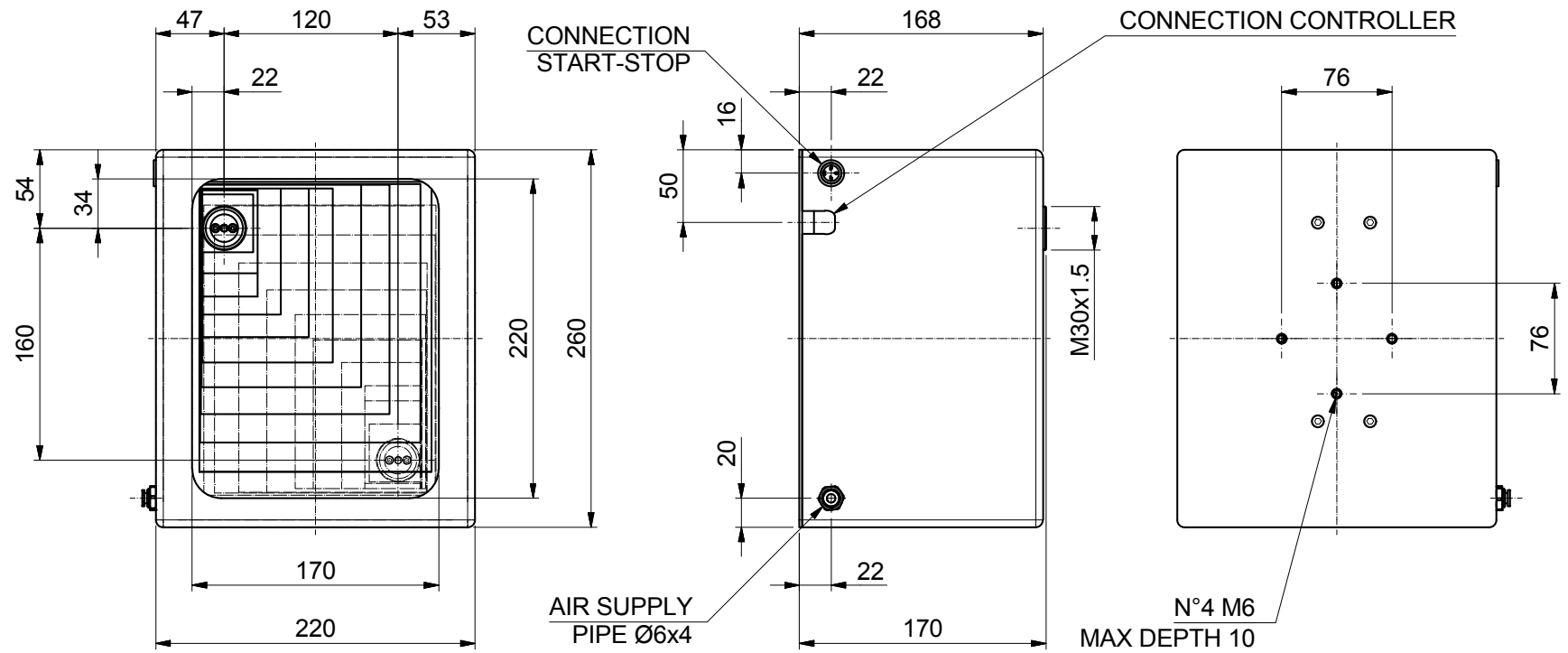
## ADP2560



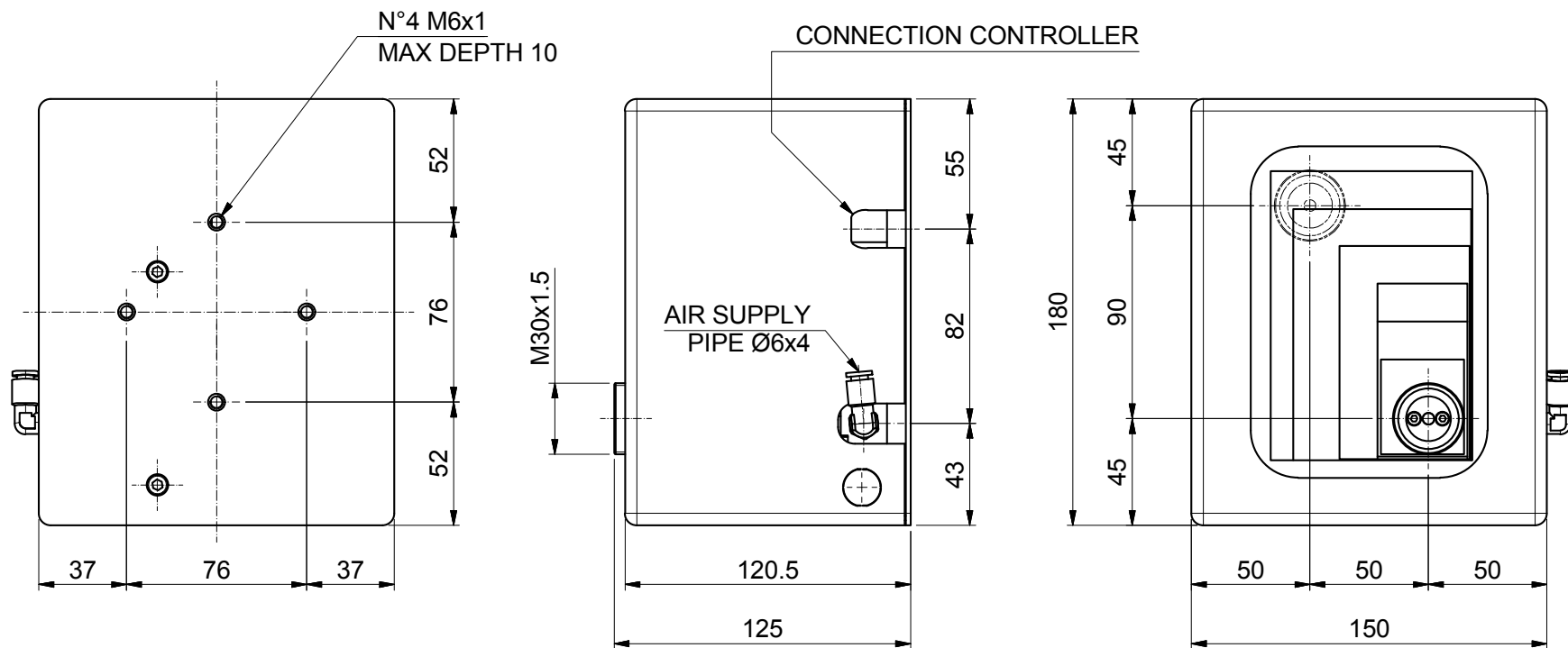
## ADP25120







SCALE (1:5)

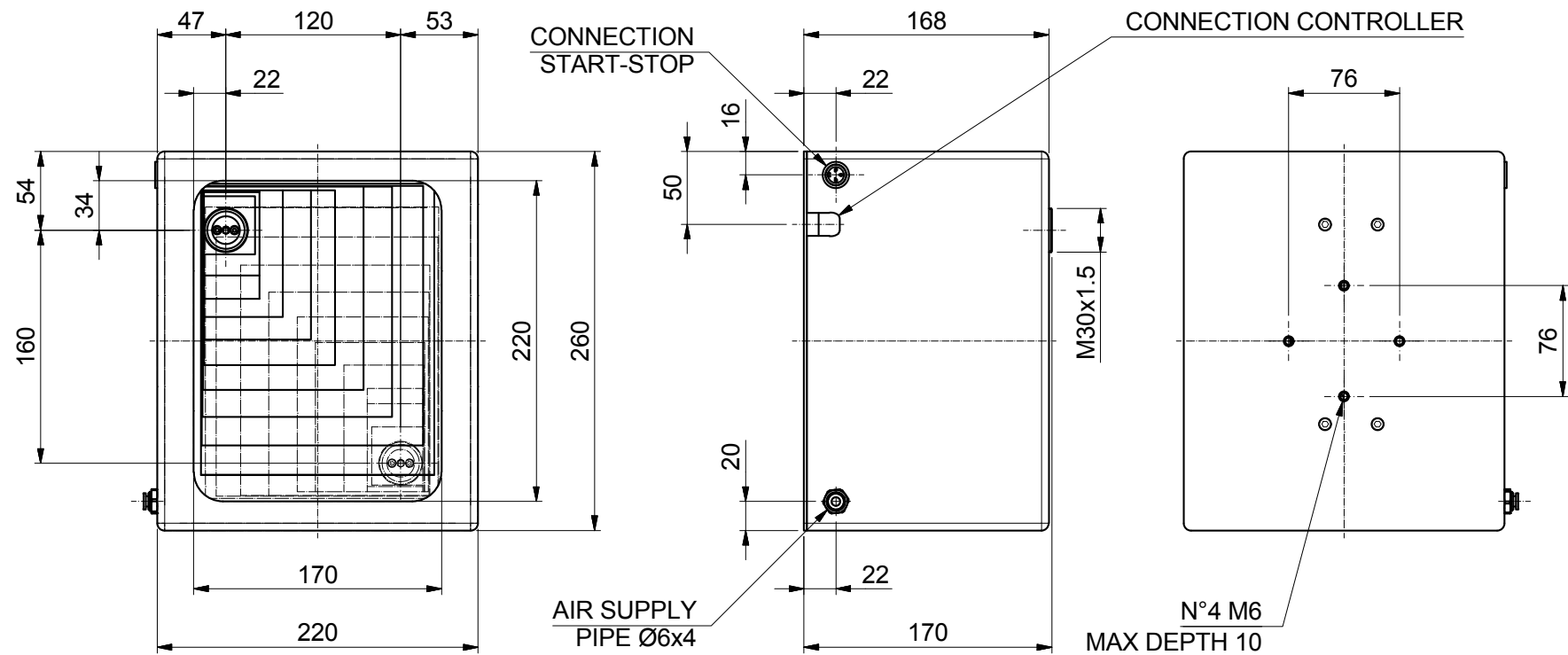


SCALE 1:5

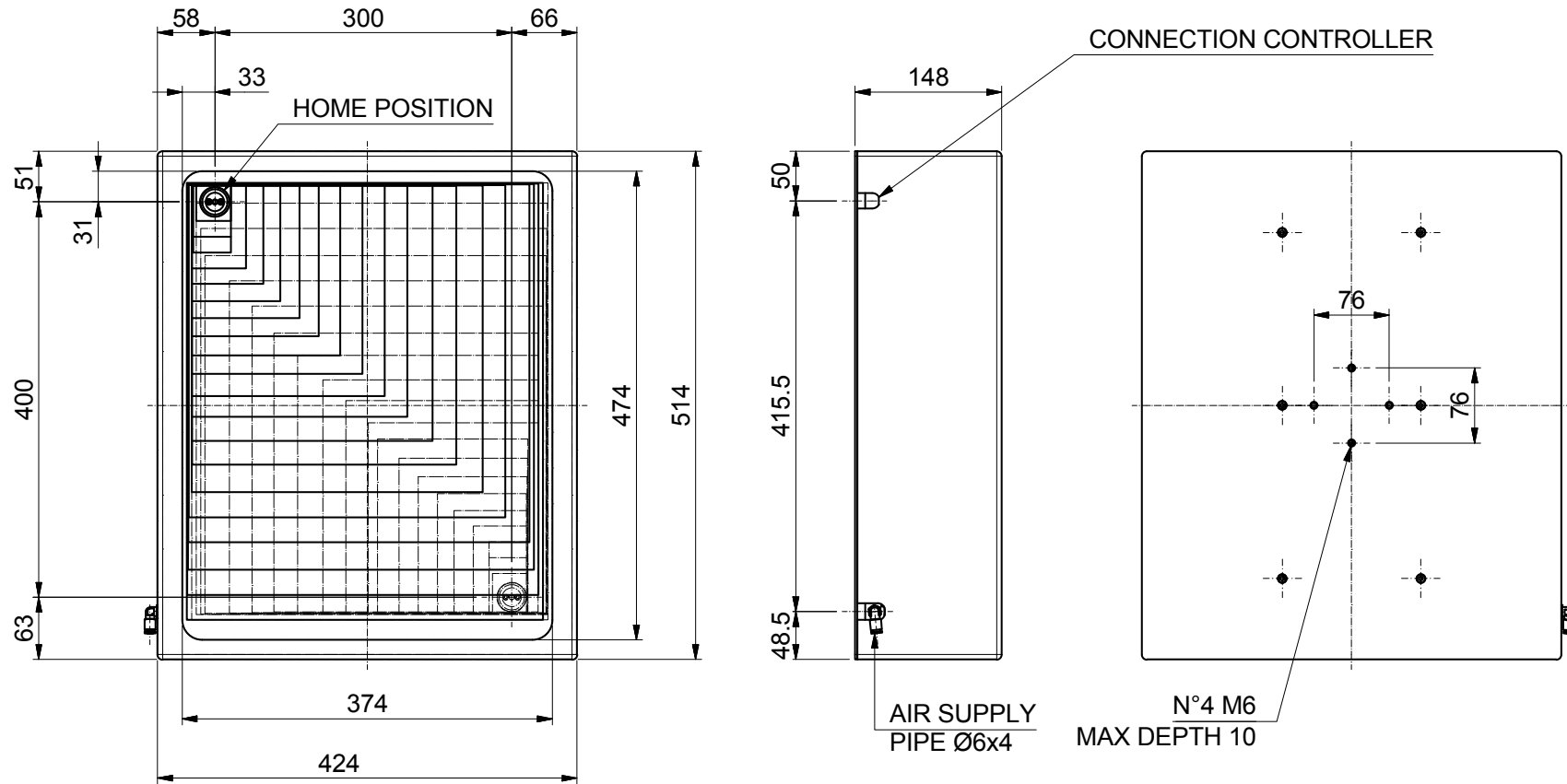


ADP120160DEEP

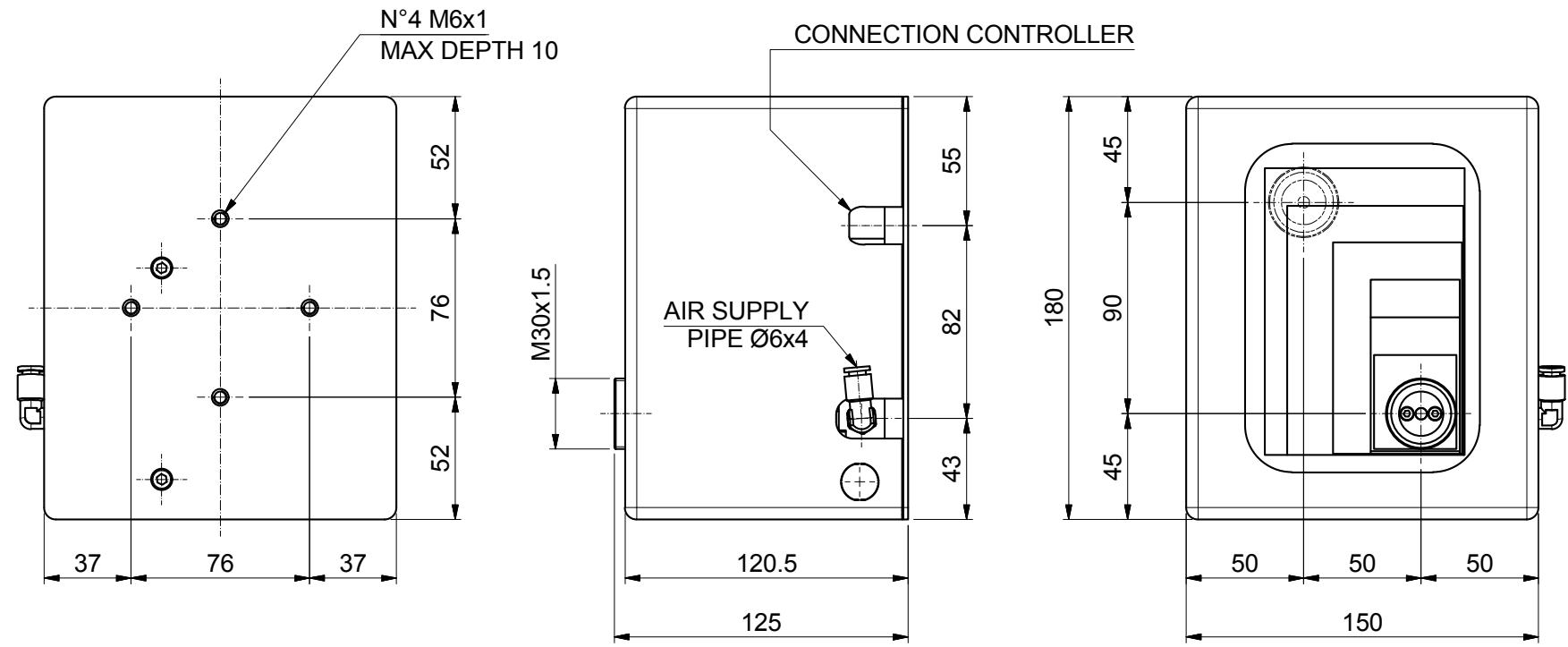
# Drawings



SCALE (1:5)



SCALE (1:10)



SCALE 1:5

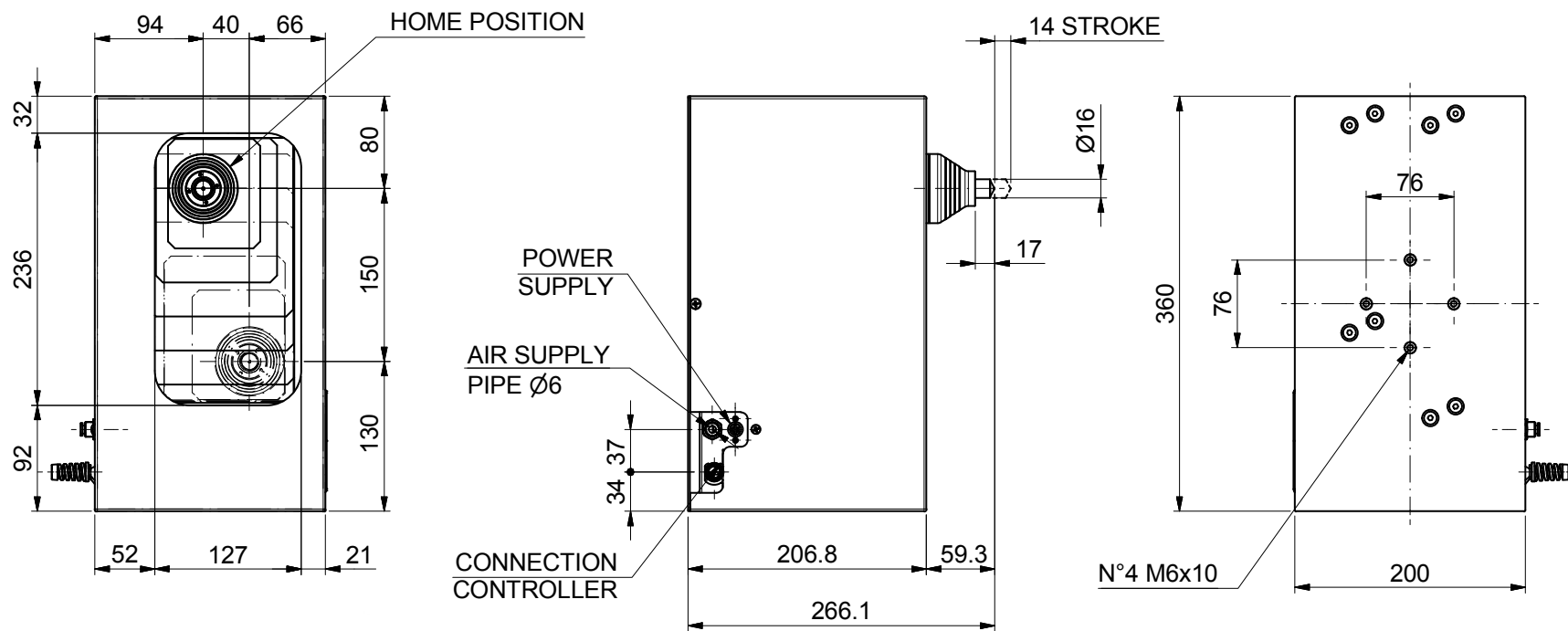


Your Global Marking Partner since 1940

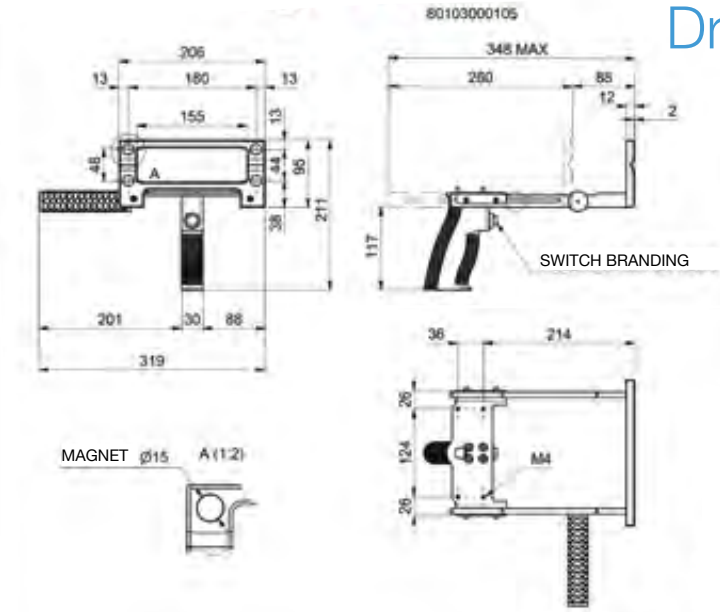
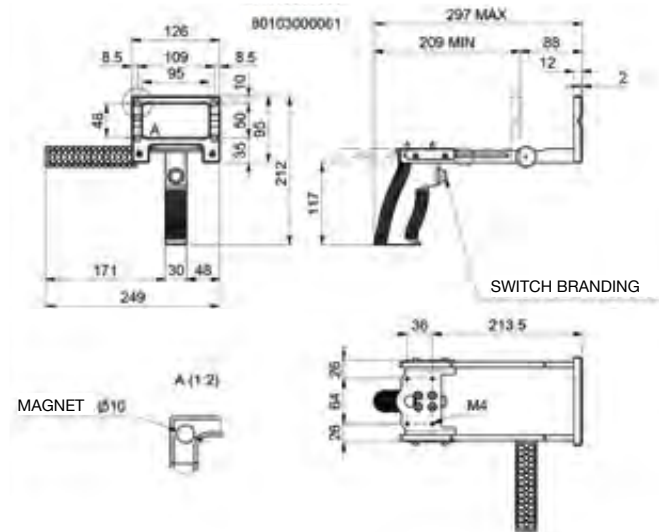


ASM40150

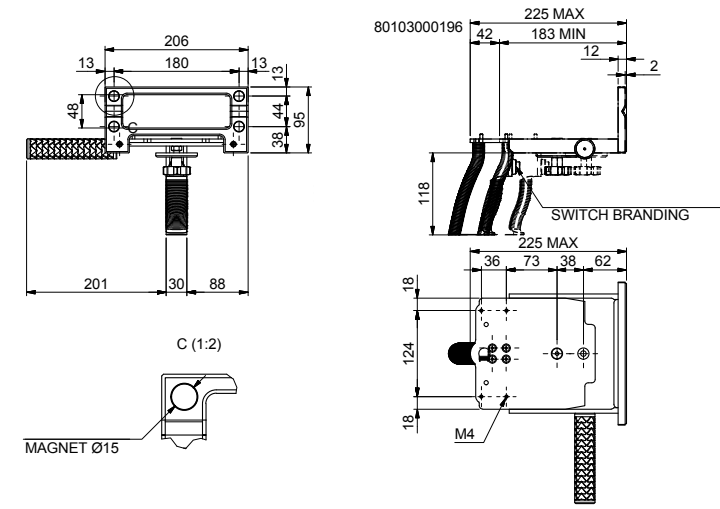
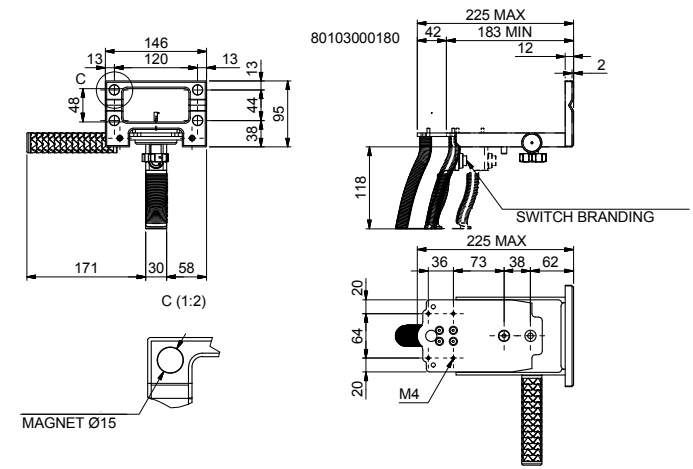
# Drawings



**HENDHELD**

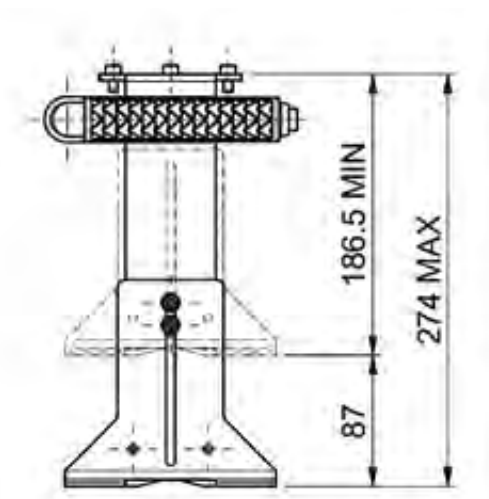


**CONVERTIBLE KIT HANDHELD**

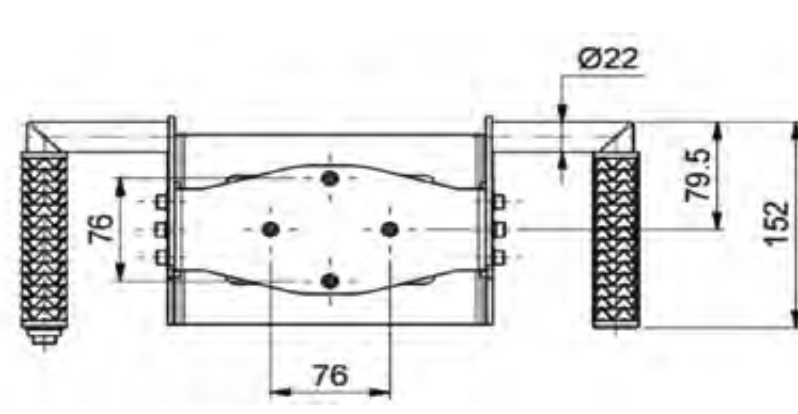
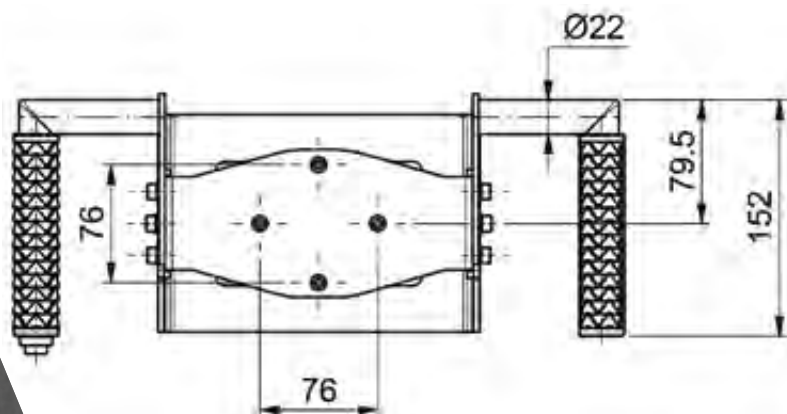
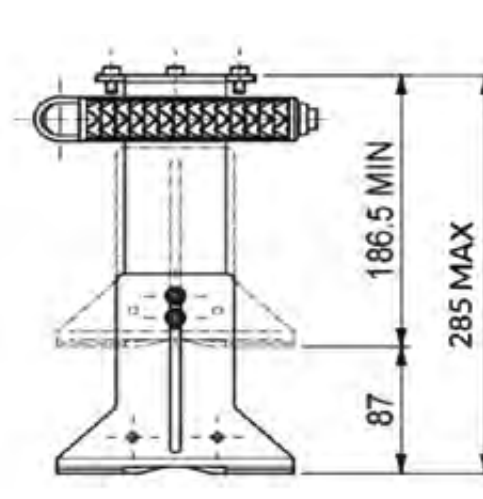


**TWO HANDS HANDHELD**

ADP5090



ADP120160



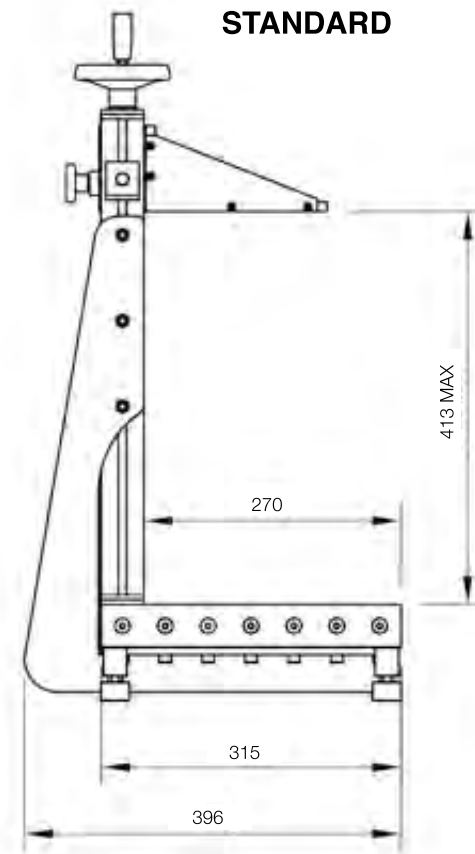
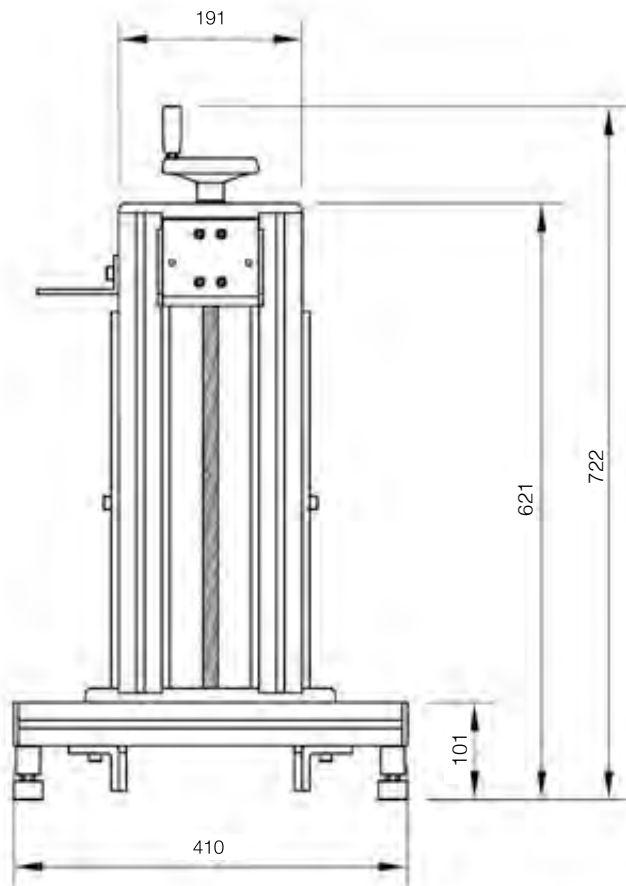




# ADP2560 - ADP25120 - ADP5090 - ADP120160

## Drawings

**Standard benchtop kit - 800 mm and 1000 mm optional heights available**

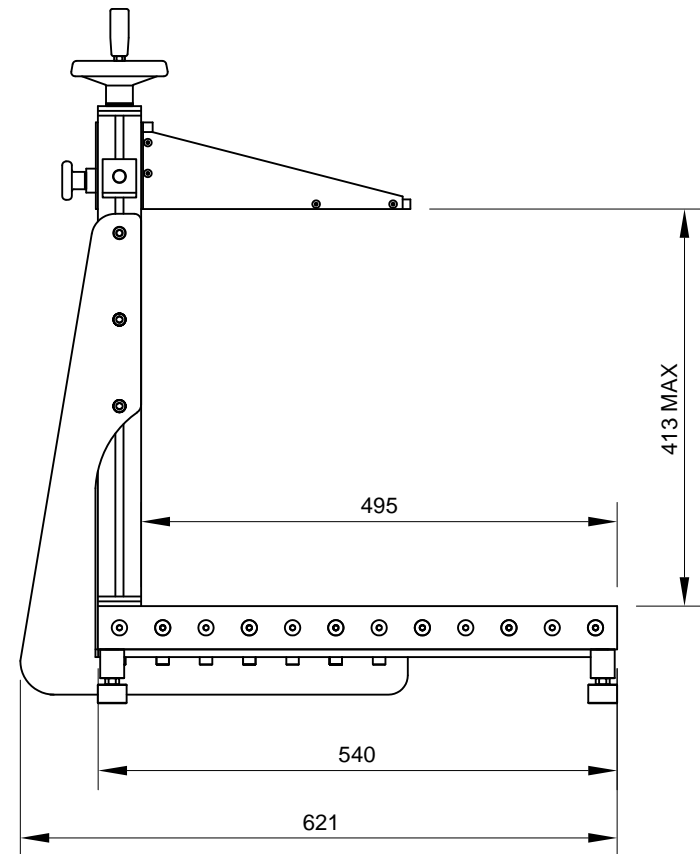
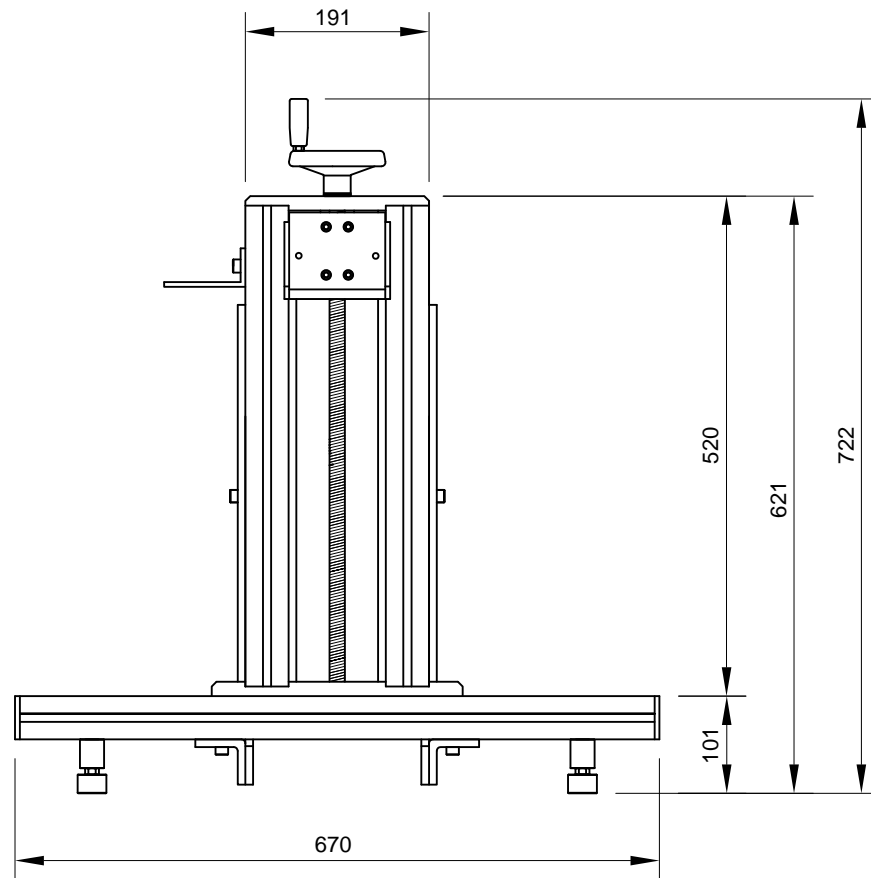




ADP300400

# Drawings

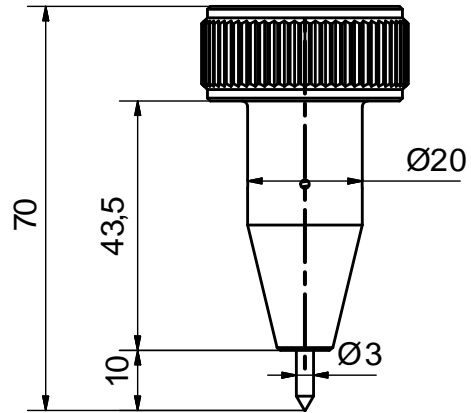
Standard benchtop kit - 800 mm and 1000 mm optional heights available



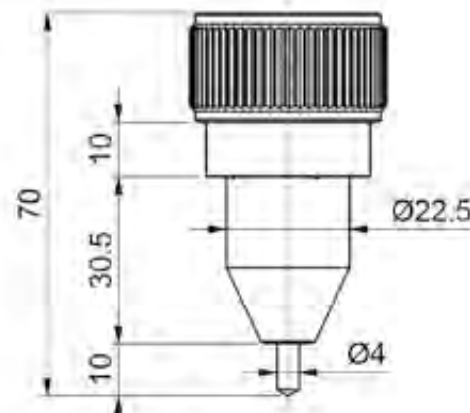


# Drawings

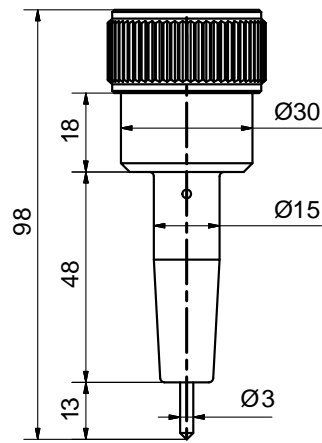
## PINS



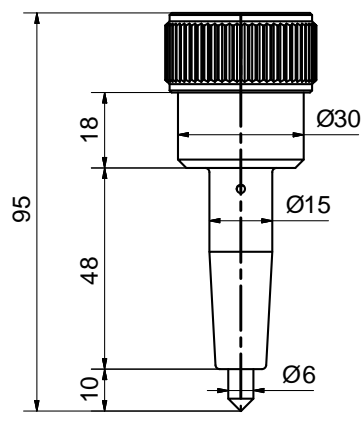
3 mm vibro



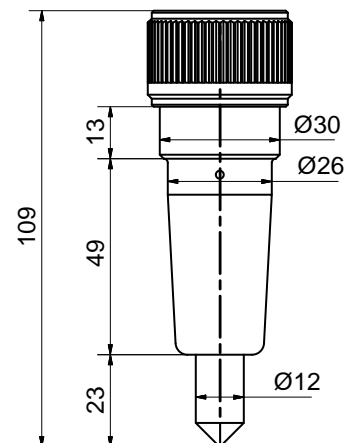
4 mm vibro



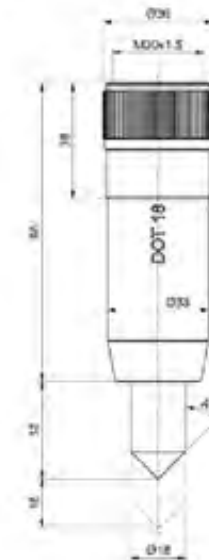
3 mm dot



6 mm dot

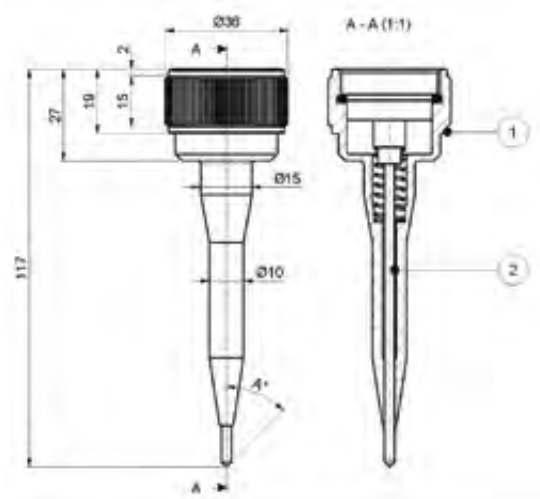


12 mm dot

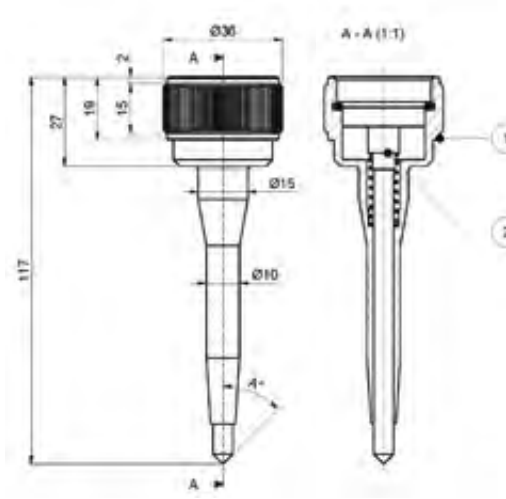


18 mm dot

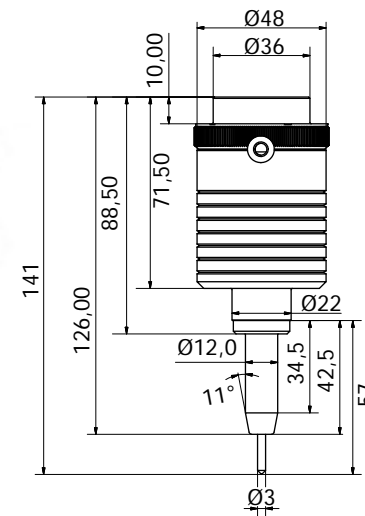
# Drawings



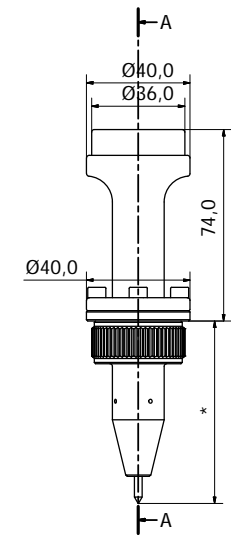
3mm XL dot



6 mm XL dot



3 mm electro



Vibro dot extension



## DOT PEEN MARKERS COMPARISON

FEATURES	ADP 2560	ADP25120	ADP5090	ADP120160	120160 DEEP	ADP300400	SCRIBE ASM6090	SCRIBE 40150
MARKING AREA	25X60 MM	25X120 MM	50X90 MM	120X160 MM	120X160 MM	300X4000 MM	60x90 MM	40X150 MM
CONTROLLER	AC500 - AC250	AC500 - AC250	AC500 - AC250	AC500 - AC250	AC500 - AC250	AC500 - AC250	AC500	AC500
PORTABLE	YES	YES	YES	YES	CONSULT THE COMPANY	NO	CONSULT THE COMPANY	CONSULT THE COMPANY
BENCHTOP	YES	YES	YES	YES	YES	YES	YES	YES
INTEGRATION	YES	YES	YES	YES	YES	YES	YES	YES
DOT PIN								
3 MM	X	X	X	X		X		
3XL MM	X	X	X	X		X		
6 MM	X	X	X	X		X		
6XL MM	X	X	X	X		X		
12 MM	X	X	X	X	X	X		
18 MM	X	X	X	X	X	X		
VIBRO PIN								
3 MM	X	X	X	X		X		
4 MM	X	X	X	X		X		
ELECTRIC PIN								
3 MM	X	X	X	X		X		
SCRIBE PIN								
16 MM								X
4 MM							X	
NOISE	MODERATE	MODERATE	MODERATE	MODERATE	MODERATE	MODERATE	VERY LOW	VERY LOW
COMPUTER-HOST INTERFACE	YES (RS232-ETH)	YES (RS232-ETH)	YES (RS232-ETH)	YES (RS232-ETH)	YES (RS232-ETH)	YES (RS232-ETH)	YES (RS232-ETH)	YES (RS232-ETH)
COMPUTER REQUIRED	NO	NO	NO	NO	NO	NO	NO	NO
SPEED	OVER 5 CAR/SEC	OVER 5 CAR/SEC	OVER 5 CAR/SEC	OVER 5 CAR/SEC	OVER 5 CAR/SEC	OVER 5 CAR/SEC	OVER 3 CAR/SEC	OVER 3 CAR/SEC

FEATURES	ADP 2560	ADP25120	ADP5090	ADP120160	120160 DEEP	ADP300400	SCRIBE ASM6090	SCRIBE 40150
TYPES MAXIMUM HEIGHT	25 MM	25 MM	50 MM	120 MM	120 MM	300 MM	60 MM	100 MM
SOFTWARED DRIVEN Z AXIS	YES	YES	YES	YES	CONSULT THE COMPANY	CONSULT THE COMPANY	NO	NO
NUMBER OF PINS	1	1	1	1	1	1	1	1
LINES	YES	YES	YES	YES	YES	YES	YES	YES
ARCS	YES	YES	YES	YES	YES	YES	YES	YES
TYPES IN CONTINUOUS	YES	YES	YES	YES	YES	YES	YES	YES
LOGOS	YES	YES	YES	YES	YES	YES	YES	YES
QR CODES, BAR CODES AND DATAMATRIX	YES	YES	YES	YES	YES	YES	YES	YES
SERIES	YES	YES	YES	YES	YES	YES	YES	YES
DATE CODES	YES	YES	YES	YES	YES	YES	YES	YES
IRREGULAR SURFACES	OVER 10 MM	OVER 10 MM	OVER 10 MM	OVER 10 MM	OVER 7 MM	OVER10 MM	OVER 7 MM	OVER 7 MM
CIRCUMFERENCES	CONSULT THE COMPANY	CONSULT THE COMPANY	YES	YES	YES	YES	NO	NO
N° OF FONTS	3	3	3	3	3	3	3	3
FONT FROM THE CUSTOMER	YES	YES	YES	YES	YES	YES	YES	YES
RESOLUTION	OVER700 PX/CM	OVER 700 PX/CM	OVER700 PX/CM	OVER 700 PX/CM	OVER 700 PX/CM	OVER 700 PX/CM	IN CONTINUOUS	IN CONTINUOUS
POWER	100-240 VAC 50- 60 HZ	100-240 VAC 50- 60 HZ	100-240 VAC 50- 60 HZ	100-240 VAC 50- 60 HZ	100-240 VAC 50- 60 HZ	100-240 VAC 50- 60 HZ	100-240 VAC 50- 60 HZ	100-240 VAC 50- 60 HZ
AIR SUPPLY	1-7 BARS	1-7 BARS	1-7 BARS	1-7 BARS	1-10 BARS	1-7 BARS	1-7 BARS	1-7 BARS



Automator is certified CISQ, the consortium for IT Software Quality



Automator Group believes in rational energy use as input in the design of its marking systems



Automator Group believes in rational energy use as input in the design of its marking systems



Automator Group believes that all its machinery must be designed and produced according to the concept of "green philosophy"



Automator is certified ISO 9001 IQ Net

# THE BIGGEST MARKING FAMILY IN THE WORLD



**Automator America Inc** - Chillicothe, Ohio, USA  
(740) 983 0157

info.us@automator.com - automator.com/am



**Automator Ibermark SI** - La Garriga, Spain  
(+34) 938 717 095

ventas@automator.com - automator.com/es



翱慕 **Automator Trading (Shanghai) co. Ltd** - Shanghai, P.R. China  
(+86) 158 0174 3707

info.cn@automator.com - automator.com/cn



**Automator India** - Faridabad, India  
(+91) 129 414 2297

info.in@automator.com - automator.com/in



**OOO Automator** - Moscow, Russian Federation  
(+7) 495 921 03 09

mail.ru@automator.com - automator.com/ru



**Automator Turkey** - Istanbul, Turkey

info.tr@automator.com - automator.com/tr



**Automator Thailand** - 117/51-52 Moo 18, Klongnueng,  
Klonglung Pathumthani 12120 Thailand  
Jantima Channara -Kae- (+662) 529 5641-2



**Automator Mexico** - Santa María Insurgentes, México  
(+55) 6726 3343

info.mx@automator.com - automator.com/es



**Traçamatrix** - Graveson, France  
(+33) 490 950 897

info@tracamatrix.com - tracamatrix.com



**Stadlers Corp FZC** - Al Qusais, Dubai, UAE 1F, No.7, Alley 23, Lane  
85, Sec. 3, Muzha Rd., Wenshan District, 116, +971 (4) 238 2844  
fax +9714 2382855 info@stadlerscorp.com www.stadlerscorp.com



**Traceability Solutions**, Automator Div.  
Johannesburg, South Africa - (+27) 78 27 382  
info.za@automator.com - automator.com/za



**Automator International Srl** - Corsico, Italia  
(+39) 02 48 601 445

marketing@automator.com - automator.com/it



**Automator Asia Pacific** - Nunawading Vic., Australia  
(+61) 03 9894 8916

salesap@automator.com - automator.com/aus



**Automator CEE s.r.o.** - Prague, Czech Republic  
(+42) 0273132590

info.cz@automator.com - automator.com/cz



**Automator Poland** - Swidnica, Poland  
(+48) 695 663 457

info.pl@automator.com - automator.com/pl



**Automator d.o.o.** - Lesce, Slovenia  
(+386) 5 90 33 782

info.si@automator.com - automator.com/si



**Automator Andina S.A.S** - Medellin-Antioquia, Colombia  
+57 (4) 2359012

info.andina@automator.com - automator.com/an



**OOO Automator** - Poltava, Ukraine  
(+38) 0532 59 80 68

info.ua@automator.com - automator.com/ua



**Mach Ftd** - Bucharest, Romania  
(+40) 214 609 840

mach@mach.ro - mach.ro



**Oy Suomen EDM Ab** - Porvoo, Finland  
(+358) 19 5211400

info.sf@automator.com - automator.com/sf



**Toyo Corporation** - Aichi Ken, Japan  
(+81) 566 232 030  
ity1002@toyo-tos.com - toyo-tos.co.jp



**Automator Brandone** - Watford, Great Britain  
(+44) 208 863 7141

info.uk@automator.com - automator.com/uk



**Automator OOD** - Pazardzhik, Bulgaria  
(+359) 893 558 655

info.bg@automator.com - automator.com/bg



**Torvala Maskinkomponenter** - Handen C Sweden  
Tel. (+46) 08 52294600

info@torvallamaskin.se



**Automator s.r.o.** - Stara Tura, Slovakia  
(+421) 915 708 066

info.sk@automator.com - automator.com/sk



**Automator Suisse** - Stabio, Switzerland  
(+41) 091 647 15 90

info.ch@automator.com - automator.com/ch



**Automator Korea**  
Gyeonggi-do, South Korea

info.kr@automator.com - automator.com



**Automator Iran** - Tehran, Iran  
(+98) 212 2571258

info.ir@automator.com



**Arnold Trading Co. Ltd.** - Industrial Area Holon 58810, Israel  
(+972) 355 813 13

info@arnold.co.il - arnold.co.il



**MF Flues Ind. Com. Ltda** - Sao Paulo, Brazil  
(+55)-11 55 147 400

flues@flues.com.br - flues.com/br



**Smartec Gaging Instruments Co. Ltd** - Wenshan District, taipei 116 Taiwan  
Tel: (+886) 2 2234 4396  
Info.th@automator.com



**Novograv** - Weilerbach, Germany  
(+49) 06374 4027  
info.de@automator.com - automator.com



[www.automator.com](http://www.automator.com)