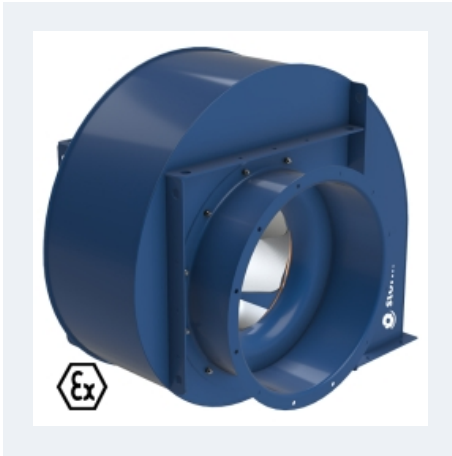


PREXTUR ATEX



MEDIUM PRESSURE FAN, BACKWARD IMPELER, DIRECT DRIVEN WITH FLANGED MOTOR ATEX

MANUFACTURING FEATURES:

- Medium pressure centrifugal fan with direct coupling.
- Reinforced housing made of carbon laminated steel, protected against corrosion by powder coating polyester resin RAL 5010. Finish C3.
- Self-cleaning turbine and reinforced impeller with high-performance backward (reaction) blades made of carbon laminated steel dynamically balanced to minimize noise and vibrations. Black painting RAL 9005
- ATEX standard asynchronous motor. ATEX certified according to the zone. Class F insulation. Manufactured with standard voltages: 230/400V 50Hz in three phase motors up to 4kW and 400/690V 50Hz for higher powers.
- Motor with flange (B5), airtight axle
- Double suction flange
- Available in the following guidelines (to be indicated in case of order, the code refers to LG): LG and RD.
- Working temperature: ambient from -20°C to 40°C, transported air according to the ATEX classification.

APPLICATIONS

- Ventilation in indoor environments classified as ATEX. Suitable for moving clean or dusty air. Designed to be fixed in the double suction flange, with the motor in vertical position.

- Paint booths
- Collection of dust
- Food industry dryers
- Food processing
- Incineration
- Odor control in industry
- Indoor / outdoor pollution control
- Big buildings
- Malls
- Factories / Industrial buildings
- Warehouses
- Extraction of smoke
- Boilers and ovens
- Manufacture and treatment of chemical products.
- Tunnels, underground stations.

ON DEMAND

- Fans for 60Hz and special voltages.
- Inox 304 (normal or electropolished finish)
- Inox 316 (normal or electropolished finish)
- Inspection door to facilitate maintenance and cleaning

Accessories



AB



AC



AVR



AVS



BA-400



BADS
ATEX



BIDS
ATEX



EIS



INT
ATEX



JE 45



RA



RIS



SFC

Technical data

Three-phase motor / 2 poles

Code	Model	R.P.M.	Rated I. A 400V	Rated power kW	Max. Airflow m ³ /h	Sound db (A)**	Weight kg	Connect. diagram
PX314290XN	PREXTUR 314 T2 1,5kW ATEX	2850	3,95	1,50	5.510	60	69,50	1
PX3542100XN	PREXTUR 354 T2 3kW ATEX	2900	7,3	3,00	7.880	64	107,50	1
PX4042132XN	PREXTUR 404 T2 5,5kW ATEX	2910	11,46	5,50	11.270	67	147	1

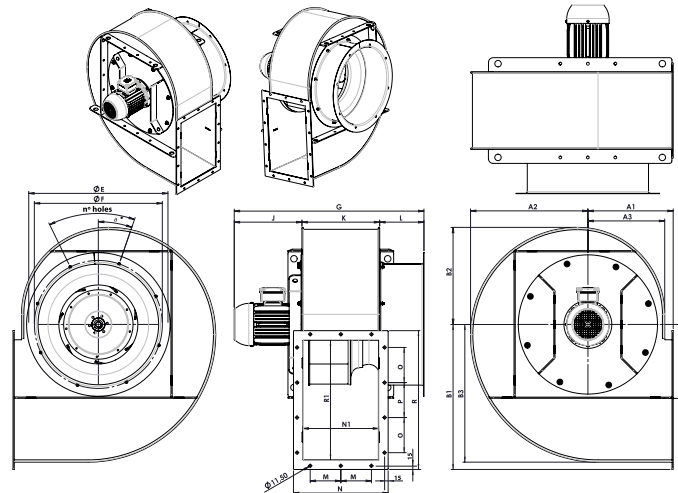
Three-phase motor / 4 poles

Code	Model	R.P.M.	Rated I. A 400V	Rated power kW	Max. Airflow m ³ /h	Sound db (A)**	Weight kg	Connect. diagram
PX314471XN	PREXTUR 314 T4 0,37kW ATEX	1410	1,2	0,37	2.760	45	52,20	1
PX354471XN	PREXTUR 354 T4 0,37kW ATEX	1410	1,2	0,37	3.940	49	75,20	1
PX404480XN	PREXTUR 404 T4 0,55kW ATEX	1430	1,75	0,55	5.640	52	88	1
PX454490XN	PREXTUR 454 T4 1,1kW ATEX	1420	3,3	1,10	8.020	56	112	1
PX5044100XN	PREXTUR 504 T4 2,2kW ATEX	1440	5,8	2,20	11.010	59	146	1
PX5644100XN	PREXTUR 564 T4 3kW ATEX	1420	6,8	3,00	15.460	63	166	1
PX6344132XN	PREXTUR 634 T4 5,5kW ATEX	1455	11,5	5,50	22.010	66	247	1
PX7144160XN	PREXTUR 714 T4 11kW ATEX	1460	20,9	11,00	31.500	70	355	1

Notes:

** Total sound pressure level at the point of maximum flow measured in dB(A) in the suction measured in free field at a distance of 6m from the source

Dimensions



Model	A1	A2	A3	B1	B2	B3	D	E	F
PREXTUR 314 T2 1,5kW ATEX	241.3	312.6	205.8	396.5	259.2	366	199	377	355
PREXTUR 314 T4 0,37kW ATEX	241.3	312.6	205.8	396.5	259.2	366	199	377	355
PREXTUR 354 T2 3kW ATEX	266.2	351.1	230.7	441.8	290.9	411.3	224.3	418	395
PREXTUR 354 T4 0,37kW ATEX	266.2	351.1	230.7	441.8	290.9	411.3	224.3	418	395
PREXTUR 404 T2 5,5kW ATEX	294.3	394.6	258.8	493	326.7	462.5	253	464	438
PREXTUR 404 T4 0,55kW ATEX	294.3	394.6	258.8	493	326.7	462.5	253	464	438
PREXTUR 454 T4 1,1kW ATEX	325.4	442.5	289.9	549.3	366.2	518.8	284.3	523	485
PREXTUR 504 T4 2,2kW ATEX	356.6	490.7	321.1	606	405.9	575.5	316	582	535
PREXTUR 564 T4 3kW ATEX	394	548.5	358.5	674	453.5	643.5	354	650	608
PREXTUR 634 T4 5,5kW ATEX	437.6	615.9	402.1	753.3	509	722.8	398.3	710	675
PREXTUR 714 T4 11kW ATEX	487.5	692.8	452	843.7	572.4	813.2	448.7	826	755

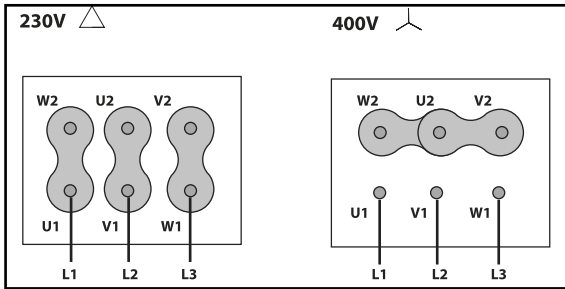
Model	G	J	K	L	M	N	N1	O	P
PREXTUR 314 T2 1,5kW ATEX	693	278	230	185	91	301	221	90	95
PREXTUR 314 T4 0,37kW ATEX	633.5	218.5	230	185	91	301	221	90	95
PREXTUR 354 T2 3kW ATEX	758.6	314.6	259	185	105	330	250	105	105
PREXTUR 354 T4 0,37kW ATEX	662.5	218.5	259	185	105	330	250	105	105
PREXTUR 404 T2 5,5kW ATEX	758.6	314.6	290	185	121	361	281	120	120
PREXTUR 404 T4 0,55kW ATEX	709.5	234.5	290	185	121	361	281	120	120
PREXTUR 454 T4 1,1kW ATEX	788	278	325	185	128	396	316	130	130
PREXTUR 504 T4 2,2kW ATEX	860.6	314.6	361	185	146	432	352	147	146
PREXTUR 564 T4 3kW ATEX	902.6	314.6	474	185	167	474	394	165	170
PREXTUR 634 T4 5,5kW ATEX	1045.3	408.3	452	185	192	523	443	190	190
PREXTUR 714 T4 11kW ATEX	1225.15	531.15	509	185	210	580	500	210	210

Model	R	R1	a°	n°holes
PREXTUR 314 T2 1,5kW ATEX	395	315	22,5°	8x45°
PREXTUR 314 T4 0,37kW ATEX	395	315	22,5°	8x45°
PREXTUR 354 T2 3kW ATEX	435	355	22,5°	8x45°
PREXTUR 354 T4 0,37kW ATEX	435	355	22,5°	8x45°
PREXTUR 404 T2 5,5kW ATEX	480	400	22,5°	8x45°
PREXTUR 404 T4 0,55kW ATEX	480	400	22,5°	8x45°
PREXTUR 454 T4 1,1kW ATEX	530	450	22,5°	8x45°
PREXTUR 504 T4 2,2kW ATEX	580	500	19°	8x45°
PREXTUR 564 T4 3kW ATEX	640	560	11,25°	16x22,5°
PREXTUR 634 T4 5,5kW ATEX	710	630	11,25°	16x22,5°
PREXTUR 714 T4 11kW ATEX	790	710	11,25°	16x22,5°

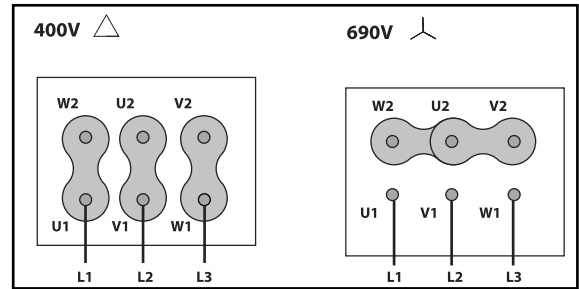
Wiring diagram

Wiring diagram N° 1

230/400V



400/690V



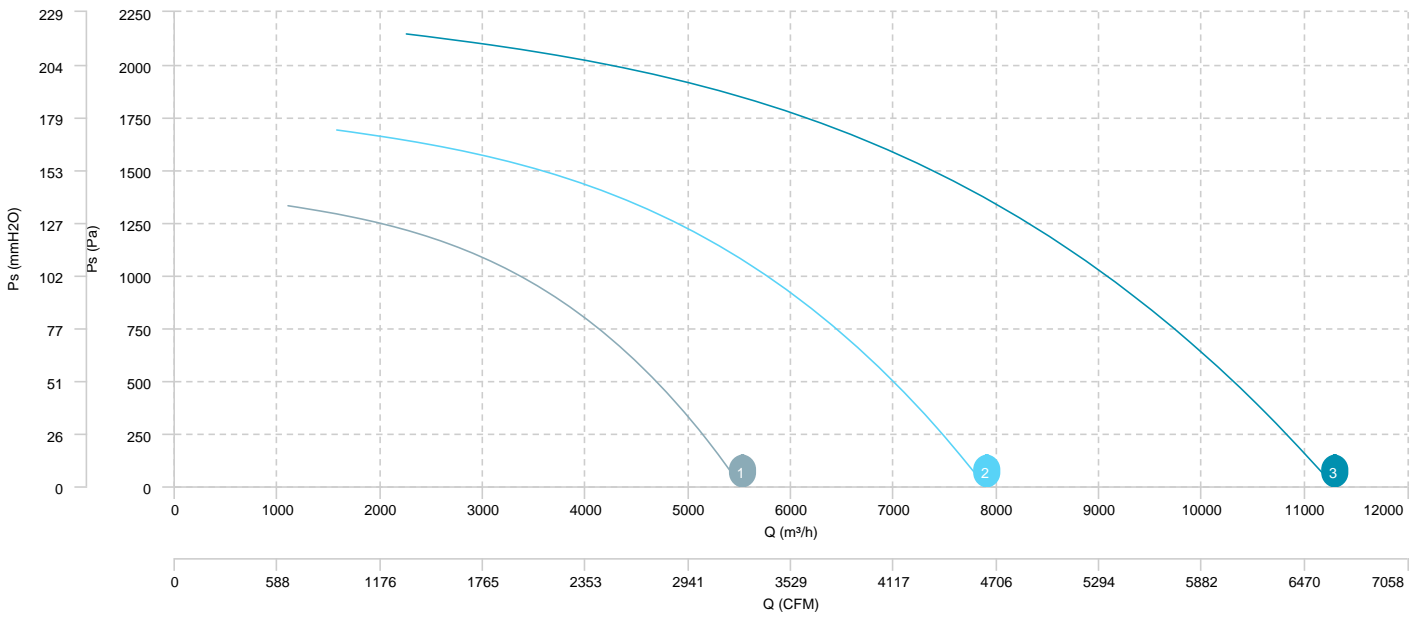
CHARACTERISTIC CURVE

1 PREXTUR 314 T2 1,5kW
ATEX

2 PREXTUR 354 T2 3kW
ATEX

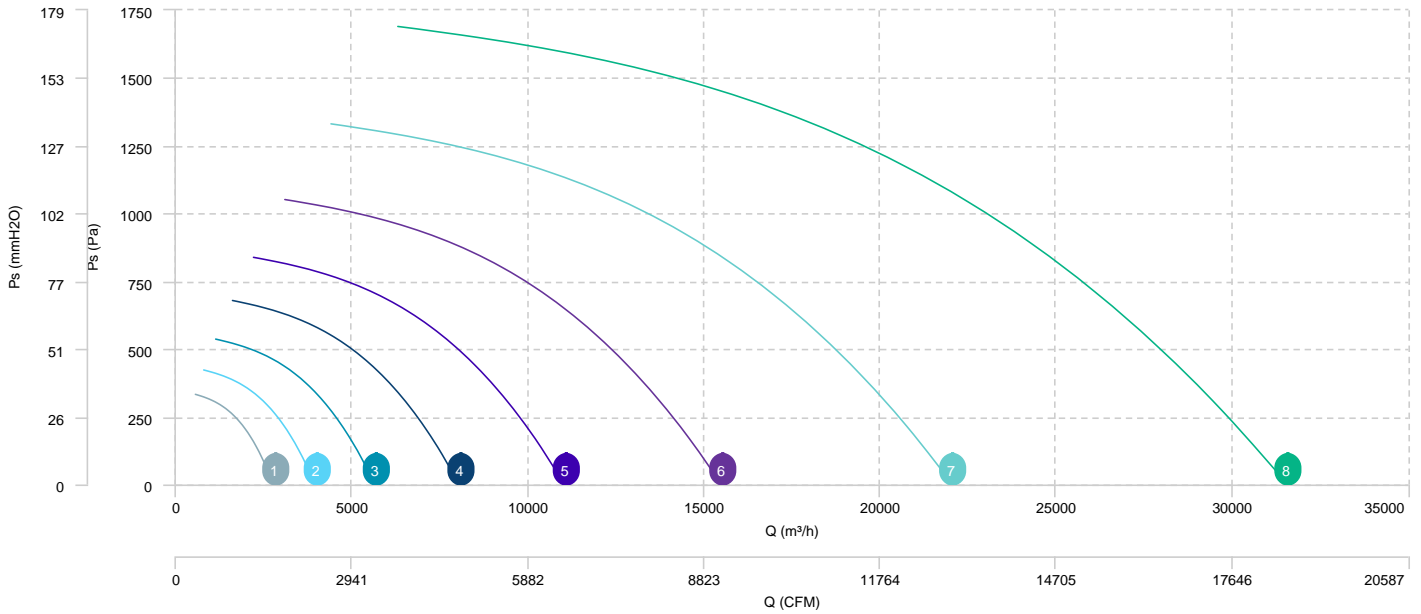
3 PREXTUR 404 T2 5,5kW
ATEX

AIR FLOW - PRESSURE



1	PREXTUR 314 T4 0,37kW ATEX	2	PREXTUR 354 T4 0,37kW ATEX	3	PREXTUR 404 T4 0,55kW ATEX	4	PREXTUR 454 T4 1,1kW ATEX
5	PREXTUR 504 T4 2,2kW ATEX	6	PREXTUR 564 T4 3kW ATEX	7	PREXTUR 634 T4 5,5kW ATEX	8	PREXTUR 714 T4 11kW ATEX

AIR FLOW - PRESSURE



Sound data

Sound / 2 poles

Sound power Lw dB (A)										
Model		63 Hz	125 Hz	250 Hz	500 Hz	1000 Hz	2000 Hz	4000 Hz	8000 Hz	Total
PREXTUR 314 T2 1,5kW ATEX	Inlet	82	80	77	75	73	70	67	64	86
PREXTUR 354 T2 3kW ATEX	Inlet	86	84	81	79	77	74	71	68	90
PREXTUR 404 T2 5,5kW ATEX	Inlet	89	87	84	82	80	77	74	71	93

Sound / 4 poles

Sound power Lw dB (A)										
Model		63 Hz	125 Hz	250 Hz	500 Hz	1000 Hz	2000 Hz	4000 Hz	8000 Hz	Total
PREXTUR 314 T4 0,37kW ATEX	Inlet	67	65	62	60	58	55	52	49	71
PREXTUR 354 T4 0,37kW ATEX	Inlet	71	69	66	64	62	59	56	53	75
PREXTUR 404 T4 0,55kW ATEX	Inlet	74	72	69	67	65	62	59	56	78
PREXTUR 454 T4 1,1kW ATEX	Inlet	78	76	73	71	69	66	63	60	82
PREXTUR 504 T4 2,2kW ATEX	Inlet	81	79	76	74	72	69	66	63	85
PREXTUR 564 T4 3kW ATEX	Inlet	85	83	80	78	76	73	70	67	89
PREXTUR 634 T4 5,5kW ATEX	Inlet	88	86	83	81	79	76	73	70	92
PREXTUR 714 T4 11kW ATEX	Inlet	92	90	87	85	83	80	77	74	96